

# Health Sciences Academy Newsletter

Bringing together research, innovation and clinical practice

COVID-19 Edition  
Volume 2



HSE Mid West  
Community Healthcare



The COVID-19 crisis has meant that we have to work in a different way, and the challenges we have to overcome are enormous. But it has presented a remarkable opportunity for us to work and think differently.

This newsletter is our update to you on the extraordinary collaborations that have been developed between University of Limerick, UL Hospitals Group and the Mid West Community Healthcare Organisation over the past month.

## Opening of UL Hospitals Group Intermediate Care Facility

The UL Hospitals Group, Intermediate Care Facility is officially open to support our acute hospital system. The fully equipped and staffed facility provides care for patients who are fit for discharge from the acute hospital setting but who would benefit from further rehabilitation or who may be waiting to go into long term care. At the Intermediate Care Facility, patients will have access to a multi-disciplinary team with significant input from allied health professionals including occupational therapists, physiotherapists, speech and language therapists, medical social workers and dietitians.

Along with our allied health professionals, highly experienced teams of nurses, doctors, and support staff from the acute hospitals in UL Hospitals Group will staff the facility.

In addition, the facility will support the learning of medical, nursing and allied health students from the University of Limerick. <https://twitter.com/ULHospitals>



**RTE News** @rteneews · 8 Jun  
A 68-bed field hospital has been established at the University of Limerick Sport Arena, to free up bed capacity at the region's overcrowded acute hospital during the Covid-19 crisis. | Read: [bit.ly/3ffFRRN](https://bit.ly/3ffFRRN)



**UL HOSPITALS GROUP  
INTERMEDIATE CARE FACILITY**



## Virtual Education & Training in CERC

Social distancing guidelines have a direct impact on the number of staff who can attend CERC in person for education and training. The move to a virtual education world is well underway, as the HSA Manager and CERC Manager led out a project to understand teaching needs, and explore potential solutions. With input from the various teaching arranging demo sessions on various applications and expert IT and Teaching input from UL colleagues. Cisco Webex is supported by the HSE and has options to host meetings, training sessions and conferences. This is an exciting time with opportunities to embrace virtual teaching and strengthen the educational offering in the Mid-West.

## National Institute of Health Sciences Bulletin

The National Institute of Health Sciences (NIHS) started in 2000. Based in St Camillus' Hospital, it collates and supports clinical staff involved in research to publish their research findings through the NIHS Bulletin. As the Health Sciences Academy continues to develop, in line with one of its key strategic objectives of bringing research closer to clinical staff, the NIHS Bulletin is now available through the HSA website: [Click here](#). We look forward to working with Aidan Hickey and Catherine Kelly of NIHS to develop this aspect further.

## CUPID COVID-19 Research

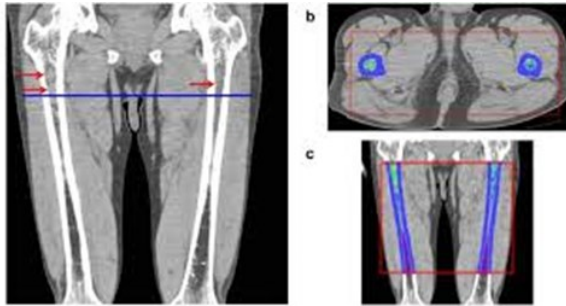
### Emergency Department attendance by paediatrics patients during COVID

This research project aims to assess the impact of COVID-19 ON Paediatric Emergency Healthcare Utilisation, to understand how the health seeking behaviour of parents may have altered during the pandemic, and to identify how any barriers to accessing care can be removed. Find out more: <https://hrbopenresearch.org/articles/3-37/v1>

### Machine Learning & Multiple Myeloma

Following on from the 'mix & mingle' event hosted by the Health Sciences Academy in January, a research project has started with Dr Niamh Keane, Consultant Haematologist, Dr Pat Kiely, Consultant Radiologist and Dr Pepijn Van der Ven, Senior Lecturer in Artificial Intelligence & Machine Learning in University of Limerick. The project: "Application of Machine Learning to improve detection of bone abnormalities requiring treatment in Multiple Myeloma patients" aims to explore if machine learning can detect lesions in patients with multiple myeloma.

It is a really exciting step on the road to strengthening collaborations and exploring new ways to treat and care for patients.



### Further Study in UL

If you are interested in developing your expertise and career further, UL offer a range of Master programmes designed to allow those working clinically to study on a part time (or full time) basis. For further details please go to:

[www.ul.ie/gps](http://www.ul.ie/gps)

Courses include:

- MSc Nursing
- MSc Health Professions Education
- Grad Cert in Advanced Clinical Practice
- MSc Advanced Healthcare Practice
- MSc Public Health

### RAPID: Rapid Advanced Production Responses to Frozen Supply Chains in Hospitals

The COVID-19 pandemic can disrupt and threaten supply chains around the world. When this happens in healthcare, it can cost lives. The RAPID project at the Confirm SFI Research Centre for Smart Manufacturing at the University of Limerick will overcome blocked or frozen supply chains in healthcare. Confirm's mission is to transform the manufacturing landscape through excellent research into smart manufacturing technologies, education and outreach programmes. [Discover more....](#)

### Continuous Professional Development (CPD) at HSA

One of the key themes for the HSA is 'Equality & Inclusion', and within this, is the area of continual professional development (CPD). The Health Sciences Academy is delighted to announce the 'CPD @ HSA' platform which aim to support opportunities for continual professional development for staff across the Hospital Group and CHO Area 3. Programmes at the University of Limerick Learning & Development Department, through the HSA, are now available to staff in the UL Hospitals Group and CHO3 areas. There are ambitious plans to grow and develop this platform, so do feel free to get in touch if you have any suggestions.

Researcher Skills		
Title	Date	For Whom
Building Research Capacity	Thu, 11 Jun 2020	Academics Researchers
Professional Development		
Title	Date	For Whom
Freedom of Information Training	Tue, 23 Jun 2020	All Staff
PhD Supervision	Tue, 16 Jun 2020	Academics Researchers
Leadership and Management Skills		
Title	Date	For Whom
Interviewer Skills Training	Tue, 07 Jul 2020	All Staff



For latest news and updates on current projects, please visit our website: [www.HealthSciencesAcademy.ie](http://www.HealthSciencesAcademy.ie)

or contact Miriam McCarthy, Health Sciences Academy Manager: 087 6362733

\* [miriam.mccarthy1@hse.ie](mailto:miriam.mccarthy1@hse.ie) \* [miriam.mccarthy@ul.ie](mailto:miriam.mccarthy@ul.ie)