

Vice President Academic Affairs & Student Engagement

**Director (Eamonn Moran)
PA/Administrator, Susan Niven**

Specialised Supports

Student Welfare

Student Development

**Access Areas Manager
(Position Vacant)**

**Arts Office
Patricia Moriarty**

**Student Health Centre
Claire Kearns**

**Community Liaison Office
Gabriella Hanrahan**

**Disability Support Services
Brenda Shinners-Kennedy**

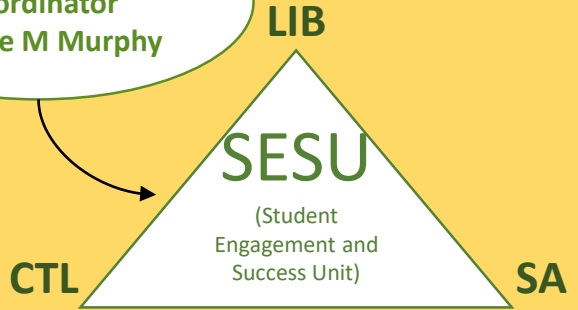
**Socio-Economically Disadvantaged
Deirdre O'Connor**

**Chaplaincy
John Campion**

**First Year Support Coordinator
Deirdre M Murphy**

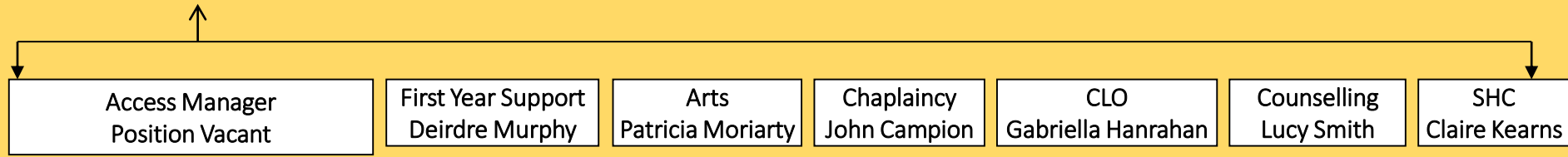
**Mature Student
Rhona McCormack**

**Counselling
Dr Lucy Smith**



Director
Eamonn Moran

← PA/Administrator
Susan Niven



Sarah O'Rourke
Chaplain

Arlene Loughnane

Marion Kinsella

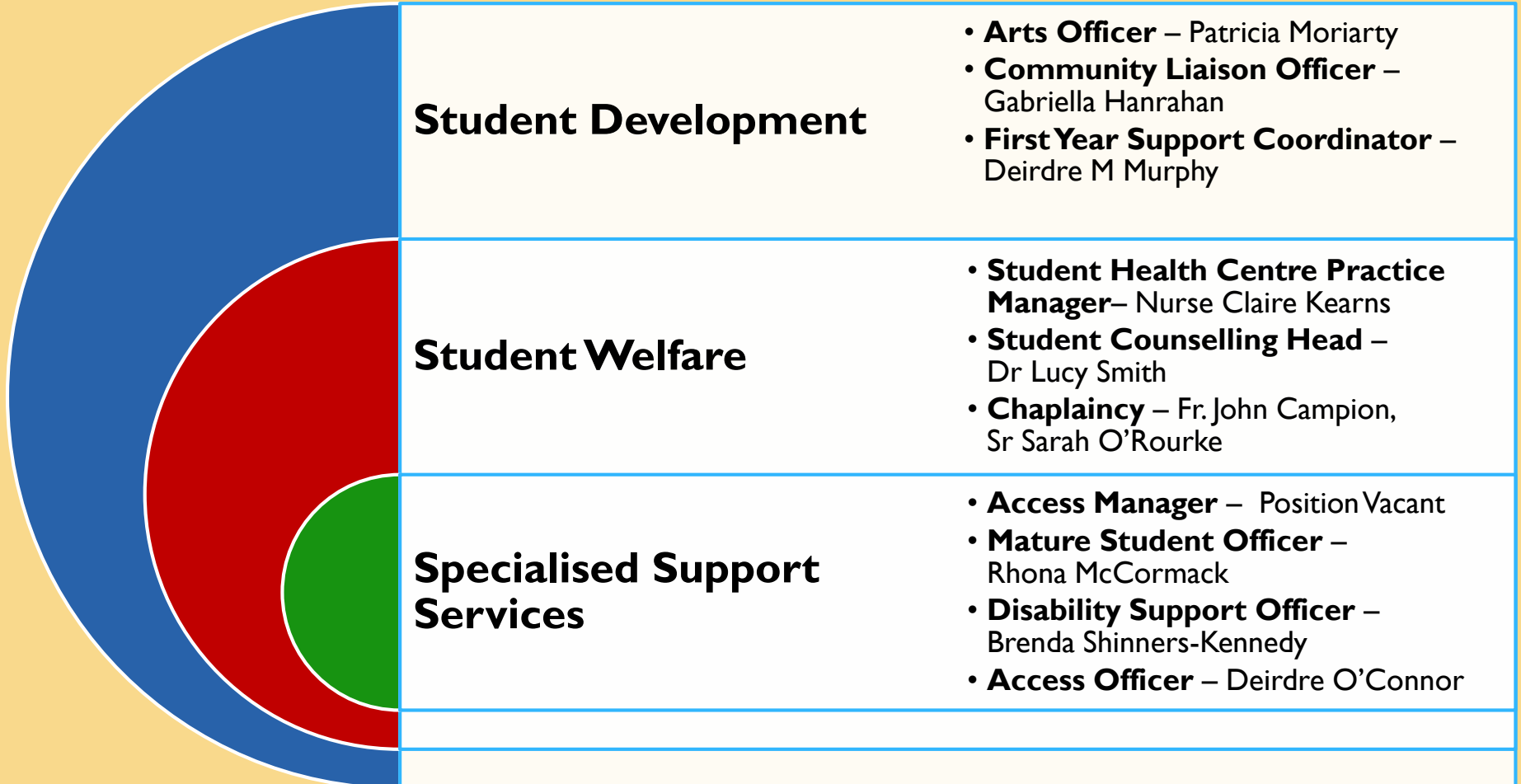
Ria Toland

5 Counsellors

3 Assistant
Psychologist

Additionally
 5 Tutors on the 13-week Access Programme
 15 Part-Time Tutors on the Mature Student Access Programme
 2 Doctors in the Student Health Centre
 1 Physiotherapist
 Others include:
 Coop student in CLO
 Trainee Psychotherapists
 Interns [Students on the MA Psychotherapy]

Director – Eamonn Moran
 PA/Administrator – Susan Niven



Access Office



- Initiatives aimed at students from Socio-economically Disadvantaged background in Primary and Secondary Schools



Pre-Entry

- School visits
- Shadowing Days
- Parent Meetings
- HEAR Scheme
- 13 Week Access Programme
- Aspiration-raising Events for Primary and Secondary School children to consider UL
- Homework Club, Out of School Tuition
- Community Initiatives – UL/LED Access Campus
- Destination College



Post-Entry

- Orientation Programme (Intensive 1 Week)
- Academic and Personal Advice and Support
- Funding – Administers Student Assistance Fund, Sources Private Funding, Financial Advice

Disability Support Services

Guidance & Support

- Career Guidance
- Disability Awareness Training
- Library Assistance
- Ongoing advice, information & support
- Provides Educational Learning Support

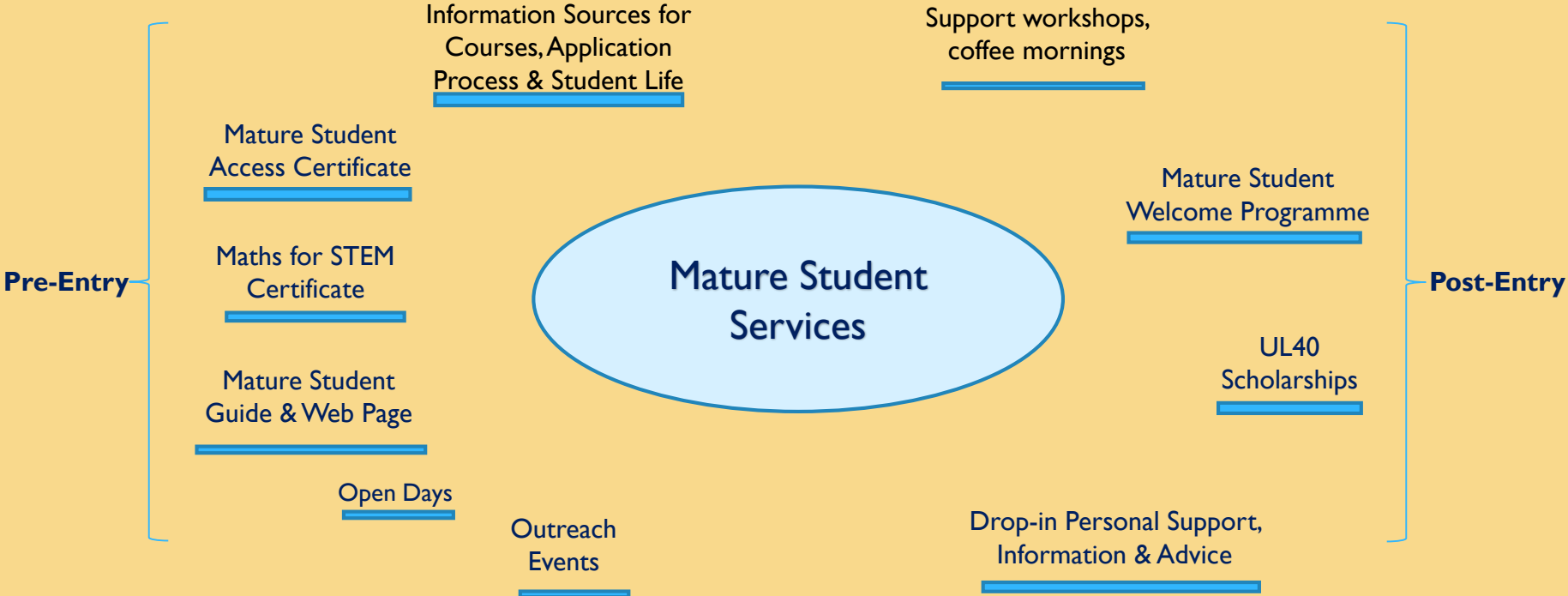
Support Program Management

- Administers ESF Funding
- Manages EATC – Educational Assistive Technology Centre (Part of the overall Shannon Consortium and HEA Compact)
- Manages CAO Supplementary Admissions System Process (DARE Scheme)

Advocacy

- Directs Disability Resource Area/Assistive Technology Service
- Students in wheelchairs, blind, partially sighted, dyslexia/dyspraxia/Asperger's syndrome, specific learning disabilities, serious physical and medical conditions
- Promotes & supports improved and equal access for students with disabilities
- Provides transport services

Mature Student Office



Mainstream Support Services Available to all Mature Students

- Careers Advisor for MS (CECD)
- Student Affairs Support Services
 - UL Learning Centres

Student Health Centre

Staff:

- 2 Doctors
- 1 Nurse
- 1 Physiotherapist
- 1 Administrator

General Medical Clinics

Dedicated Contraceptive Clinics

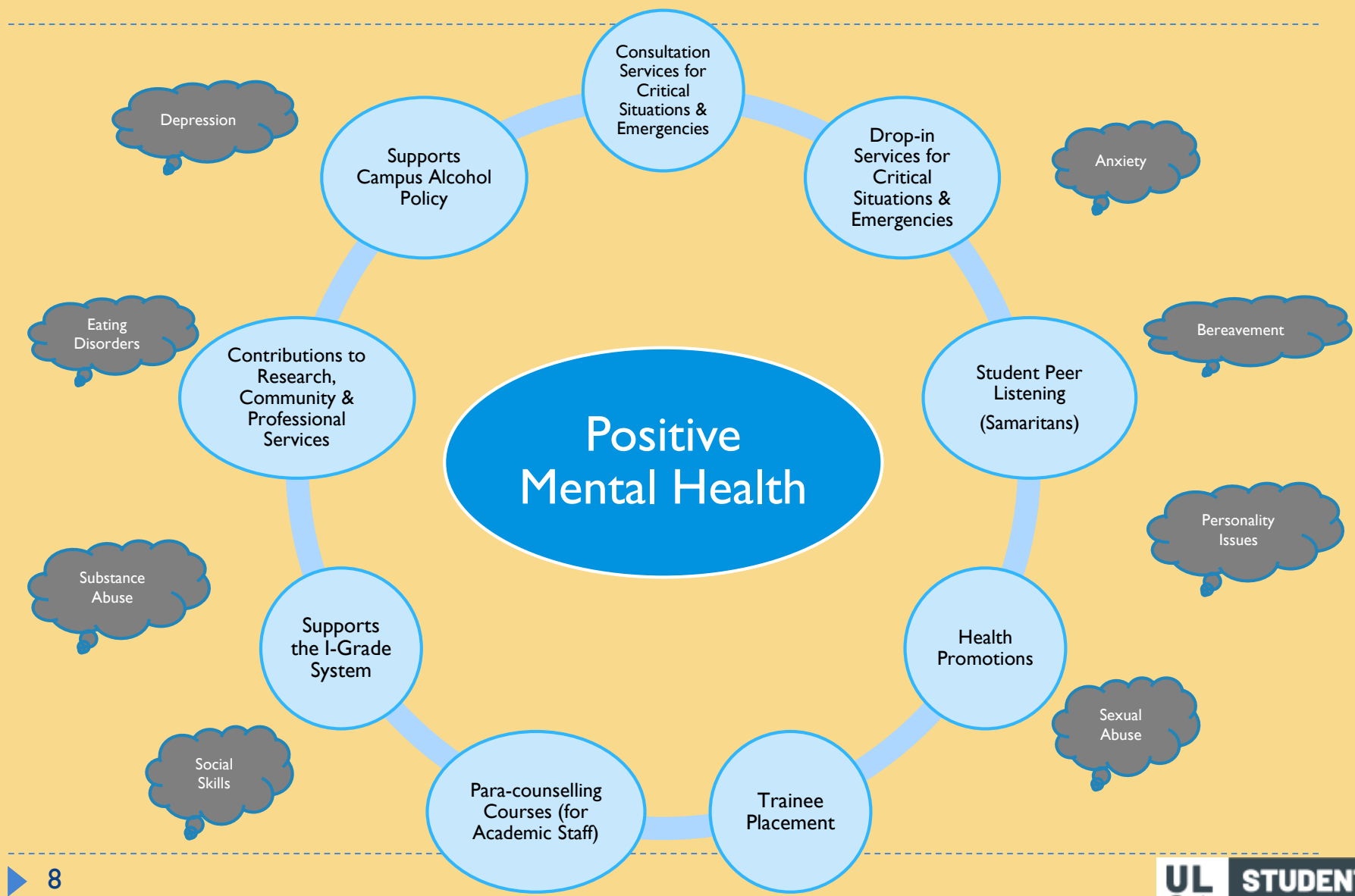
Student Sexual Health Clinics, including:

- STI Screening & Follow-up

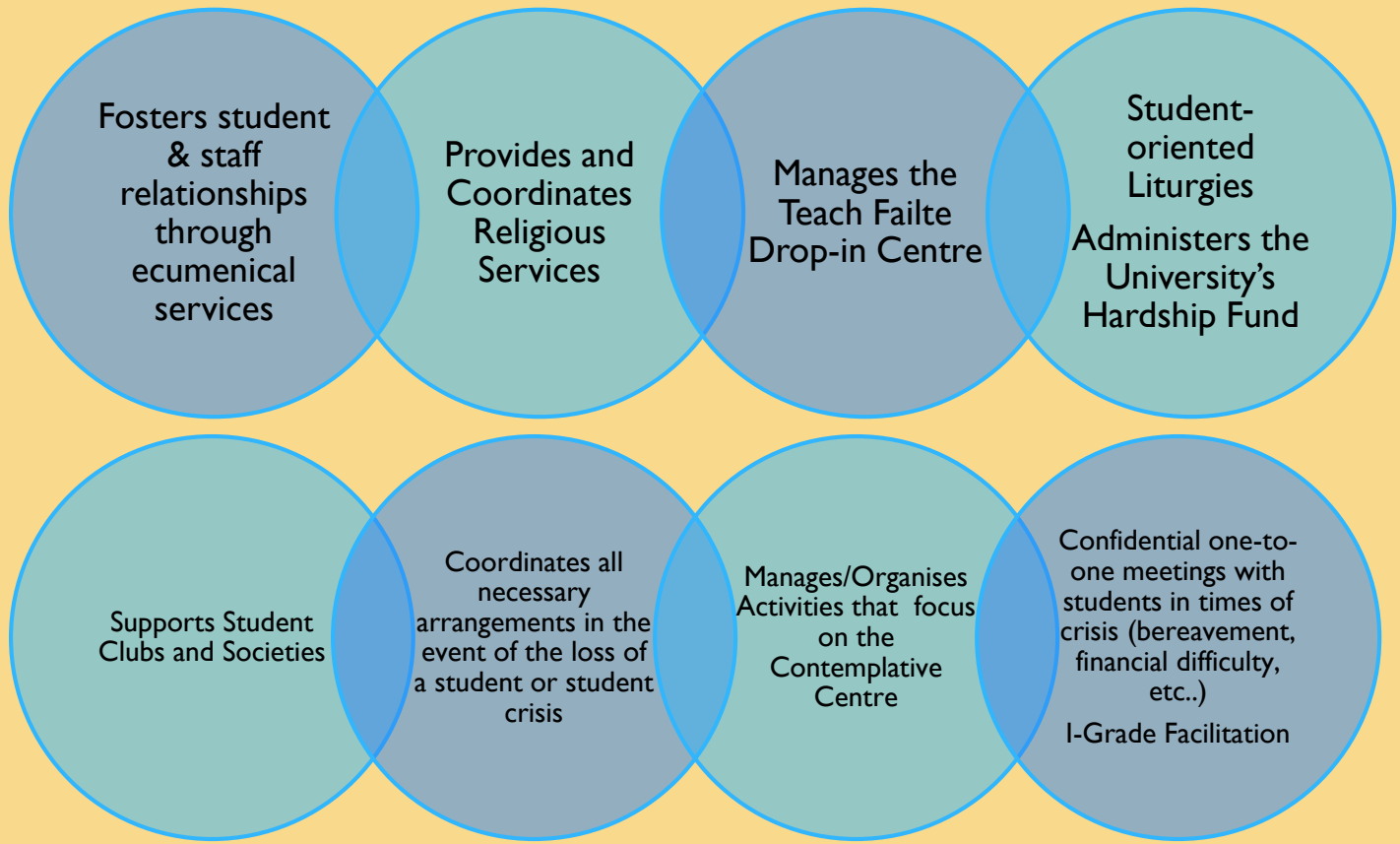
Support Role in other University Business:

- I-Grade Facilitation
- Policy and Health Promotion Initiatives
- Unexpected Outbreaks (e.g., mumps)

Student Counselling



Chaplaincy



Arts Office

Playing a key role in the vibrant artistic life of UL with a wide programme of cultural events.
Central to this programming is to;

- Challenge the perception of what art is
- Consider the role art can play in our day to day lives
- Embrace the restorative power of art
- Engage our community in meaningful experiences through e.g. music, literature, dance, performance
- Encourage interaction from the audience.
- Bringing the University's art collections to broader audiences through a series of curated exhibitions
- Working with communities both on and off campus

Publications

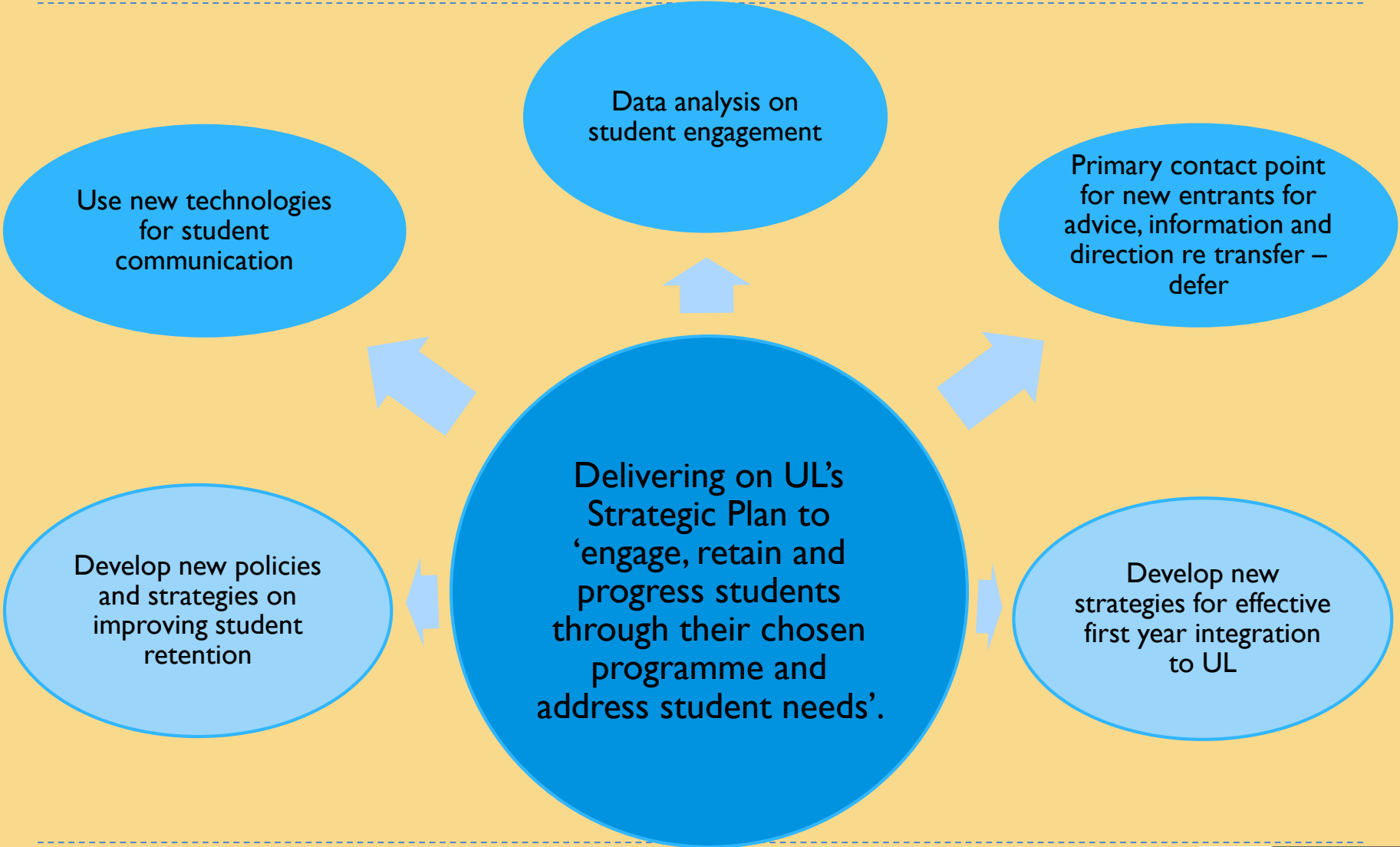
What Are We Like – a collection of writing by local creative writing groups and
Forty Tall Tales – a celebration of 40 years of UL through the medium of story.

Collaboration with faculty, staff and students is welcomed

Community Liaison Office



First Year Support Coordinator [SESU]



If you have any questions

Find us at

www.ul.ie/studentaffairs

or

Email us at

sa@ul.ie