



# MAIN BUILDING WAYFINDING MAP



UNIVERSITY of LIMERICK

OLLSCOIL LUIMNIGH

# Level G

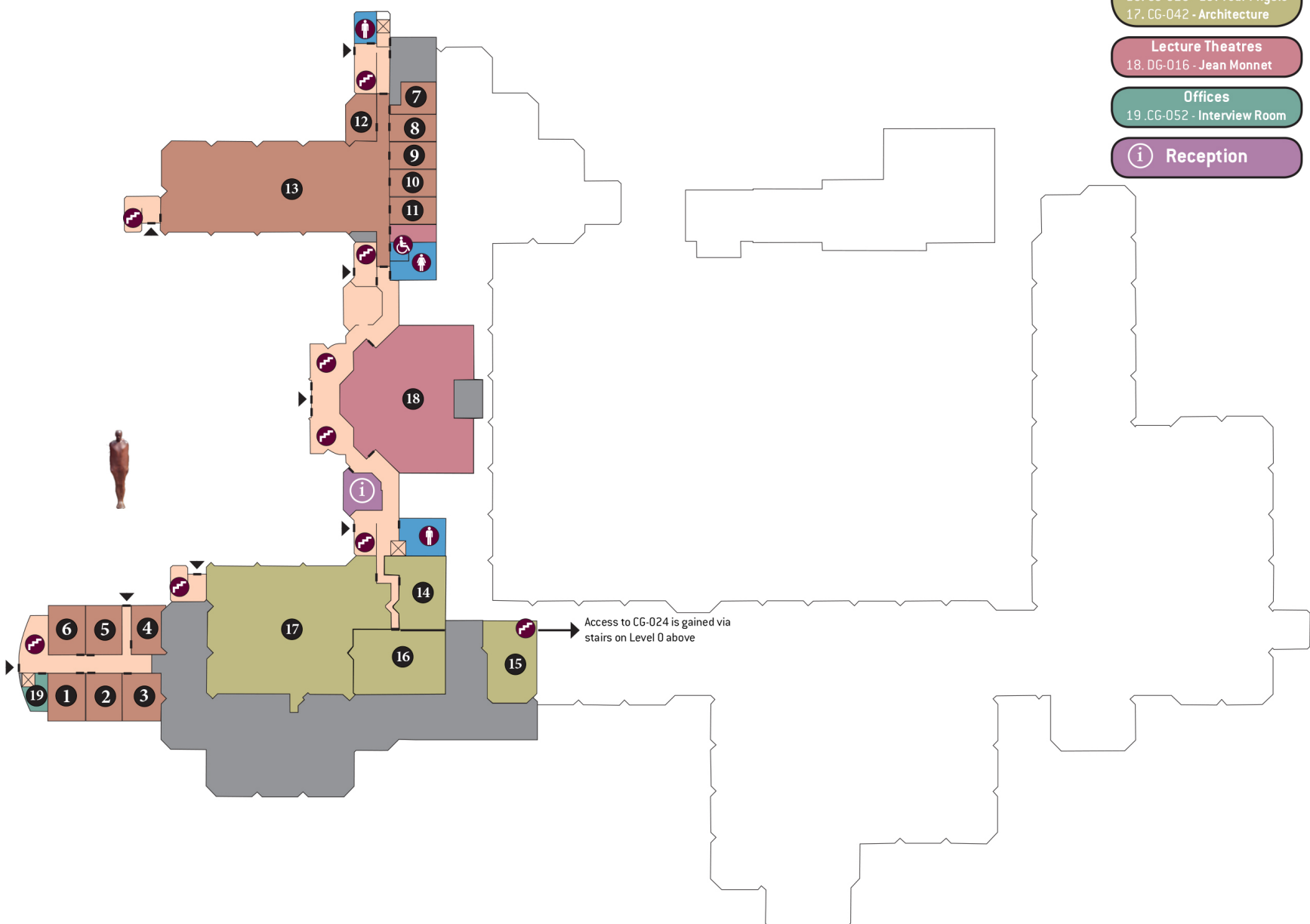
- Classrooms**
- |           |            |
|-----------|------------|
| 1. CG-053 | 8. EG-002  |
| 2. CG-054 | 9. EG-003  |
| 3. CG-055 | 10. EG-004 |
| 4. CG-057 | 11. EG-005 |
| 5. CG-058 | 12. EG-006 |
| 6. CG-059 | 13. EG-010 |
| 7. EG-001 |            |

- Labs**
- |                              |
|------------------------------|
| 14. CG-022 - Chemical Eng    |
| 15. CG-024 - Chemical Tech   |
| 16. CG-029 - 1st Year Physic |
| 17. CG-042 - Architecture    |

- Lecture Theatres**
- |                          |
|--------------------------|
| 18. DG-016 - Jean Monnet |
|--------------------------|

- Offices**
- |                             |
|-----------------------------|
| 19. CG-052 - Interview Room |
|-----------------------------|

- Reception**



# Level 0

## Classrooms

- 1. CO-078
- 2. CO-079

## Labs

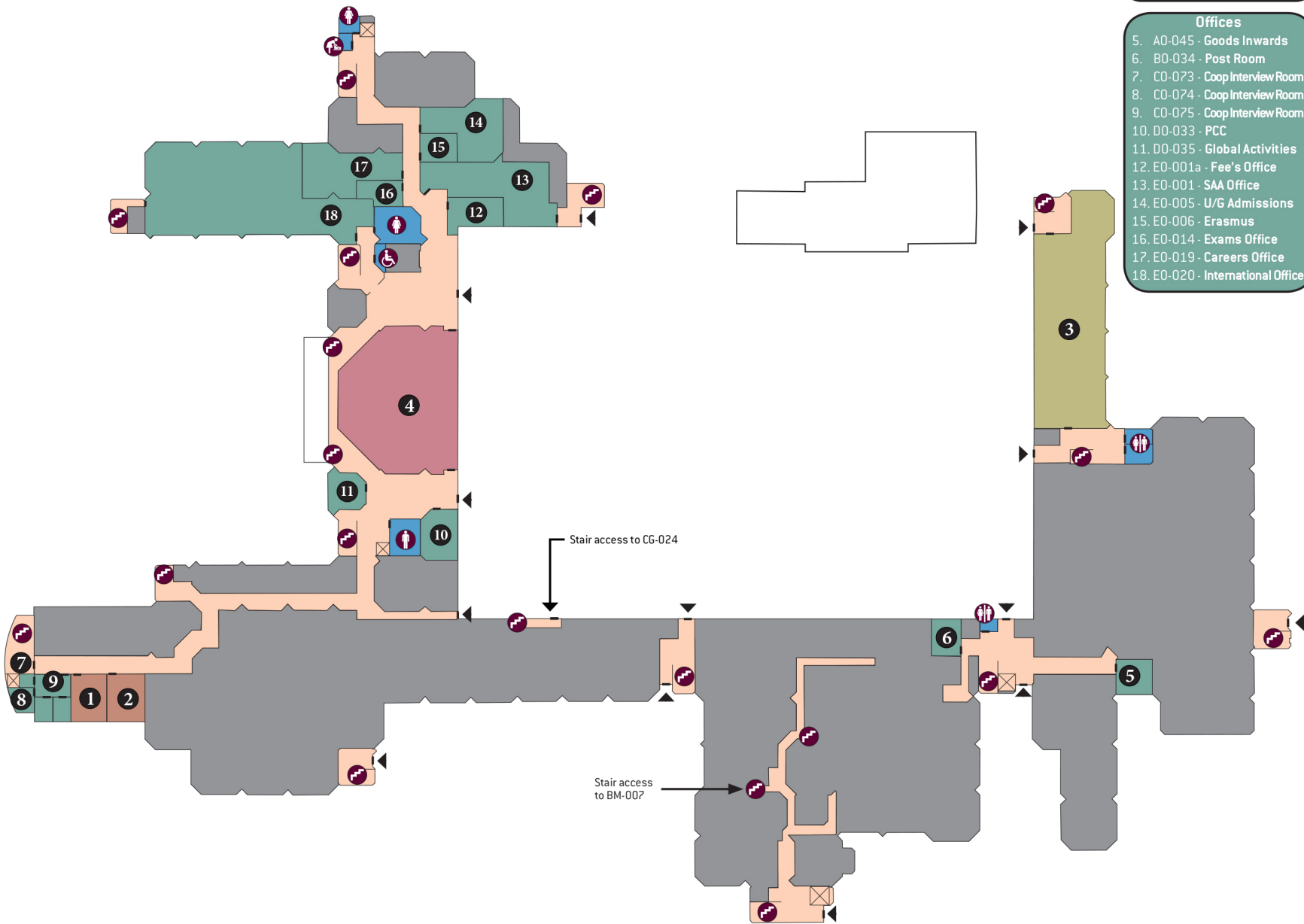
- 3. AO-060 (Venus Comp. Lab)

## Lecture Theatres

- 4. DG-016 - Jean Monnet

## Offices

- 5. AO-045 - Goods Inwards
- 6. BO-034 - Post Room
- 7. CO-073 - Coop Interview Room
- 8. CO-074 - Coop Interview Room
- 9. CO-075 - Coop Interview Room
- 10. D0-033 - PCC
- 11. D0-035 - Global Activities
- 12. E0-001a - Fee's Office
- 13. E0-001 - SAA Office
- 14. E0-005 - U/G Admissions
- 15. E0-006 - Erasmus
- 16. E0-014 - Exams Office
- 17. E0-019 - Careers Office
- 18. E0-020 - International Office



# Level M

## Classrooms

1. BM-007 - PBL Studio
2. BM-015 - Moot Courtroom
3. EM-009
4. EM-010

## Medical Services

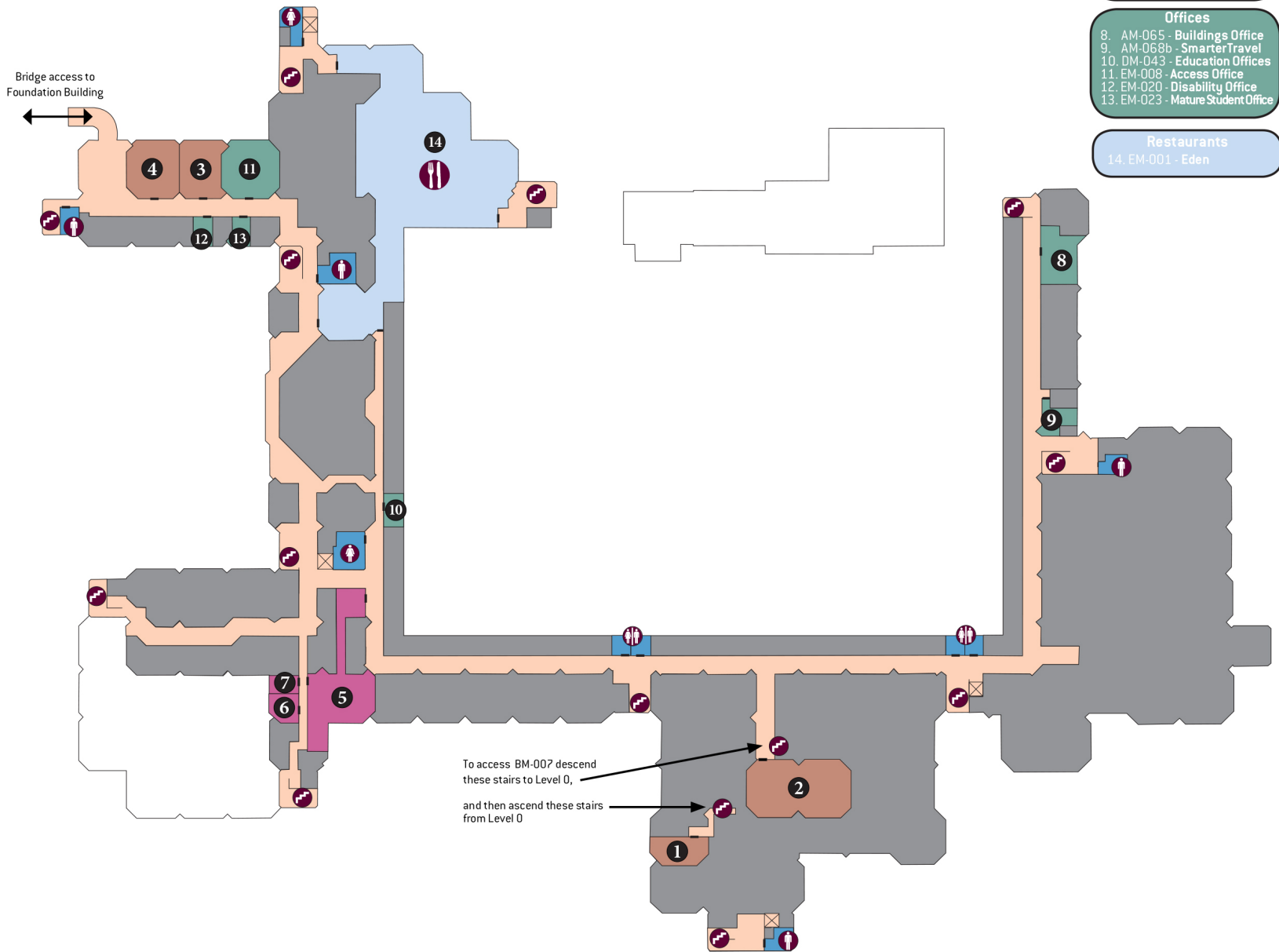
5. CM-061 - Medical Centre
6. CM-072 - Counselling
7. CM-073 - Counselling

## Offices

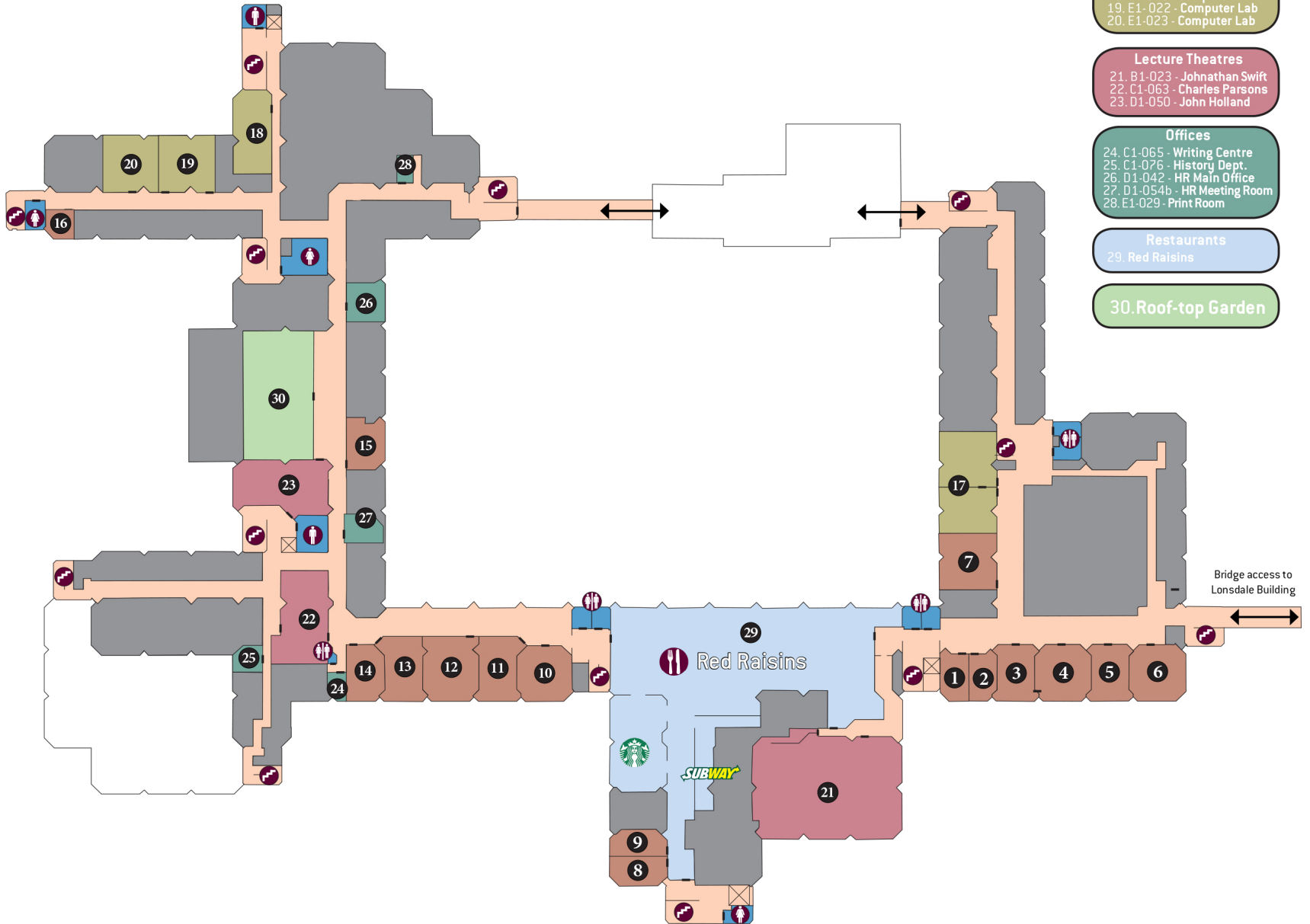
8. AM-065 - Buildings Office
9. AM-068b - SmarterTravel
10. DM-043 - Education Offices
11. EM-008 - Access Office
12. EM-020 - Disability Office
13. EM-023 - Mature Student Office

## Restaurants

14. EM-001 - Eden



# Level 1



## Classrooms

- |           |            |
|-----------|------------|
| 1. A1-050 | 9. B1-005a |
| 2. A1-051 | 10. C1-058 |
| 3. A1-052 | 11. C1-059 |
| 4. A1-053 | 12. C1-060 |
| 5. A1-054 | 12. C1-061 |
| 6. A1-055 | 14. C1-062 |
| 7. A1-083 | 15. D1-049 |
| 8. B1-005 | 16. E1-029 |

## Labs

- 17. A1-084 - Computer Lab
- 18. E1-020 - Computer Lab
- 19. E1-022 - Computer Lab
- 20. E1-023 - Computer Lab

## Lecture Theatres

- 21. B1-023 - Johnathan Swift
- 22. C1-063 - Charles Parsons
- 23. D1-050 - John Holland

## Offices

- 24. C1-065 - Writing Centre
- 25. C1-076 - History Dept.
- 26. D1-042 - HR Main Office
- 27. D1-054b - HR Meeting Room
- 28. E1-029 - Print Room

## Restaurants

- 29. Red Raisins

30. Roof-top Garden

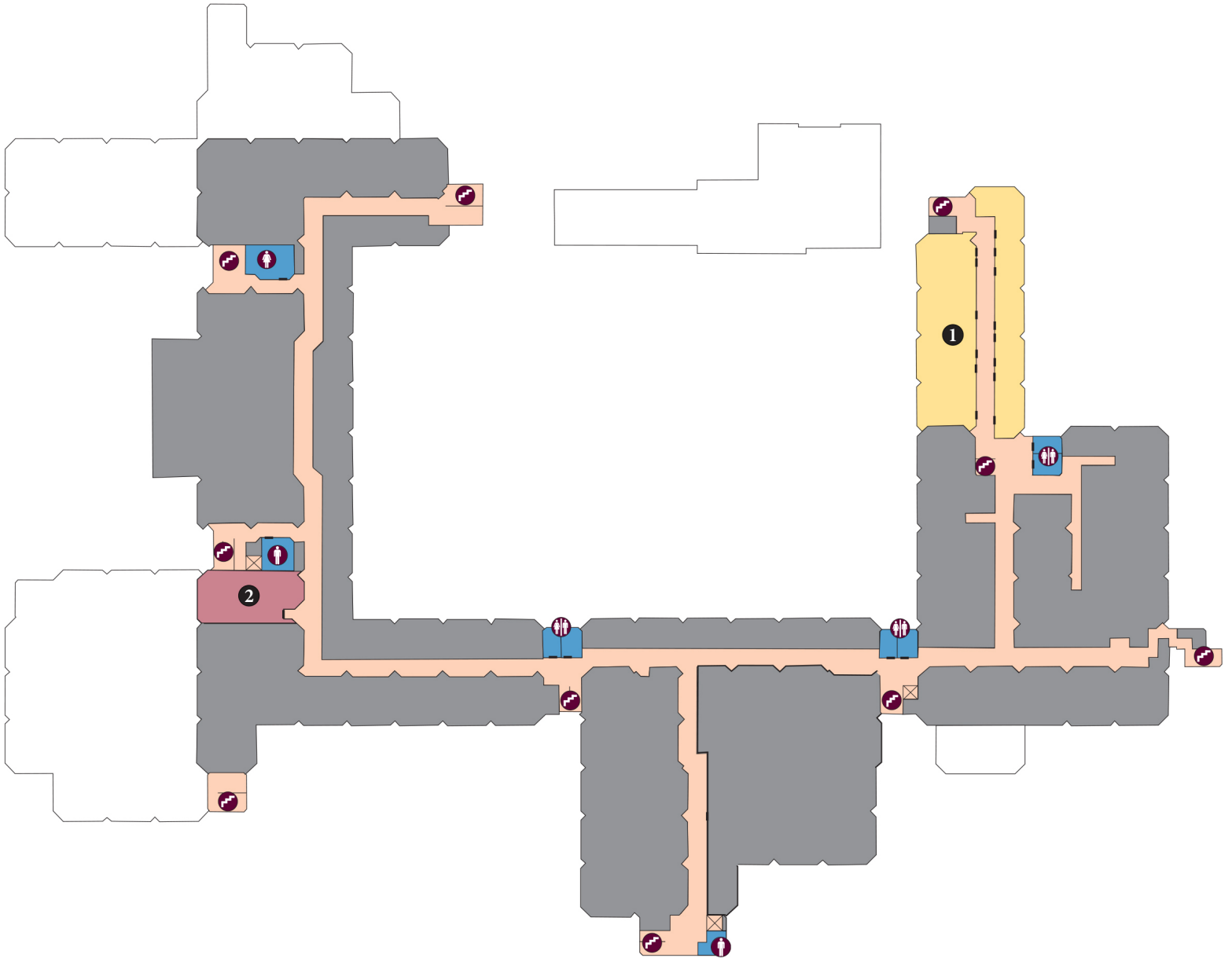
Bridge access to Lonsdale Building



# Level 2

1. Accounts

Lecture Theatres  
2. C2-062 - Donagh O'Malley



# Level 3

- Labs
1. A3-009 - Undergrad. Chemical Lab
  2. B3-022 - Micro Biology Lab
  3. B3-054 - Bio Chemistry Lab 2

