



Rennes 2 University
International Office



**UNIVERSITÉ
RENNES 2**

APPLICATION PROCEDURE

Exchange students

WWW.UNIV-RENNES2.FR

Dear exchange student,

You will find in this document useful information related to your application for your studies at Rennes 2 University in 2022-2023.

Before registering online, please check with the International Office of your home university that an agreement has been signed with Rennes 2 University **for your field and level of studies**.



USEFUL INFORMATION

First, please read the information below. It is very important that you understand the procedure.

Application form to fill in:

https://www.service4mobility.com/europe/BewerbungServlet?identifier=RENNES02&kz_bew_pers=S&kz_bew_art=IN&sp_rache=en

Catalogue for courses open to international exchange students: <https://international.univ-rennes2.fr/studying/exchange-students>

Useful information about your arrival and your stay in Rennes:

<https://international.univ-rennes2.fr/studying/exchange-students>

If you have any question, please do not hesitate to contact: sri-incoming@univ-rennes2.fr

Arrival deadline

A Welcome week will be organized in September and January.
You are required to attend it.

If you can't, because of circumstances **out of your control**, you have to provide a written proof of it.

Warning: Any student who won't arrive before the end of the Welcome Week will not be accepted.

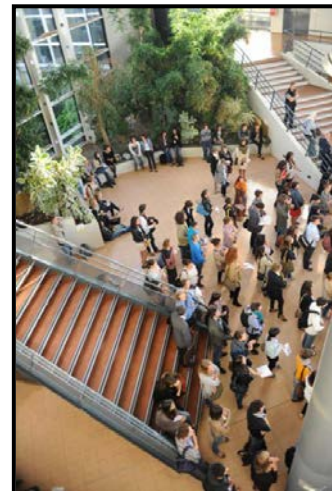


APPLICATION PROCEDURE

1- Application Form

- Please fill in the online Application Form:
https://www.service4mobility.com/europe/BewerbungServlet?identifiant=RENNES02&kz_bew_pers=S&kz_bew_art=IN&sprache=en
- You will then receive an email explaining the next steps of the procedure.
- **Download the PDF application form**

Warning: You absolutely need to download a PDF document. If you only print a screen copy, and not the PDF document, your registration will be rejected!
- Then, **sign** the document, and also have it **signed and stamped** by your home coordinator
- **Upload it** (all the pages) on the Mobility Online portal **before the 15th May/15th October**.



2 - Identity document

Upload on your online portal a copy of your ID card or passport, before your arrival.

3 - Health insurance

EU students

You have to upload online your European Health Insurance Card **before you arrive in Rennes**. It has to be **valid until the end of your study period**.

Non-EU students

As soon as you get your student card of Rennes 2 University (upon arrival) and when you have opened a bank account in France, you should sign up **for free** for French social security on the following link: <https://etudiant-etranger.ameli.fr>, even if you have already paid for it in your home country. It will entitle you to get the reimbursement of your health care expenses.



ADDITIONAL INFORMATION

Required French language level

To attend courses and take exams successfully, you should have a B2 level.

If not, a minimum B1 level is required. You will then have to attend French proficiency evening courses (one semester is offered to exchange students) on arrival.

This requirement does not concern students who attend **French intensive paying courses** in the CIREFE, which you can attend from A1 level.

If you have a proof of an official French language test (TCF, DELF, DALF), you will have to send it to us by e-mail before arrival.

Common European Framework of Reference for Languages - Self-assessment grid

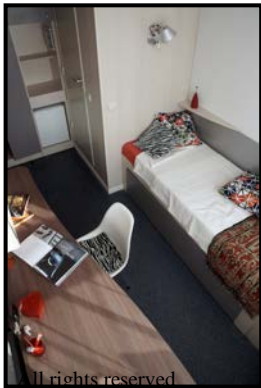
		A1 Basic User	A2 Basic User	B1 Independent user	B2 Independent user	C1 Proficient user	C2 Proficient user
Understanding	Listening	I can understand familiar words and very basic phrases concerning myself, my family and immediate concrete surroundings when people speak slowly and clearly.	I can understand phrases and the highest frequency vocabulary related to areas of most immediate personal relevance (e.g. very basic personal and family information, shopping, local area, employment). I can catch the main point in short, clear, simple messages and announcements.	I can understand the main points of clear standard speech on familiar matters regularly encountered in work, school, leisure, etc. I can understand the main point of many radio or TV programmes on current affairs or topics of personal or professional interest when the delivery is relatively slow and clear.	I can understand extended speech and lectures and follow even complex lines of argument provided the topic is reasonably familiar. I can understand most TV news and current affairs programmes. I can understand the majority of films in standard dialect.	I can understand extended speech even when it is not clearly structured and when relationships are only implied and not signalled explicitly. I can understand television programmes and films without too much effort.	I have no difficulty in understanding any kind of spoken language, whether live or broadcast, even when delivered at fast native speed, provided I have some time to get familiar with the accent.
	Reading	I can understand familiar names, words and very simple sentences, for example on notices and posters or in catalogues.	I can read very short, simple texts. I can find specific, predictable information in simple everyday material such as advertisements, prospectuses, menus and timetables and I can understand short simple personal letters.	I can understand texts that consist mainly of high frequency everyday or job-related language. I can understand the description of events, feelings and wishes in personal letters.	I can read articles and reports concerned with contemporary problems in which the writers adopt particular attitudes or viewpoints. I can understand contemporary literary prose.	I can understand long and complex factual and literary texts, appreciating distinctions of style. I can understand specialised articles and longer technical instructions, even when they do not relate to my field.	I can read with ease virtually all forms of the written language, including abstract, structurally or linguistically complex texts such as manuals, specialised articles and literary works.
Speaking	Spoken interaction	I can interact in a simple way provided the other person is prepared to repeat or rephrase things at a slower rate of speech and help me formulate what I'm trying to say. I can ask and answer simple questions in areas of immediate need or on very familiar topics.	I can communicate in simple and routine tasks requiring a simple and direct exchange of information on familiar topics and activities. I can handle very short social exchanges, even though I can't usually understand enough to keep the conversation going myself.	I can deal with most situations likely to arise whilst travelling in an area where the language is spoken. I can enter unprepared into conversation on topics that are familiar, of personal interest or pertinent to everyday life (e.g. family, hobbies, work, travel and current events).	I can interact with a degree of fluency and spontaneity that makes regular interaction with native speakers quite possible. I can take an active part in discussion in familiar contexts, accounting for and sustaining my views.	I can express myself fluently and spontaneously without much obvious searching for expressions. I can use language flexibly and effectively for social and professional purposes. I can formulate ideas and opinions with precision and relate my contribution skilfully to those of other speakers.	I can take part effortlessly in any conversation or discussion and have a good familiarity with idiomatic expressions and colloquialisms. I can express myself fluently and convey finer shades of meaning precisely. If I do have a problem I can backtrack and restructure around the difficulty so smoothly that other people are hardly aware of it.
	Spoken production	I can use simple phrases and sentences to describe where I live and people I know.	I can use a series of phrases and sentences to describe in simple terms my family and other people, living conditions, my educational background and my present or most recent job.	I can connect phrases in a simple way in order to describe experiences and events, my dreams, hopes and ambitions. I can briefly give reasons and explanations for opinions and plans. I can narrate a story or relate the plot of a book or film and describe my reactions.	I can present clear, detailed descriptions on a wide range of subjects related to my field of interest. I can explain a viewpoint on a topical issue giving the advantages and disadvantages of various options.	I can present clear, detailed descriptions of complex subjects integrating sub-themes, developing particular points and rounding off with an appropriate conclusion.	I can present a clear, smoothly-flowing description or argument in a style appropriate to the context and with an effective logical structure which helps the recipient to notice and remember significant points.
Writing	Writing	I can write a short, simple postcard, for example sending holiday greetings. I can fill in forms with personal details, for example entering my name, nationality and address on a hotel registration form.	I can write short, simple notes and messages. I can write a very simple personal letter, for example thanking someone for something.	I can write simple connected text on topics which are familiar or of personal interest. I can write personal letters describing experiences and impressions.	I can write clear, detailed text on a wide range of subjects related to my interests. I can write an essay or report, passing on information or giving reasons in support of or against a particular point of view. I can write letters highlighting the personal significance of events and experiences.	I can express myself in clear, well-structured text, expressing points of view at some length. I can write about complex subjects in a letter, an essay or a report, underlining what I consider to be the salient issues. I can select a style appropriate to the reader in mind.	I can write clear, smoothly-flowing text in an appropriate style. I can write complex letters, reports or articles which present a case with an effective logical structure which helps the recipient to notice and remember significant points. I can write summaries and reviews of professional or literary works.

Common European Framework of Reference for Languages (CEF): © Council of Europe



Room in a residence hall

We have a limited number of rooms dedicated to exchange students in residence halls.



These rooms are 9 square meters, with a multipurpose room (lavatory, washbasin, and shower), a refrigerator, a desk, a bed (mattress with undersheet), a chair, a wardrobe, shelves, and a bin.

There is one kitchen per floor with two sinks, eight hotplates, two microwaves and a breakfast nook.

It costs about 250€ / month (Including the Internet)

In addition

In each building, you can find a TV room, a leisure room, a soda vending machine and a launderette.

How to ask for a room?

You can ask for a room in your online application form.

However, this is just a request. There is no guarantee that you will get the room you asked for.

Please note that we apply the "first come, first served" policy.

Warning: You can ask for a room but this **is not compulsory**. You can find a room or flat by yourself if you prefer. We offer this solution in order to help you, but **the University will not be held responsible** if the room does not correspond to your expectations.

No change of residence halls will be allowed.

You will receive an answer (positive or negative) at the beginning of July for the 1st semester, and mid-December for the 2nd semester.

It is no use asking directly the CROUS* for a room.

Finally, the rooms are booked for a fixed period of stay, which means that, if you cancel your booking after the 20th August (1st semester) or after the 10th December (2nd semester), you will have to pay the loan till the end of the month of the cancellation.

* CROUS : Centre Régional des Œuvres Universitaires et Scolaires

Learning French at Rennes 2 University (CIREFE)

You can learn French through the CIREFE (Centre International Rennais d'Etudes de Français pour Etrangers). Classes are aimed at non Francophone students who wish to learn French and learn about French civilisation and culture.

The CIREFE offers:

- **French support courses**: 4 hours a week (**one semester is offered to all exchange students**)
- **Intensive courses**: several levels of proficiency, 16 to 20 hours a week (**students have to pay** to attend these courses: www.univ-rennes2.fr/cirefe)

If you are interested in signing up for one of these courses you will have to take an online proficiency test at the CIREFE before your arrival.

If you don't take the test, you will be unable to sign up for the course.

If you have a proof of an official French language test (TCF, DELF, DALF), please send us a copy of it by e-mail before arrival.



Choice of courses in the departments

Please note:

The course catalogue will be modified for the start of the 2022/2023 academic year.

For the moment, you can consult the 2021/2022 catalogue online.

The new catalogue will not be available before the start of the new school year (September / October 2022).

Some of the courses you have chosen may no longer exist in 2022/2023.

You can find the specific courses catalogue (2021/2022) for exchange students on the following link:
<https://international.univ-rennes2.fr/studying/exchange-students>

2 departments maximum + French language support courses (CIREFE) + foreign language in the Language Center

International exchange students can pick up courses:

- in 2 different departments, linked to their formation,
 - in the CIREFE (Evening French language support courses)
 - in the language center (courses for beginners and non-beginners)
- with a maximum of 36 ECTS per semester.

The choice of courses has to take into account restrictions due to timetables, specific requirements of each department and the number of registered students.

- Students who attend **proficiency evening courses** can also attend courses in the departments (fields of studies) during the day. These courses are free of charge for 1 semester for all exchange students and are credited with 6 ECTS if the students pass the exams.
- Students who attend French paying intensive courses at the CIREFE will only attend these courses and will not be able to attend courses taught in the departments.

Reminder : Required French language level

Students attend the same courses and the same exams as local students.

Warning: they should have at least a B2 level in French language, to attend courses taught in French and take exams successfully. If that is not the case, a B1 level is at least required. They will then have to attend French proficiency evening courses (one semester is offered to all exchange students) upon arrival.

Exception: Students who attend paying intensive French courses in the CIREFE are not required to have a B2 level of French.

FIELDS OF STUDIES OFFERED AT RENNES 2 UNIVERSITY

FACULTY OF LANGUAGES	FACULTY OF ARTS, LITERATURE AND COMMUNICATION	FACULTY OF SOCIAL SCIENCES	FACULTY OF HUMAN SCIENCES	FACULTY OF SPORTS SCIENCE AND PHYSICAL ACTIVITY
German	Fine arts	Social and Economic Administration	Psychology	Sport sciences
English	Performing arts (cinema et theater)	Geography	Education Sciences	
Breton and Celtic studies	Art history and archaeology	History	Sociology	
Spanish	Communication	Mathematics and Computing Applied to Social Sciences		
Arabic studies	Literature / Modern letters			
Chinese studies	Music studies			
Italian				
Languages Applied to Business and Translation				
Portuguese				
Russian				

After your Welcome week, you will have 2 weeks to try courses before your final registration.



OPENING HOURS

Monday to Thursday : from 2pm to 5pm

Friday : from 1.30 pm to 4.30pm

WEBSITE

www.univ-rennes2.fr/international

INTERNATIONAL OFFICE

Villejean Campus
Place du recteur Henri Le Moal
cs 24307
35043 Rennes cedex
Building. D, door 307

Phone. : +33 2 99 14 10 92

E-mail : sri-incoming@univ-rennes2.fr

Metro : Métro Villejean-Université

CONCEPTION : SERVICE DES RELATIONS INTERNATIONALES, UNIVERSITÉ RENNES 2
IMPRESSION : IMPRIMERIE DE L'UNIVERSITÉ RENNES 2 

March 2022



**INTERNATIONAL
OFFICE**

WWW.UNIV-RENNES2.FR



Cofinanced by the EU