

Fact Sheet 2017/2018

Global Education Team Contacts	
Global Education Manager	Elissa Williams e.williams1@keele.ac.uk (44) (0)17827 34114
Global Education and Erasmus Officer	Lisa Stoker l.j.stoker@keele.ac.uk (44) (0)17827 33491
Global Education Assistant	Rachel Skittery r.ford@keele.ac.uk (44) (0)17827 33048
International Mobility Programmes Assistant	Jodie Renshaw j.renshaw@keele.ac.uk (44) (0)1782 734008
Website	
http://www.keele.ac.uk/studyabroad/	
Address	
Global Education Team Keele University, IC2 Staffordshire ST5 5BG United Kingdom	



History

Keele University is situated on an estate with extensive woods, lakes and parkland, formally owned by the Sneyd family.

The Sneyd family came into possession of the Keele Estate in the mid-16th century. Before the Sneyds, the area was owned by the Knights Templar, a medieval Military Order. The first Keele Hall was built in 1580 and it was rebuilt in 1860. The hall has Grade II listing from English Heritage for its architectural importance.

The University itself was founded as the University College of North Staffordshire in 1949 and received its Charter as the University of Keele in 1962.

Keele Mission

Keele will provide a high quality educational experience for students shaped by outstanding research, contributing positively to social, environmental and economic agendas locally, nationally and internationally.

Important Dates 2017/2018	
Semester 1 (Fall)	Semester 2 (Spring)
Arrival: 19 th September 2017 Orientation: 20 th – 24 th September Teaching: 25 th September – 15 th December Exams: 8 th January – 19 th January* Departure: 20 th January [†]	Arrival: 17 th January 2018 Orientation: 18 th – 21 st January Teaching: 22 nd January – 4 th May Exams: 8 th May – 25 th May [†] Departure: 26 th May
Nomination Deadline: 1 st June 2017 Application Deadline: 30 th June 2017	Nomination Deadline: 1 st October 2017 Application Deadline: 15 th October 2017
<i>*Alternative assessment can be arranged upon request for students whose University semester starts in January [†] Students should check their accommodation agreement for departure dates as they may be required to find extra accommodation for any exams late in the exam period.</i>	



Academics
Language of Instruction - English
Faculties Academic Schools within the University are organised within the three following faculties: Faculty of Health (Not available to exchange/study abroad students) Schools of Nursing and Midwifery, Pharmacy, Health and Rehabilitation, Medicine Faculty of Humanities and Social Sciences Schools of Law, Social Science & Public Policy, Politics, International Relations and Philosophy, Keele Management School, Humanities. Faculty of Natural Sciences Schools of Computing and Mathematics, Life Sciences, Physical and Geographical Sciences, Psychology For more information about our Single and Dual Honours degrees: http://www.keele.ac.uk/ugcourses/
Course-load Requirements Students are required to carry a full course load to meet UKBA visa requirements. A full course load is usually made up of four 15-credit modules or 30 ECTS per semester.
Course Registration Information As Exchange, ERASMUS, and Study Abroad students you will have pre-registered for courses by returning the learning agreement along with your online application by the application deadline. Some of the modules may clash and you may need to choose alternative courses. Your courses are finalised during the first few days of the semester by meeting the Subject Tutors and your Personal Tutor. You will be given further details about this at the Welcome and Information session and also in your welcome pack given out at this session.

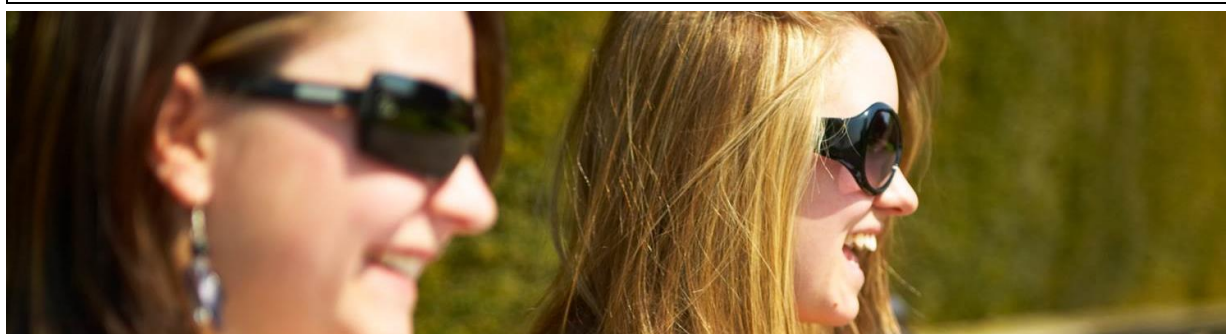
Every effort has been made to ensure that the information contained in this brochure is accurate and up to date at the time of print. Details in this brochure relates to the 2016/17 academic year and may not be applicable to the academic year 2018/19 or beyond, which may be due to external factors beyond our control.

University Grading System

Keele courses are divided into modules. Successful completion of a module will result in a student gaining a pre-defined number of credits at a specific level. Modules are assessed at the end of the module on a percentage scale.

Class I	70 – 100%	A
Class II I	60 – 69%	B+
Class II ii	50 – 59%	B-
Class III	40 – 49%	C
Pass	35 – 39%	D
Fail	0 – 34%	

These are the final degree classifications, and all grades above are considered to be satisfactory. The majority of students receive marks in the 50 – 69% range. A mark of below 40% for an individual module is a fail and no credits are awarded for the module.



Accommodation

The University has five Halls of Residence on campus, with a total of over 3,000 rooms, all within easy walking distance of our restaurants, the Students' Union and the teaching buildings. We also have a Hall off campus with 140 bedrooms.

We offer a wide range of types of rooms, from basic study bedrooms with shared washing facilities to premier ensuite rooms with private bathrooms. Your accommodation application will ask you for your preferences and we will do our best to give you the type of accommodation you request, but cannot guarantee this.

All rooms have basic furnishings (bed, wardrobe, desk, chair, bedside cabinet and lamp) and are centrally heated. The electricity supply is 240 AC, mostly requiring 13-amp fused plugs for any electrical equipment.

For more information please visit: <http://www.keele.ac.uk/studyatkeele/accommodation/>

Exchange/Study Abroad students can also purchase a meals and accommodation package. Prices are available on request.

Exchange Package

This includes:

- Housing (Single Room)
- Seven Meals per week (term time only)
- Airport Pickup
- On Site Support
- Bedding Pack

Study Abroad Package

This includes:

- Tuition
- Housing (Single Room)
- Seven Meals per week (term time only)
- Airport Pickup
- On Site Support
- Bedding Pack

Arrival and Orientation

Immigration Requirement	<p>Courses under 6 Months</p> <p>If you undertake a course of study at Keele University that requires you to be based in the UK for 6 months or less, we'll issue you with the necessary documentation to apply for a Student Visitor Visa. A Student Visitor Visa allows you to enter the UK and study for up to 6 months. This applies particularly if you're coming to study on one semester programmes.</p> <p>Courses over 6 Months</p> <p>If you undertake a course of study at Keele University that requires you to be based in the UK for longer than 6 months, we'll issue you with the necessary documentation to apply for a visa under Tier 4 of the Points Based System.</p> <p>Under the rules of the Points Based System, the University will issue students with a Confirmation of Acceptance for Studies (CAS). The CAS is an electronic record held on the UKBA system and includes information about you and the course you'll be studying.</p> <p>Your CAS will be issued when you have fulfilled all the conditions of your offer of a place at our university.</p>
Before Arrival	<p>If you are coming to the UK for the first time, we know that there is a huge temptation to bring everything you own. We have put together the following information to help you decide what you will really need: http://www.keele.ac.uk/studyabroad/studentscomingtokeele/arrivalorientation/whattobring/</p>
Arriving in the UK	<p>International Student Support operates a Meet and Greet Airport Collection service for all new students who are arriving in the UK for the first time. In September there is a pickup at Manchester International Airport and London Heathrow Airport, in January there is a pick from Manchester International Airport only.</p> <p>On these days, our friendly Pre-sessional Ambassadors will welcome you to the UK and ensure you are safely transported to Keele campus.</p> <p>More information can be found here: http://www.keele.ac.uk/arrival/arrivingatkeele/</p>
Orientation	<p>There will be an orientation programme for all visiting students in September and January. In September you will join other full-time degree-seeking international students, there will also be some individual sessions just for exchange and study abroad students. In January you will be joined by Keele students who have returned from studying abroad for some of your activities.</p> <p>More information about the Welcome Week Programme can be found here: http://www.keele.ac.uk/studyabroad/studentscomingtokeele/arrivalorientation/enrolmentwelcomeweek/</p>



Every effort has been made to ensure that the information contained in this brochure is accurate and up to date at the time of print. Details in this brochure relates to the 2016/17 academic year and may not be applicable to the academic year 2018/19 or beyond, which may be due to external factors beyond our control.