

Facts & Figures

WU
WIRTSCHAFTS
UNIVERSITÄT
WIEN VIENNA
UNIVERSITY OF
ECONOMICS
AND BUSINESS





Contents

| | |
|--|-----------|
| Key Data 2019/20 | 4 |
| International Recognition | 6 |
| Funding | 8 |
| Organization | 9 |
| Academic Units | 10 |
| WU's Departments | 10 |
| WU's Competence Centers | 10 |
| WU's Research Institutes | 11 |
| Programs | 12 |
| WU's degree programs | 12 |
| WU Executive Academy program portfolio | 13 |
| Students | 14 |
| Research | 18 |
| Campus WU | 20 |
| Key Facts | 20 |
| Vienna | 20 |
| Buildings | 21 |
| Contact information | 26 |

Key Data 2019/20



INTERNATIONAL

Partner universities _____ ~240
Courses in English _____ ~450/semester



STUDENTS

Total students (fall 2019) _____ 21,489 (47% women)
International students (fall 2019) _____ 6,078 (49% women)
Incoming exchange students _____ ~1,000 per year
Outgoing exchange students _____ ~1,000 per year



FACULTY AND STAFF¹

| | |
|----------------------------|-------------------|
| Total faculty ² | 514 (50% women) |
| Administrative staff | 532 (84% women) |
| Total | 1,172 (64% women) |



CAMPUS RESOURCES

| | |
|---------------------|------------------------|
| Premises Campus WU | 100,000 m ² |
| Premises Library | |
| Total floor space | 7,200 m ² |
| Volumes | ~ 682,000 |
| Printed journals | 593 |
| Electronic journals | 25,984 |
| Study places | 1,680 |
| Visitors | 1,172,300 |

¹⁾ 2019 in full-time equivalents

²⁾ not including personnel funded by third parties

International Recognition

FINANCIAL TIMES RANKING 2019

9th

MASTERS IN
MANAGEMENT

Global Masters in Management Ranking

WU's "Master in International Management" program placed 9th out of 100 ranked programs worldwide. This puts WU at 2nd place in the German-speaking countries.

41st

EUROPEAN
BUSINESS SCHOOLS

European Business Schools Ranking

95 universities were included in the 2019 ranking of the best European business schools, and WU came in at 41st place.

48th

EXECUTIVE MBA

Executive MBA Ranking

The WU Executive Academy's Global Executive MBA program placed 48th out of 100 ranked programs. In those categories that are particularly important for program participants, the Global Executive MBA ranks among the best 20 programs worldwide:

- › Working experience of students: 9th
- › International course experience: 13th

THE ECONOMIST RANKING 2019

5th

MASTERS IN
MANAGEMENT

Masters in Management Ranking

WU participated in this ranking for the first time with its Master in International Management/CEMS (MIM) program and made a sensational debut, coming in at 5th place out of 40 programs from around the world. This result makes WU the second-best university from the German-speaking region represented in the ranking.

QS WORLD UNIVERSITY RANKINGS 2019/20

37th

BUSINESS &
MANAGEMENT
STUDIES

Business & Management Studies Ranking

WU placed 37th in the 2020 Business & Management Studies ranking, which is part of the subject area Social Sciences & Management.

10th

MASTERS IN
MARKETING

Masters in Marketing Ranking

2019 marks WU's first entry in the "Masters in Marketing" ranking, where the WU Master's Program in Marketing achieved an outstanding result, placing 10th out of 76 programs ranked.

17th

MASTERS IN
MANAGEMENT

Masters in Management Ranking

WU's Master's Program in Strategy, Innovation, and Management Control achieved an excellent result in the QS Business Masters Rankings. Its rank at 17th place makes it one of the world's best master's programs in management.

19th

MASTERS
IN FINANCE

Masters in Finance Ranking

WU provides an outstanding education to future managers. The Master's Program in Quantitative Finance came in at an impressive 19th out of 159 renowned programs from around the globe.

ACCREDITED BY



INTERNATIONAL MEMBERSHIPS

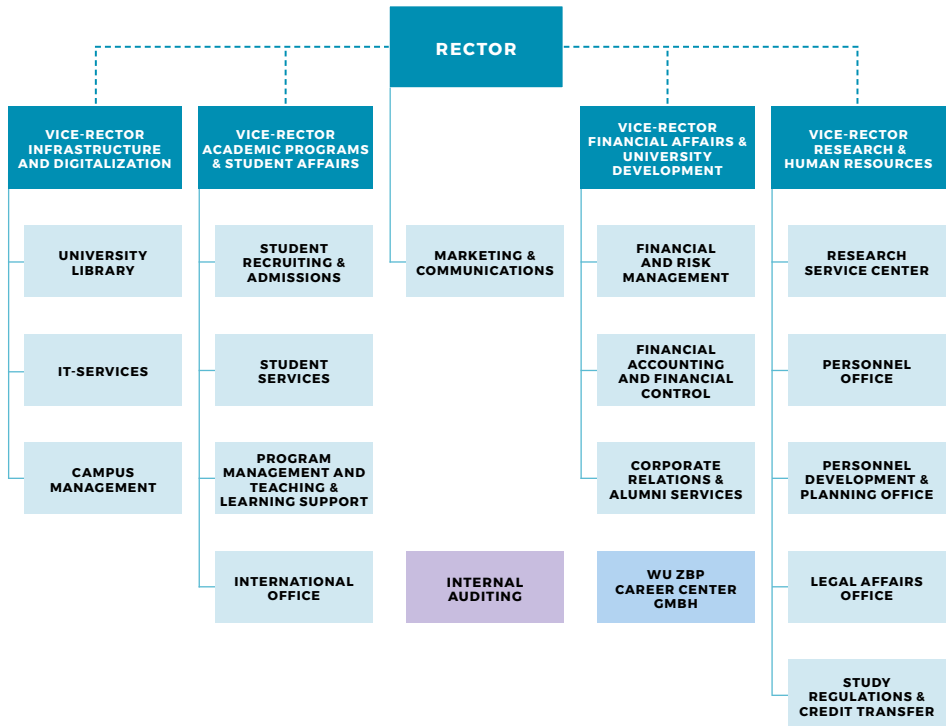


Funding

FUNDING 2019

| Revenues (in million EUR) | 2019 | 2019 in % |
|--|---------------|--------------|
| Federal Ministry of Science and Research | 126.4 | 74.9 |
| Tuition fees (including State Compensation for Tuition fees) | 6.9 | 4.1 |
| Research funding for projects | 12.2 | 7.2 |
| Other income and overheads | 8.2 | 4.8 |
| Executive education | 11.0 | 6.5 |
| Changes unfinished services – research grants | 1.0 | 0.6 |
| Research grants | 1.5 | 0.9 |
| Financial income | 1.6 | 1.0 |
| Total | 168.8 | 100.0 |
| Expenses (in million EUR) | | |
| Personnel | -105.0 | 65.5 |
| Operating charges | -47.8 | 29.8 |
| Depreciation | -7.0 | 4.3 |
| Costs of goods and services | -0.6 | 0.4 |
| Financial expenses | 0.0 | 0.0 |
| Taxes | -0.1 | 0.1 |
| Total | -160.4 | 100.0 |

Organization*



----- The Rector's coordinative function

* as of October 1, 2019

Academic Units

WU'S DEPARTMENTS

| | |
|--|---|
| Economics | wu.ac.at/en/economics |
| Finance, Accounting and Statistics | wu.ac.at/en/fas |
| Foreign Language Business Communication | wu.ac.at/en/bizcomm |
| Global Business and Trade | wu.ac.at/en/welthandel |
| Information Systems and Operations | wu.ac.at/en/ipm |
| Management | wu.ac.at/en/management (website in German) |
| Marketing | wu.ac.at/en/marketing |
| Private Law | wu.ac.at/en/privatelaw |
| Public Law and Tax Law | wu.ac.at/en/publicandtaxlaw |
| Socioeconomics | wu.ac.at/en/department-socioeconomics |
| Strategy and Innovation | wu.ac.at/en/strategy-and-innovation |

WU'S COMPETENCE CENTERS

| | |
|---|---|
| Business Languages | wu.ac.at/en/zfw |
| Emerging Markets and CEE | wu.ac.at/en/emcee |
| Empirical Research Methods | wu.ac.at/en/methods |
| Entrepreneurship Center | wu.ac.at/en/startingup |
| Experimental Research | wu.ac.at/en/exp |
| Non-profit Organizations and Social Entrepreneurship | wu.ac.at/en/npocompetence |
| Sustainability Transformation and Responsibility | wu.ac.at/en/star |

WU'S RESEARCH INSTITUTES

| | |
|--|---|
| Capital Markets | wu.ac.at/en/isk |
| CEE Legal Studies | wu.ac.at/fowi (website in German) |
| Computational Methods | wu.ac.at/en/firm |
| Co-Operation and Co-Operatives | wu.ac.at/ricc (website in German) |
| Cryptoeconomics | wu.ac.at/en/cryptoeconomics |
| Economics of Aging | wu.ac.at/en/altersoekonomie |
| Economics of Inequality | wu.ac.at/en/ineq |
| European Affairs | wu.ac.at/en/europainstitut |
| Family Business | wu.ac.at/en/research-institute-for-family-business |
| International Taxation | |
| Liberal Professions | wu.ac.at/fb (website in German) |
| Regulatory Economics | wu.ac.at/en/regulation |
| Spatial and Real Estate Economics | wu.ac.at/en/immobilienwirtschaft |
| Supply Chain Management | wu.ac.at/en/scm |
| Urban Management and Governance | wu.ac.at/en/urban |

Programs

WU'S DEGREE PROGRAMS

| | | |
|--------------------------------|--|--|
| BACHELOR'S PROGRAMS | <ul style="list-style-type: none"> › Business, Economics and Social Sciences (BSc WU) four majors: <ul style="list-style-type: none"> › Business Administration › International Business Administration › Economics and Socioeconomics › Information Systems › Business and Economics (BSc WU), English | <ul style="list-style-type: none"> › Business Law (LL.B. WU) |
| MASTER'S/LL.M. PROGRAMS | <ul style="list-style-type: none"> › Business Education (MSc WU) › Export and Internationalization Management (MSc WU) › Finance and Accounting (MSc WU) › Management (MSc WU) › Socioeconomics (MSc WU) › Taxation and Accounting (MSc WU) › Economics (MSc WU), English › Information Systems (MSc WU), English › International Management/CEMS (MSc WU & CEMS MIM), English › Marketing (MSc WU), English › Quantitative Finance (MSc WU), English › Socio-Ecological Economics and Policy (MSc WU), English › Strategy, Innovation, and Management Control (MSc WU), English › Supply Chain Management (MSc WU), English | <ul style="list-style-type: none"> › Business Law (LL.M. WU) |
| DOCTORAL/PHD PROGRAMS | <ul style="list-style-type: none"> › Social and Economic Sciences (Dr. rer. soc. oec.) › PhD Program in Economics and Social Sciences (PhD), German with English tracks (intended mainly for WU's academic staff) › PhD in Finance (PhD), English › PhD in International Business Taxation (PhD), English | <ul style="list-style-type: none"> › Business Law (Dr. iur.) |

WU EXECUTIVE ACADEMY PROGRAM PORTFOLIO

| | | |
|---|---|---|
| MBA/MASTER OF LAWS PROGRAMS | <ul style="list-style-type: none"> › Global Executive MBA › Executive MBA Bucharest › Executive MBA PGM › Professional MBA with specialization areas <ul style="list-style-type: none"> › Digital Transformation and Data Science › Energy Management › Entrepreneurship & Innovation › Finance › Health Care Management › Marketing & Sales › Project Management › Public Auditing › Social Management | <ul style="list-style-type: none"> › Master of Laws (International Tax Law) › Master of Business Law (Corporate Law) › Master of Legal Studies (European Business Law) |
| CERTIFICATE PROGRAMS | <ul style="list-style-type: none"> › Health Care Management › Logistics & Supply Chain Management › Marketing & Sales › Post Graduate Management (PGM) › Risk & Insurance Management › Social Management › Tourism & Event Management | |
| BBA DIPLOM BETRIEBSWIRTIN^{WU} | <ul style="list-style-type: none"> › Logistics & Supply Chain Management › Marketing & Sales › Risk & Insurance Management › Tourism & Event Management | |
| CUSTOM PROGRAMS AND SHORT PROGRAMS | Custom Programs <ul style="list-style-type: none"> › In-house MBA^{WU} › Leadership Academy^{WU} › Management Development Program^{WU} › Compact Course^{WU} › Executive/Expert Lounge^{WU} › Special Workshops^{WU} › Field Trips^{WU} | Short Programs <ul style="list-style-type: none"> › Pioneers of the 21st century › Governance Excellence – for supervisory board members › Employer Brand Manager › Data Science › Digital Transformation › Blockchain transforming Business › Public Procurement Excellence › Agile Leadership (online) |

Students

| STUDENT ENROLLMENT | Fall 2017 | Fall 2018 | Fall 2019 | Percent women |
|--|-----------|-----------|-----------|---------------|
| Total students | 23,572 | 22,016 | 21,453 | 47% |
| degree program students | 22,117 | 20,504 | 20,103 | 48% |
| international students | 6,408 | 6,023 | 6,078 | 49% |
| New students¹ | 5,350 | 5,855 | 4,218 | 50% |
| first-time university enrollments ² | 4,136 | 4,205 | 3,380 | 50% |

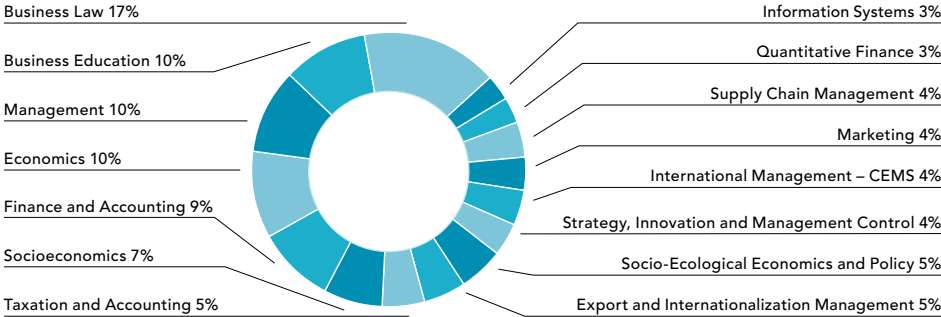
¹ "New students" refers to first-time WU students and includes both program and non-program students.

² "First-time university enrollments" refers to students enrolled in an Austrian university program for the first time, such as high school graduates, graduates of a university of applied sciences, as well as students or graduates from a foreign institution of higher education.

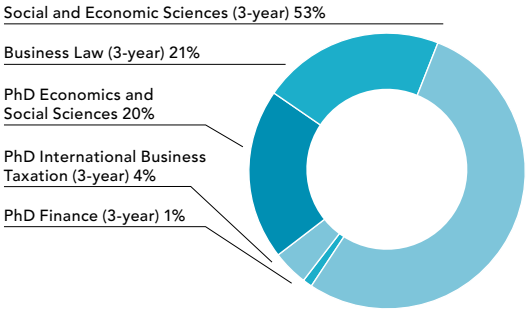
| ENROLLMENT BY PROGRAM ³ | Fall 2017 | Fall 2018 | Fall 2019 |
|------------------------------------|-----------|-----------|-----------|
| Bachelor students | 17,608 | 16,163 | 15,556 |
| MSc students | 3,594 | 3,413 | 3,589 |
| Doctoral/PhD students | 818 | 727 | 771 |

³ Students may be enrolled in more than one type of program. This is why the enrollment statistics by program differ from the total number of degree-program students.

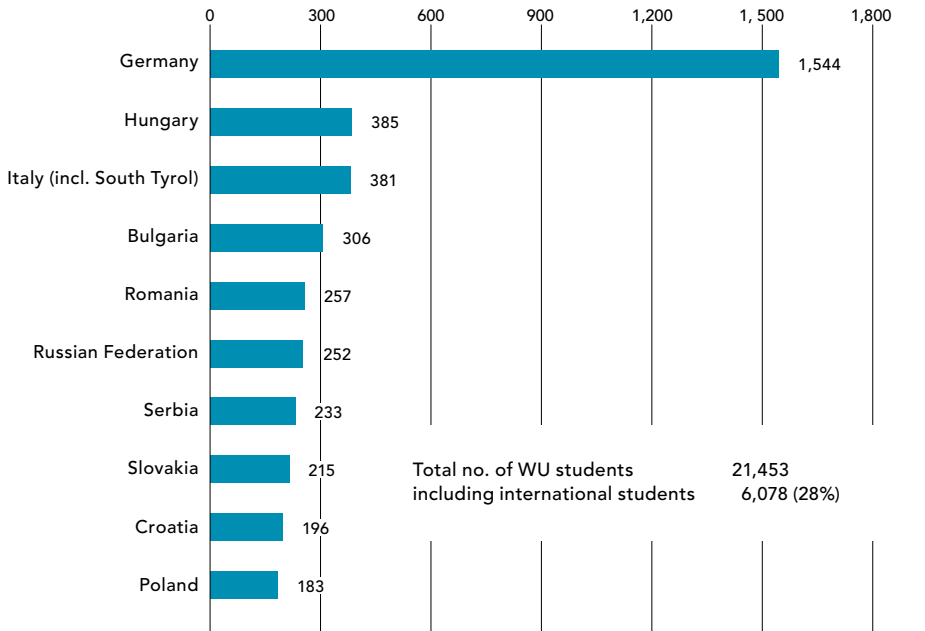
ENROLLMENT DISTRIBUTION MSC PROGRAMS



ENROLLMENT DISTRIBUTION DOCTORAL/PHD PROGRAMS



WU'S INTERNATIONAL STUDENTS: TOP 10*



* as of January 2020

| GRADUATES | Academic year 2016/17 | Academic year 2017/18 | Academic year 2018/19 | Percent women |
|------------------------|-----------------------|-----------------------|-----------------------|---------------|
| Total graduates | 2,957 | 3,033 | 3,020 | 49% |
| bachelor's programs | 1,772 | 1,937 | 2,010 | 50% |
| master's programs | 1,085 | 1,009 | 933 | 50% |
| doctoral programs | 106 | 87 | 77 | 43% |

SERVICES FOR STUDENTS AND GRADUATES



ZBP
CAREER CENTER

- › **2,781 job offers in 2019, incl. qualified internships and part-time student jobs**
- › **Career Center's experts held 1,736 career counselling sessions**
- › **110 employers attended on-campus career events**



ALUMNI

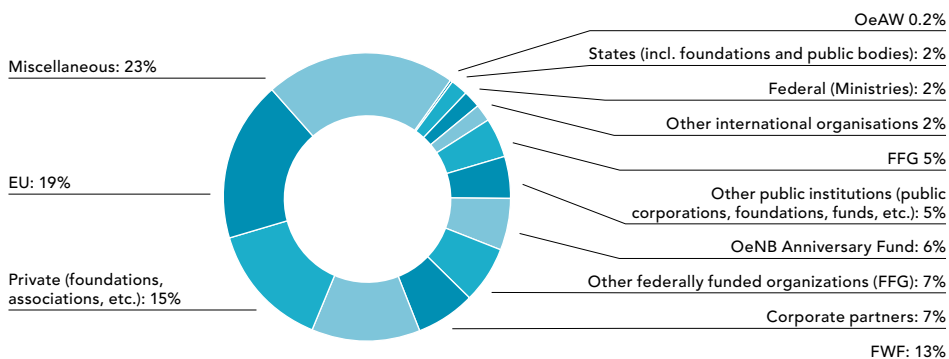
- › **55,000 alumni**
- › **more than 60 hubs worldwide**
- › **120 nations**

Research

RESEARCH OUTPUT 2019

- › 35 books, monographs
- › 573 original contributions to collections
- › 779 original journal contributions
- › 106 working/discussion papers, preprints
- › 88 proceedings contributions
- › 849 presentations at academic conferences
- › 74 editorships (of individual volumes)

DISTRIBUTION OF THIRD-PARTY FUNDING 2019



FWF = Austrian Science Fund, OeAW = Austrian Academy of Sciences, OeNB = Oesterreichische Nationalbank, FFG = Austrian Research Promotion Agency

| ORGANIZATION | National | EU | Non-EU countries | Total |
|--|----------------------|---------------------|-------------------|----------------------|
| EU | 74,719.74 | 2,552,049.19 | – | 2,626,768.93 |
| Other international organisations | 9,176.04 | 193,616.64 | 8,362.41 | 211,155.09 |
| Federal Republic of Austria | 307,704.81 | – | – | 307,704.81 |
| States | 296,191.00 | – | – | 296,191.00 |
| Municipalities and associations of municipalities (excluding Vienna) | – | 5,000.00 | – | 5,000.00 |
| FWF | 1,848,726.00 | – | – | 1,848,726.00 |
| FFG | 694,264.66 | – | – | 694,264.66 |
| OeNB Anniversary Fund | 873,348.81 | – | – | 873,348.81 |
| Other public institutions | 518,319.21 | 203,472.59 | – | 721,791.80 |
| Corporate partners | 495,431.38 | 180,264.74 | 314,384.99 | 990,081.11 |
| Private | 1,910,171.92 | 87,851.23 | 12,402.17 | 2,010,425.32 |
| Miscellaneous | 3,127,166.21 | 102,173.22 | 19,757.19 | 3,249,096.62 |
| Total | 10,155,219.78 | 3,324,427.61 | 354,906.76 | 13,834,554.15 |

Campus WU

Diversity, open-mindedness, responsibility, and innovation – the Campus WU is the concrete realization of WU’s vision for a modern university. The new architecture reflects the values and ideas WU stands

for. The campus consists of seven building complexes, designed by international architects, clustered around the central Library & Learning Center.

KEY FACTS

- › Seven building complexes, 100,000m² total floor space
- › Property area: 90,000m², 560 meters long and between 150 and 210 meters wide
- › 55,000 m² publicly accessible grounds
- › Approximately 4,000 rooms, including 90 auditoriums and seminar rooms seating well over 5,000 students
- › A total of 3,000 student workstations on campus, 1,500 in the Central Library

VIENNA

| | |
|---|---------------------|
| Population City of Vienna | 1.9 million |
| Population greater metropolitan area | 2.8 million |
| Size | 415 km ² |
| Quality of Living (Mercer), 2009–2019 | 1st place |
| Liveability (The Economist), 2018–2019 | 1st place |
| Monocle’s Most Livable Cities Index, 2019 | 5th place |



1



2

| BUILDING | KEY FACTS | UNITS |
|--|--|---|
| <p>LC: Library & Learning Center [1]</p> | <ul style="list-style-type: none"> › Architects: Zaha Hadid Architects, Hamburg › Total floor space: approx. 44,000m² › 1,500 student workstations › Cantilevered roof with monitor | <ul style="list-style-type: none"> › Student Services › IT Services › International Office › WU ZBP Career Center <p>Competence Center</p> <ul style="list-style-type: none"> › Business Language Center <p>Central Library</p> <ul style="list-style-type: none"> › Library management |
| <p>EA: WU Executive Academy [2]</p> | <ul style="list-style-type: none"> › Architects: NO.MAD Arquitectos, Madrid › Total floor space: approx. 7,000m² › Reflective façade | <ul style="list-style-type: none"> › WU Executive Academy › Corporate Relations & Alumni Services <p>Competence Center</p> <ul style="list-style-type: none"> › Sustainability Transformation and Responsibility |



| BUILDING | KEY FACTS | UNITS |
|--|---|---|
| <p>D4: Departments</p> | <ul style="list-style-type: none"> › Architects: Estudio Carme Pinós S. L., Barcelona › Total floor space: approx. 19,000m² › 'Tetris' façade | <p>Departments</p> <ul style="list-style-type: none"> › Economics › Finance, Accounting and Statistics (without Accounting) › Socioeconomics <p>Research Institutes</p> <ul style="list-style-type: none"> › Computational Methods › European Affairs › Regulatory Economics › Spatial and Real Estate Economics <p>Competence Center</p> <ul style="list-style-type: none"> › Empirical Research Methods <p>OeNB Library for Social Sciences</p> |



| BUILDING | KEY FACTS | UNITS |
|---|--|---|
| <p>D3/AD: Departments and Administration</p> | <ul style="list-style-type: none"> › Architects: CRABstudio, London › Total floor space: approx. 25,000 m² › Two-part complex › Yellow-orange-red façade faced with wooden planks | <p>Departments</p> <ul style="list-style-type: none"> › Finance, Accounting and Statistics (Accounting only) › Private Law › Public Law and Tax Law <p>Research Institutes</p> <ul style="list-style-type: none"> › CEE Legal Studies › International Taxation › Urban Management and Governance <p>Administration</p> <ul style="list-style-type: none"> › Rector's Council › University management <p>Library for Law</p> |



| BUILDING | KEY FACTS | UNITS |
|--|--|---|
| <p>TC/D1: Teaching Center and Departments</p> | <ul style="list-style-type: none"> › Architects: BUSarchitektur ZT GmbH, Vienna › Total floor space: approx. 32,000m² › Space for approx. 5,000 people › Auditorium Maximum seats 650 | <p>Department</p> <ul style="list-style-type: none"> › Global Business and Trade <p>Research Institutes</p> <ul style="list-style-type: none"> › Co-Operation and Co-Operatives › Family Business › Liberal Professions › Supply Chain Management <p>Competence Centers</p> <ul style="list-style-type: none"> › Emerging Markets & CEE › Entrepreneurship Center |



| BUILDING | KEY FACTS | UNITS |
|---|---|--|
| D2/SC: Departments and Student Center [1] | <ul style="list-style-type: none"> › Architects: Atelier Hitoshi Abe, Japan › Total floor space: approx. 29,000 m² › Two building segments › Millefeuille building structure | Departments <ul style="list-style-type: none"> › Foreign Language Business Communication › Information Systems and Operations › Management › Marketing Research Institute <ul style="list-style-type: none"> › Urban Management and Governance Competence Center <ul style="list-style-type: none"> › Non-profit Organizations and Social Entrepreneurship Students' Union |
| D5: Departments [2] | <ul style="list-style-type: none"> › Holzer Kobler Architekturen and Freimüller Söllinger Architektur ZT GmbH › Three segments used for different purposes: WU, Sigmund Freud Privat Universität, student apartments › communicative area in the courtyard | Departments <ul style="list-style-type: none"> › Strategy and Innovation › Socioeconomics Research Institute <ul style="list-style-type: none"> › Economics of Aging Competence Center <ul style="list-style-type: none"> › Experimental Research |

Contact information

WU (Vienna University of Economics and Business)

Welthandelsplatz 1
1020 Vienna, Austria
T +43-1-313 36-0
wu.ac.at

Arriving by public transport:

Subway: U2 stations "Messe-Prater"
or "Krieau"
Bus: 82A, "Südportalstraße" stop

Regular study programs

wu.ac.at/en/programs/why-wu
bachelor.application@wu.ac.at
master.application@wu.ac.at
phd.application@wu.ac.at

International exchange programs

short.wu.ac.at/international-office
zas@wu.ac.at

WU Executive Academy

executiveacademy.at
executiveacademy@wu.ac.at

WU Alumni

wu-alumni.at
alumni@wu.ac.at

WU ZBP Career Center

zbp.at
office@zbp.at

Marketing & Communications

marketingcommunications@wu.ac.at

FIND OUT MORE ONLINE

WU's Annual Report, published in English, and its German counterpart (Jahresbericht) provide detailed information on WU and recent developments in research and teaching.



Annual Report 2019
annualreport.wu.ac.at/2019/en



Jahresbericht 2019
annualreport.wu.ac.at/2019



WU (Vienna University of Economics and Business)
Welthandelsplatz 1, 1020 Vienna, Austria
wu.ac.at

Arriving by public transport:
Subway: U2 stations "Messe-Prater" or "Krieau"
Bus: 82A, "Südportalstraße" stop