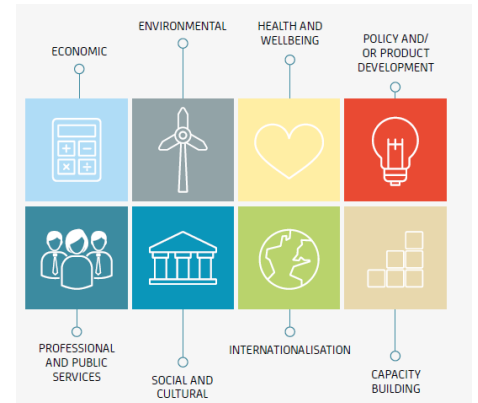


Sustained and Meaningful Involvement in Health Research

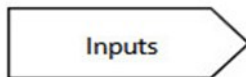
GROUP WORK: AGREEING PROJECT OUTPUTS

Exercise 5

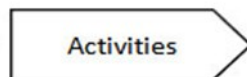


Logic Model Template

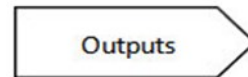
Created by Lori Winqate • Evaluate



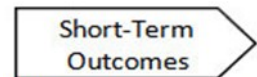
What resources will be used to support the project?



What are the main things the project will do/provide?



How many and what sort of observable/tangible results will be achieved?



What will occur as a direct result of the activities & outputs? (typically, changes in knowledge, skills, attitudes)

Inputs	Activities	Outputs	Short-Term Outcomes