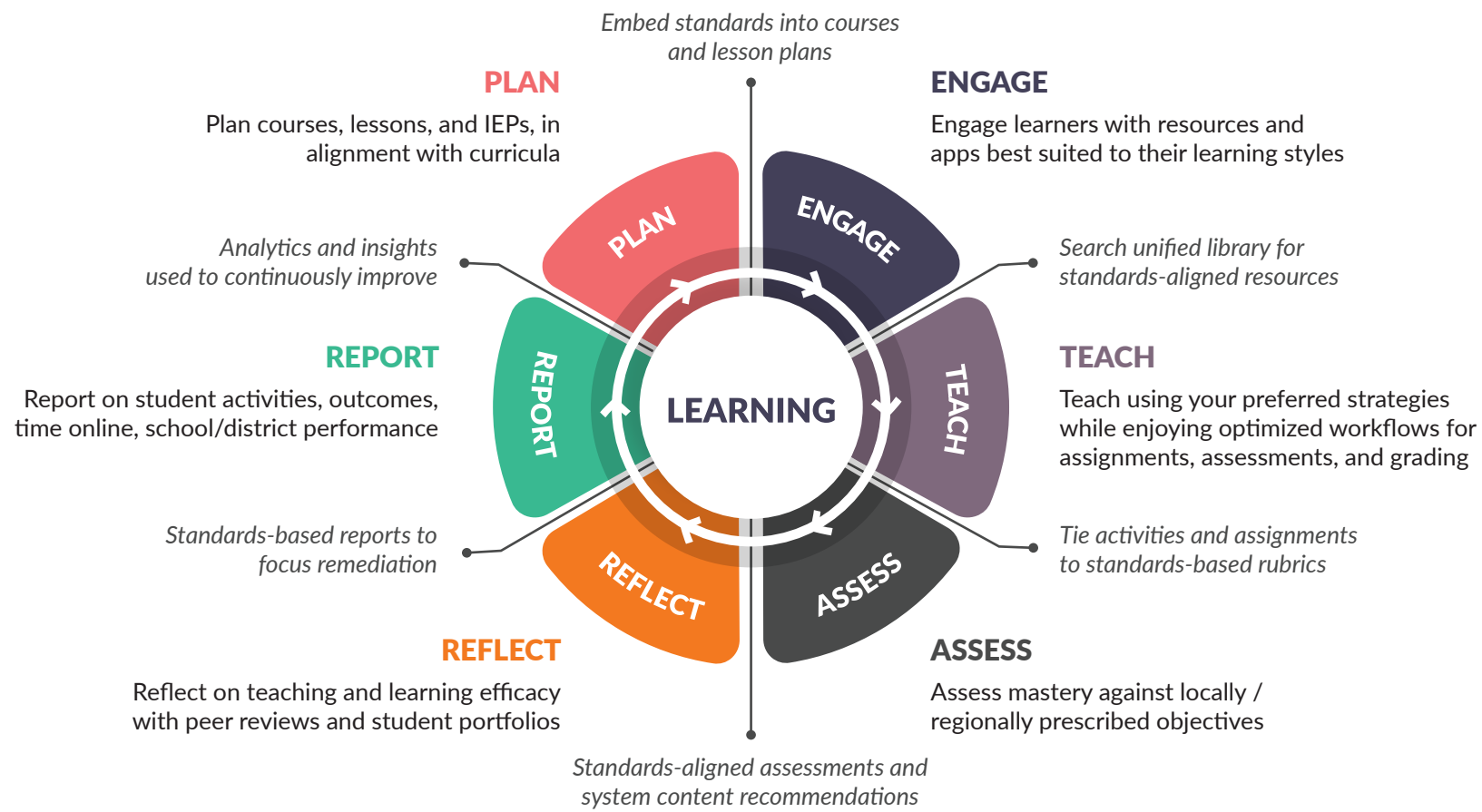
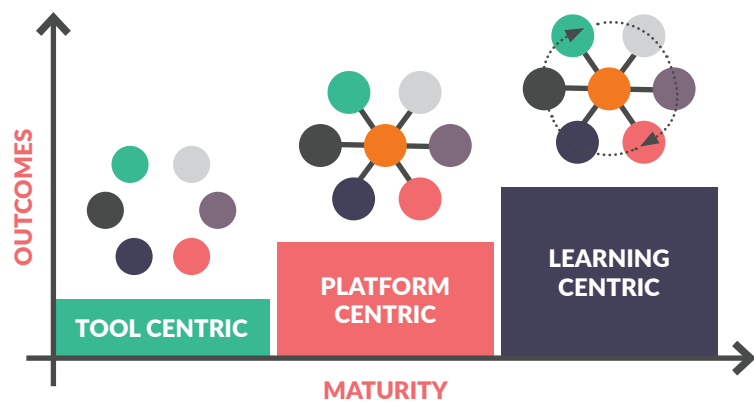


SIDE B - SOLUTIONS & VALUE
Connect & Improve Teaching & Learning Processes



WHAT IS A LEARNING-CENTRIC APPROACH?



Teachers need tools. A lot of them. To plan courses, create lessons, give assignments, and so much more. But this **tool-centric** approach creates too many logins and data silos. It hinders teaching and learning.

A **platform-centric** approach consolidates tools and unifies the user experience. This is better, but it fails to connect data in a way that supports the process-oriented nature of education.

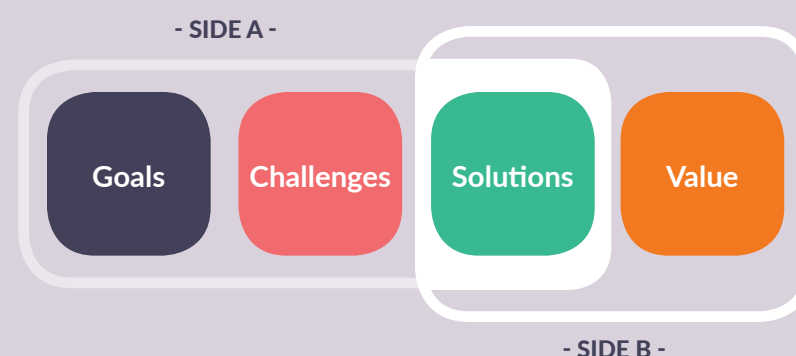
A **learning-centric** approach is best. It surpasses a platform-approach since it uses learning standards to connect, inform, and enhance teaching and learning processes. The result is a cycle of sustained achievement and continuous improvement.

its learning
 AT THE HEART OF EDUCATION

Value Map for Education Technology

To help education leaders align technology deployments with district objectives

How it works...



SOLUTION

VALUE

<p>ALIGN, PLAN, & CREATE Create standards-aligned curriculum (for lessons, courses, groups, and individuals) through learning paths and personalized content.</p>	<p>Improves outcomes of students and performance of district. Saves time for teachers since all educational resources (OER, publisher, district) and searchable within one learning object repository (LOR).</p>
<p>CO-DEVELOP Collaborate with peers to jointly develop courses.</p>	<p>Improves teacher efficacy and opportunities for cross-subject learning. Fosters teacher collaboration and sharing of innovative approaches.</p>
<p>ENCOURAGE COLLABORATION Use groups, collaboration capabilities, and project workspaces for students to work in teams.</p>	<p>Advances 21st century skills of learners. Helps develop teamwork, leadership, and interpersonal competencies</p>
<p>FOSTER EDUCATIONAL OWNERSHIP Motivate students by giving them voice and choice. Use a range of educational tools and apps. Offer a variety of resources in multiple formats (text, audio, video, tests, quizzes) to give options for students to show mastery.</p>	<p>Improves motivation and engagement of students.</p>
<p>CREATE, SHARE, REMIX. Create and share teaching materials with colleagues, the district, or the world.</p>	<p>Improves teaching productivity -- individually and collectively. Supports continuous teacher professional development through sharing of content, ideas, and best practices.</p>
<p>GIVE MEANINGFUL FEEDBACK Provide timely feedback on assignments via annotations, audio, and video</p>	<p>Improves student learning and engagement.</p>
<p>DIFFERENTIATE INSTRUCTION Create and deliver assignments based on individual learning styles. Use linear or adaptive learning paths to provided a tailored learning experience. Offer individualized resources from system recommendations based on student proficiency.</p>	<p>Allows for remediation for struggling learners and acceleration for high-achievers.</p>
<p>COMMUNICATE SECURELY Communicate with parents and students safely and securely at any time from within the learning environment without needing to provide personal contact details. Enable students to flag inappropriate behavior for teacher mediation.</p>	<p>Improves engagement of students and parents while ensuring privacy.</p>
<p>GRADE EASILY Easily grade, annotate, and provide feedback on assignments paperlessly, all from one screen, and with automatic grade pass back sync to SIS. Quickly complete grading tasks by smoothly stepping through each student's submitted work.</p>	<p>Saves teachers time and hassle too since grading can be directly tied to rubrics. Grades are automatically synced with Student Information Systems, eliminating need for and mistakes related to duplicate data entry.</p>
<p>ASSESS FULLY Administer standard-aligned summative and formative assessments.</p>	<p>Improves student learning and engagement.</p>
<p>ENCOURAGE REFLECTION Enable students to self-assess, capture work for future reference and reflection.</p>	<p>Build vital foundational skills for lifelong learning.</p>
<p>UNDERSTAND COMPLETELY Wholly and quickly analyze outcomes of individuals, groups, courses.</p>	<p>Provides insight and improves instruction based on actual performance data.</p>
<p>IMPROVE INDIVIDUALLY Create dynamic improvement plans for individual students.</p>	<p>Improves educational equity and individualized student outcomes.</p>
<p>IMPROVE COLLECTIVELY Roll up school and district performance and understand curriculum adoption. Feed insights into future planning.</p>	<p>Improves teacher efficacy and school/district performance.</p>
<p>REFINE & REUSE Use analytics and course materials from previous year as basis for current year's course plans.</p>	<p>Improves productivity of teachers since they can refine rather than recreate. Improves efficacy of teaching since course work is informed by prior year's experience.</p>

