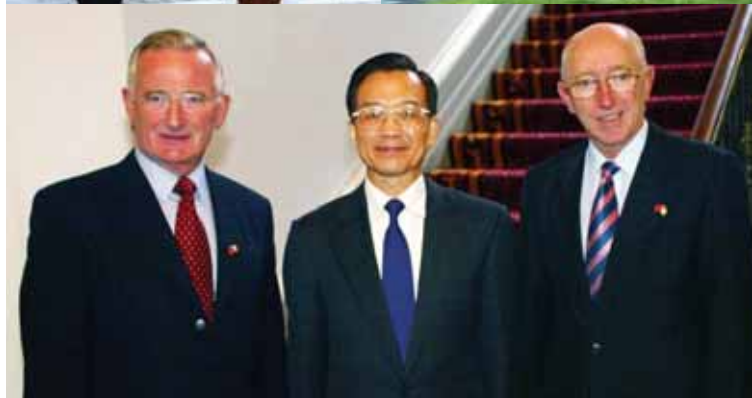


UNIVERSITY of LIMERICK
OILLSCOIL LUIMNIGH

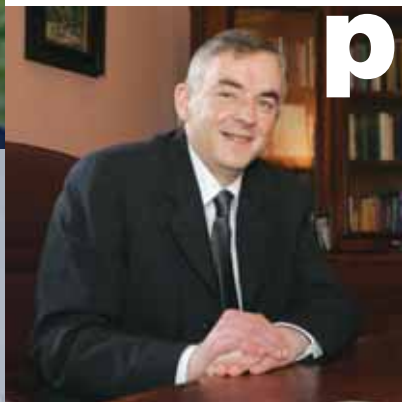
**international
student
handbook**

china



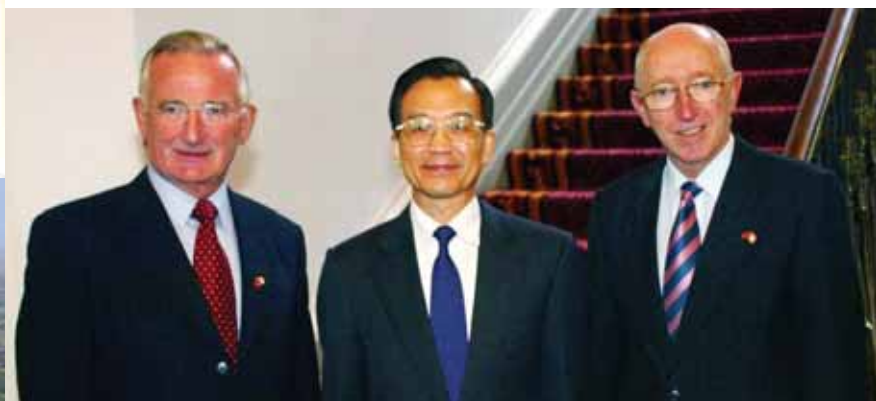


welcome from the president



Professor Don Barry
President

The mission of the University of Limerick (UL) is to be internationally renowned as a distinctive university which shapes the future through educating and empowering people to meet the real challenges of tomorrow. Essential to this mission is the internationalization of the university and the creation of opportunities for international experiences for students in the first instance. It is my great pleasure to invite international students to join us at UL in this exciting transformative endeavour for all of us.



Premier of PRC Mr Wen Jiabao visit to UL with
Prof Roger Downer, President Emeritus UL and
Prof Noel Whelan Vice President External UL



We promote the University of Limerick nationally and internationally as Ireland's most dynamic and innovative university. Through International Education we offer excellent opportunities for academic and personal development of students and staff with the purpose of educating informed and engaged global citizens.

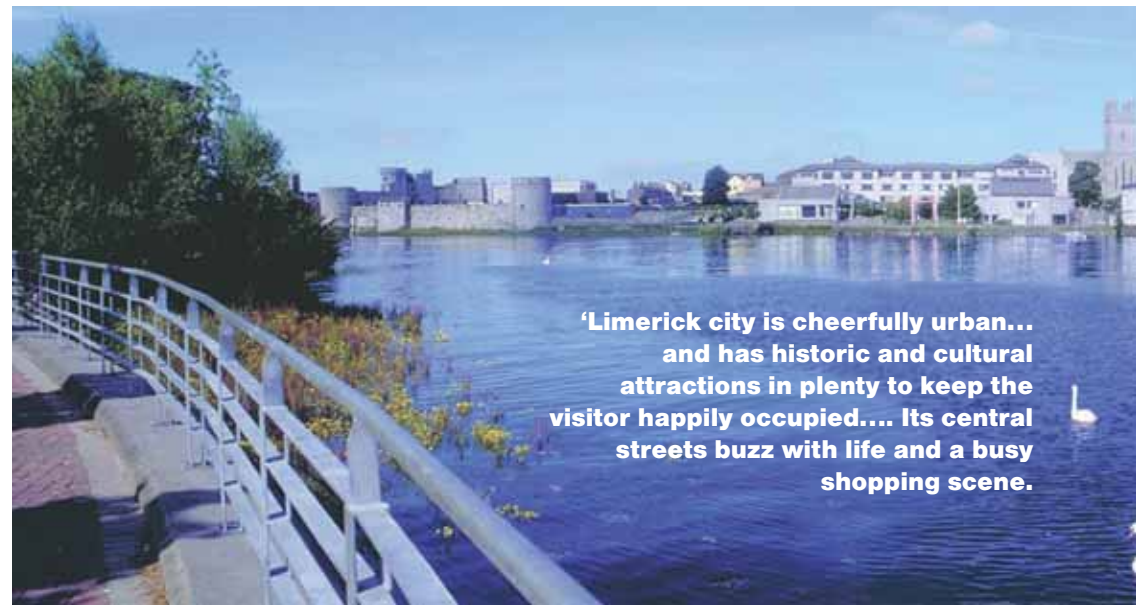
**international
education
division
mission**



ireland



- Ireland is an island of 84,430 sq.km (32, 598 sq. miles), located on the Western European Seaboard.
- English is the primary vernacular and administrative language of Ireland. Irish (Gaelic) is the national language.
- The population of the island of Ireland is approximately 5.7 million people. Limerick is the fourth largest city after Dublin, Belfast and Cork.
- Ireland has a mild climate all year round averaging 2° to 7° C (35° -45° F) in winter, and 18° - 24° C (65° -75° F) in summer.
- Ireland is in the Greenwich Mean Time (GMT) zone.
- The currency of the Republic of Ireland is the Euro.



**'Limerick city is cheerfully urban...
and has historic and cultural
attractions in plenty to keep the
visitor happily occupied.... Its central
streets buzz with life and a busy
shopping scene.**

why limerick?

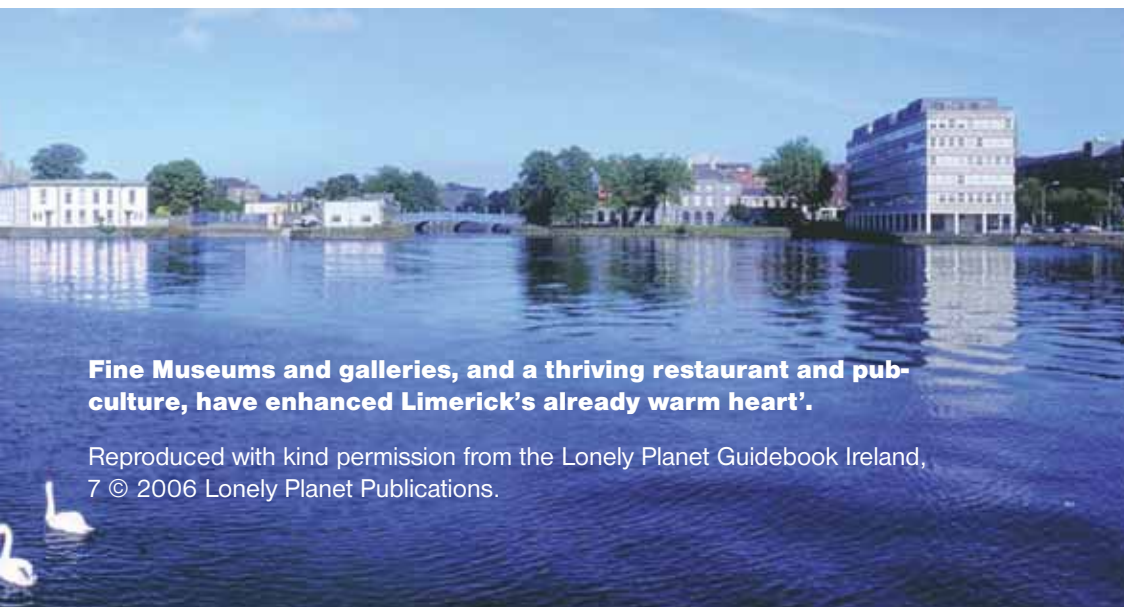
Limerick (population 80, 000) is the third largest city in the Republic of Ireland.

Limerick is easily accessible by air, coach or train. The city is located 20km from Shannon International Airport. There are direct connections between Shannon Airport (SNN) and major cities in the USA, UK and Europe.

Limerick is renowned as a centre of excellence for technology. It is home to the National Technology Park of Ireland and to many international electronics and other high technology firms, including for example Analogue Devices, Dell Computers, Howmedica, Intel and Vistacon.

Limerick offers its visitors an extensive range of attractions, museums and art galleries.

For sporting enthusiasts Limerick offers a wide range of sports from Gaelic games such as hurling and football to Limerick's favourite sport, rugby. It is also home to the National Coaching and Training Centre of Ireland and Ireland's first 50m Olympic swimming pool.



Fine Museums and galleries, and a thriving restaurant and pub-culture, have enhanced Limerick's already warm heart'.

Reproduced with kind permission from the Lonely Planet Guidebook Ireland,
7 © 2006 Lonely Planet Publications.



about the **university** of **limerick**

- There are 7 universities in the Republic of Ireland. Student life in Ireland is highly competitive yet sociable.



- UL is a founding member of the Irish Universities Quality Board, the primary objective of which is to ensure that the quality of Irish Universities continues to compare favourably with best international standards.

- On-campus student accommodation at UL is among the finest in Ireland.



- The University of Limerick is recognised as a pioneer amongst Irish Universities.

- UL believes in combining academic excellence with relevance to economic, social and cultural needs.



- UL is an international centre of excellence in sport, music and the arts.

- The UL campus, astride the majestic river Shannon, is regarded as Ireland's most beautiful university campus.

'Ireland's most dynamic

course organisation

- The primary disciplines in UL are Arts, Humanities & Social Sciences, Business, Education & Health Sciences and Science & Engineering.



- The normal semester course-load is 5 modules (classes/courses), with 3 UL credits awarded for each module and 15 credits for a semester of study.

- Letter grades are awarded for overall performance in assessments for each module.



- UL operates a US-style modular/credit system, with a two semester academic calendar.
- The academic year runs from September to May.



- The UL credit system also accommodates the European Credit Transfer System (ECTS)

- A 4-point scale is used to calculate the Qualitative Cumulative Average (=Grade Point Average).

university'

*An Taoiseach, Bertie Ahern
(Prime Minister of Ireland)*

The collage consists of 12 individual images arranged in a 3x4 grid. The top row shows a person in a red kayak on a lake, a football player in a blue uniform holding a ball, a person climbing a rock wall, and a person performing a handstand on a wooden floor. The middle row features a person rowing a boat, a person playing a drum, a person running on a track, and a person playing a guitar. The bottom row includes a person playing a basketball, a person playing a soccer ball, a person playing a tennis racket, and a person playing a volleyball.

A collage of 12 images showing various physical education activities and outdoor scenes. The images include: a person kayaking on a lake, a football player holding a ball, a person climbing a rock wall, a person performing a handstand on a wooden floor, a person running on a track, a person playing a drum, a person playing a guitar, a person playing a basketball, a person playing a soccer ball, a person playing a tennis racket, a person playing a badminton racket, and a person playing a table tennis racket.

A collage of 12 images showing various physical education activities and outdoor scenes. The images include: a person kayaking on a lake, a football player holding a ball, a person climbing a rock wall, a person performing a handstand on a wooden floor, a person running on a track, a person playing a drum, a person playing a guitar, a person playing a basketball, a person playing a soccer ball, a person playing a tennis racket, a person playing a volleyball, and a person playing a badminton racket.

sports

The facilities for sports at UL are state of the art and compare favourably with the best internationally. Membership is open to all students, who are actively encouraged to participate in sports while attending the University of Limerick.

UL is the national centre for the education of teachers of Physical Education in Ireland and is also home to the Irish National Coaching and Training Centre for elite sportspeople and athletes.

The University Arena is a multi-purpose sports facility with:

- 50m Swimming Pool
- 4 courts - offering Basketball, Volleyball and Indoor Soccer
- 60m Indoor Sprint Track
- 3-Lane Suspended Jogging Track
- Cardio-Fitness Centre

outdoor**facilities**

- Athletics Track
- 40 acres of playing fields
- Tennis courts
- Outdoor Activity Centre

(<http://www.rhw.ul.ie/universityarena/>)





plassey**village**

Plassey Village is a great place to make friends. The terraced houses which sleep 8 people are grouped around landscaped courtyards which help to create a cosy communal atmosphere. Shops are located only 5 minutes walk from the village and a regular bus service to the city centre operates every 20 minutes from a stop directly opposite the village.

kilmurry**village**

Kilmurry Village is a complex of terraced houses in landscaped grounds close to the Sports Arena. A great place to live if you want to be on the track or in the pool before breakfast. Tennis courts and playing fields are located adjacent to this village. Houses sleep 6 and 8 students while living room/kitchens are spacious. The Village has its own convenience shop, laundrette and a large community hall.

cappavilla**village**

Cappavilla is an attractive apartment style residence located on the North Campus. Built on the highest point of the campus, the views of the surrounding countryside and the river Shannon are superb. Offering 2/4/6 bedroom apartments, all en suite, the village has its own laundrette and games room.

thomond**village**

Thomond Village is located on the North Campus which is linked by means of a spectacular bridge across the river Shannon. Thomond Village offers 2/4/6 bedroom apartments with stunning views of the river Shannon or the Errina Canal. All bedrooms offer en suite bathrooms.

dromroe**village**

Dromroe Village is an attractive apartment style complex, bordering a millstream and overlooking the river Shannon. It offers apartments to sleep 2/6 in large individual bedrooms, all with en suite facilities. The village has a communal hall with seminar rooms, a good convenience store, a laundrette and Ciaran's juice bar café.



- Regardless of which village you choose you will have your own private study bedroom equipped with a good size desk and access to high speed connection to the internet through the university network.



- En suite bathrooms are available in the newer apartment style residential villages which afford greater privacy and where you can still enjoy the camaraderie of sharing with others.

- Living on campus gives you the opportunity to meet people from all over the world; you learn about other cultures, share different foods, music and stories.



- Living on campus makes it easy to access the library as students are on site and can return there after their evening meal.



- A Village Manager is on site in all villages to ensure a safe, comfortable environment exists for all.



- As well as the facilities in each village, the Student Centre, at the heart of the campus, is within easy walking distance of each village.

- A programme of activity known as the Campus Life Programme is organised in each village which offers 'get to know your neighbour' nights, dance, yoga and cookery and talks on healthy eating, nutrition and fitness.



- It's easy to book; you can reserve a room on campus by visiting www.ul.ie/campuslife. Simply follow the online instructions.

For further information and application forms please contact:

Deidre Ryan, Campus Life Services,
Plassey Campus Centre Ltd.,
University of Limerick

Telephone: + 353 61 202331

Fax: + 353 61 202188

Email: Deidre.ryan@ul.ie

Web: www.ul.ie/campuslife





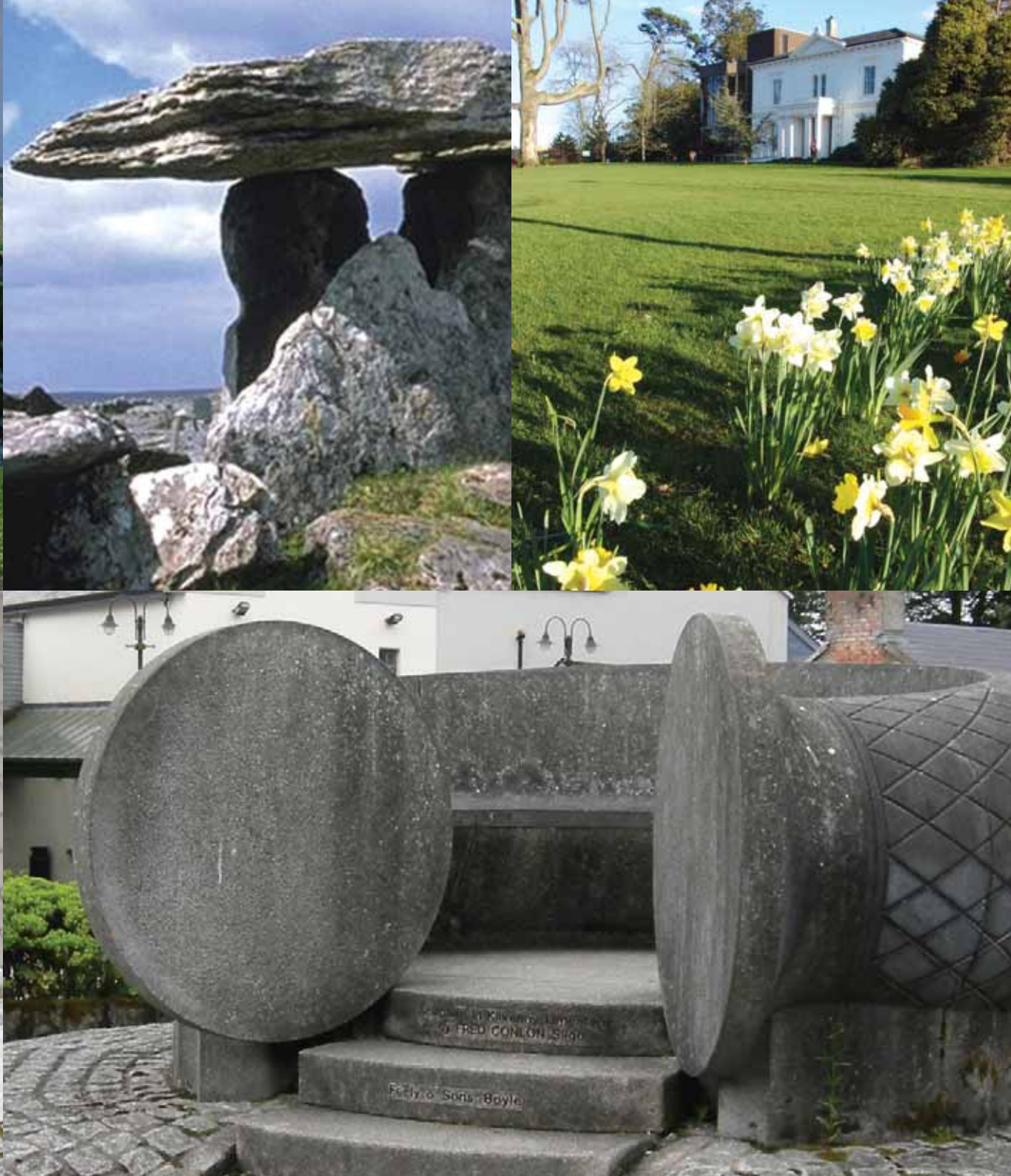
‘our vision is to offer students an **academic** environment
that supports intellectual **growth** and personal
development and is characterised by principles of
fairness, equity and **integrity**,



information for **chinese** **students**

The University of Limerick (UL) invite applications from Chinese students for undergraduate and postgraduate programmes in all colleges of the university. Interested students can apply directly to UL or through a number of education agents retained by the UL in China. The International Education Division at UL currently work with established education agents in Beijing, Shanghai, Nanjing, Xi'an, Shenyang and further representation throughout the Peoples Republic of China' For a full list of education agents retained by UL please contact int.ed@ul.ie.





- The University of Limerick (UL) and all Irish Universities award their own degrees and these degrees are recognised internationally
- UL is a highly competitive institution providing an excellent quality of education

why study_{in} limerick?

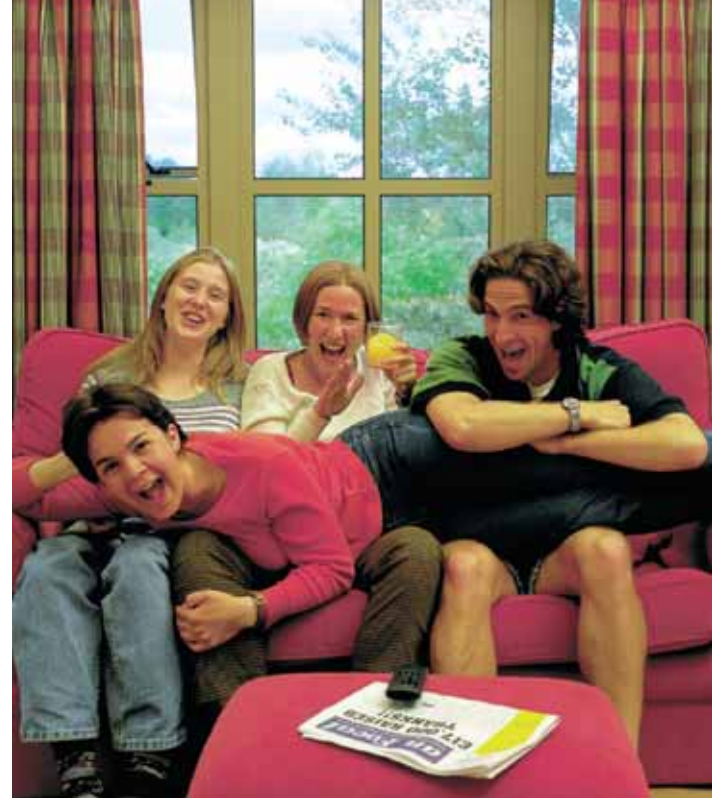
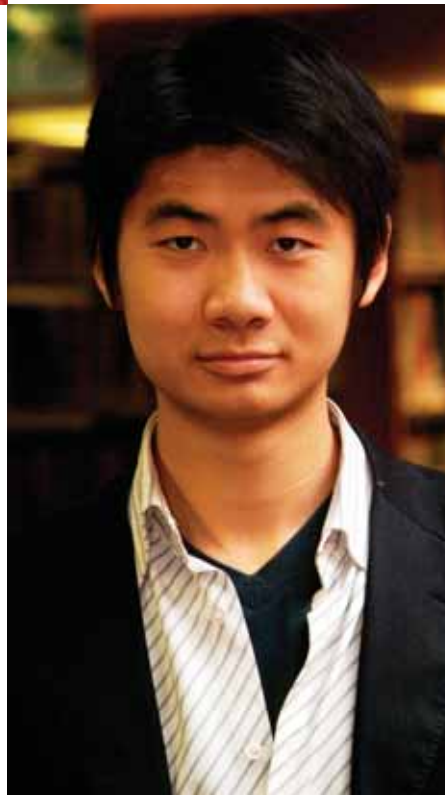
- UL is a pioneer in Irish third level education
- Cooperative Education placements are organised for all full time undergraduate students
- On-campus accommodation facilities are superb
- UL is an international centre of excellence in sport, music and the arts
- UL has a great location near Limerick City, and Ireland's most beautiful campus, on the banks of the River Shannon, 30 minutes drive from Shannon International Airport



undergraduate programmes

The Undergraduate Prospectus is available at www.ul.ie/admissions

UL offer 66 four-year primary degree programmes and one five-year programme in the following areas, Arts, Humanities & Social Sciences, Business, Education & Health Sciences and Science & Engineering. The academic year runs from September to May and intending students may apply on-line or directly to the International Education Division, University of Limerick, Limerick, Ireland.



Undergraduate entry requirements

Admission is based on 12 years academic preparation.
Senior High School Diploma with good results.

Final examinations should include English language, Mathematics and one other language. There are further subject requirements for specific courses.

entry requirements

Postgraduate entry requirements

A four-year degree from a recognised competitive university with high results, in a discipline relevant to the postgraduate degree sought, is required for entry to a Masters Degree programme.

Queries on the equivalence of overseas qualifications can be directed to int.ed@ul.ie with full information on the qualifications held.

Entry to UL is based on competition between applicants for available places; meeting the minimum requirements does not guarantee a place.



co-operative education programme

A unique feature of academic life at UL is the Cooperative Education Programme (undergraduate work placement) which involves placement of all students in employment relevant to their academic interests for a minimum of seven months. This is organised by the University and students may be paid for the period.

- Internships are for one semester + one summer and are related to the area of study
- Approximately 2,000 students are placed annually by UL
- The placements are not just located in Ireland but are worldwide
- Students generally get paid for these placements



co-operative education & careers

UL has a network of over 1,500 employers/corporations, located in Europe, the USA, Canada, Latin America, Asia and Australia, which provide valuable work experience for 2,000 undergraduates annually, as part of UL's Co-operative Education Programme.

Almost 90% of UL graduates in recent years were employed or in further study in the year following graduation.

UL graduates have consistently enjoyed higher starting salaries in employment than graduates of other Irish universities



The Postgraduate Prospectus is available at
<http://www.graduatestudies.ul.ie/prospectus/main/>

postgraduate programme

UL offer programmes in education and research to masters and doctorate level in the following areas: Arts, Humanities & Social Sciences, Business, Education & Health Sciences and Science & Engineering.

As part of the University's overall research strategy, a number of areas have been prioritised for academic excellence and relevance to industry and society. These are: Information and Communication Technologies, Biosciences and Bio (medical) Engineering, Materials and Surface Science Work, Productivity and Quality, Humanities and Social Sciences

The University provide a range of specific taught and research programmes that link into these general themes.

taught postgraduate **entry** **requirements**

Applicants are required to hold a four-year or a three-year honours degree in a relevant discipline from a first level university for entry to a Masters programme. First division results are required with a minimum of 70% overall grade. Students are also required to meet the University's English language requirement.

postgraduate **research**

Full details on research possibilities available at www.research.ul.ie

Postgraduate research applications are processed throughout the year. For further information please contact Frances McCann (frances.mccann@ul.ie)



how to apply: undergraduate applications

- Applicants should submit the following:
- Fully completed and signed application form
 - Transcripts for Gaokao (with English translations where necessary)
 - Certificate of level of proficiency in English

how to apply: postgraduate applications

- Applicants should submit the following:
- Fully completed and signed application form
 - Transcripts and Degree award (with English translations where necessary)
 - Proof of level of proficiency in English.
 - 2 academic references
- There is no application processing fee.

Students can apply directly to the International Education Division on-line or download a paper application form at the following address:

Undergraduate: http://www.ul.ie/internationaleducation/how_to_apply_undergrad.php

Postgraduate: http://www.ul.ie/internationaleducation/how_to_apply_postgrad.php

Queries on the equivalence of Chinese qualifications can be directed to Coordinator, International Education, email int.ed@ul.ie with full information on the qualification held.



application **deadline**

The application deadline is July 1st for September entry. Application processing time for complete application forms is 5-8 working days. Completed application forms should be returned to the International Education Division, University of Limerick, Ireland. Early application is strongly advised and conditional offer letters can be issued in advance of completion of the Gaokao examinations or Bachelor Degree.

health **insurance**

Non-EU nationals are required to hold medical insurance for the duration of their first year of study in Ireland. Students may extend medical policies from their home country to cover the period of study in Ireland or, alternatively, policies are available from the following Irish health insurance companies;

Voluntary Health Insurance: www.vhi.ie

Quinn Group: www.quinn-healthcare.com

Vivas Health: www.vivashealth.ie

Jia Xu

BSc information
technology &
telecommunications
2005



My name is Jia Xu, I am from Shanghai and I graduated from the University of Limerick with a degree in Information Technology and Telecommunications, College of Electronic and Computer Engineering, in 2005. Before my graduation I had secured a graduate position with Dell Computers – one of 12 in the Dell Graduate programme 2005. I am finding my work with Dell rewarding and I am putting the skills and knowledge I gained at UL into practice.

My four years study in University of Limerick can be summarised as: learning leading technologies; taking challenging projects; communicating and travelling worldwide. I also undertook 8 months of practical IT experience. UL has provided me with a wide range of transferable skills; flexible nature; problem solving, confidence and self-motivation. My first joint paper was published in Japan's NTCIR conference in December 2005.

University of Limerick has the most beautiful campus in Ireland with a host of talented professors and researchers, including some world leaders. I am planning to return to UL to pursue a research masters degree, and really look forward to being a member of the UL family again!



Ting Wang

M.A.
in
international
tourism
January 2008

I really enjoy the study-trips in and out of Ireland arranged by our department and the university. It offers plenty of chances for us to directly talk to diverse operators of the tourism industry in different countries during the trips, and we are highly encouraged to think from an international perspective. As a Chinese student, I usually share my thoughts with Irish classmates and other international students.

A lot of interesting cultural differences are discovered from discussion. Studying in UL opens my mind and inspires me to learn more in my field.

visa applications

Chinese applicants are advised to contact the Embassy of Ireland for the most up to date information on student visa requirements:

Embassy of Ireland

3 Ritan Dong Lu, Beijing 100600, People's Republic of China

Telephone: (+86 10) 6532 2691 or 6532 2914

Email: beijingembassy@dfa.ie

Fax: (+86 10) 6532 6857

General Visa Requirements

- Completed visa application form
- Valid Passport
- Date, Place and mode of arrival in Ireland
- Letter from the University of Limerick indicating that a place has been offered
- Letter indicating the source of funding to cover fees and maintenance
- Recent passport photographs (4)
- Proof of private medical insurance
- Proof of English language competency (IELTS/TOEFL)
- Visa application fee
- Proof of payment of tuition fees*

workingⁱⁿ ireland

Students registered on a full-time course leading to a recognised qualification are entitled to work in Ireland on a part-time basis i.e. up to twenty hours per week and full-time during holiday periods. Students are required to have a PPS number in order to work and this can be obtained upon arrival in Limerick.

*see website for further details <http://www.embassyofireland.cn/>



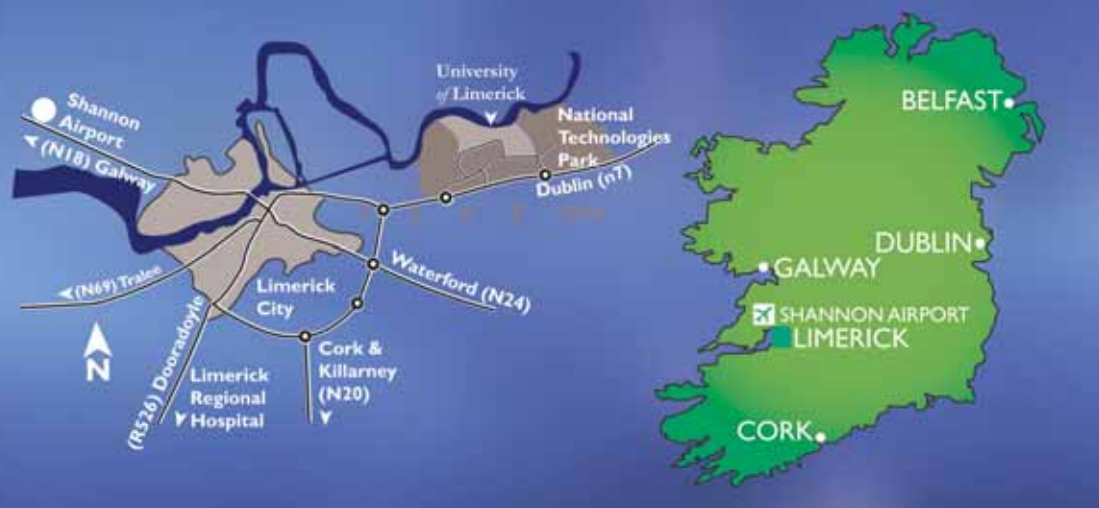
english language requirements

Applicants from non-English speaking countries must show proof of a high level of competence in English as part of the application. A number of English language qualifications are accepted by UL. These include TOEFL and IELTS:

TOEFL: A minimum score of 550 (paper based) or 213 (computer-based) or 80 (internet based) in the TOEFL test;

or

The British Council/University of Cambridge Local Syndicate's test of Academic English, 'International English Language Testing System' (**IELTS**) with a composite score in the range of 6-6.5 and not less than 6 in any one component, for entry to degree programmes in Science, Engineering and Informatics & Electronics; and a composite score in the range of 6.5-7 and not less than 6 in any one component, for entry to degree programmes in Business, Education and Humanities.



International Education Division

University of Limerick, Limerick, Ireland

Tel: +353 61 202414

Fax: +353 61 213062

Email: int.ed@ul.ie

Website www.ul.ie

