



UNIVERSITY of LIMERICK
OLLSCOIL LUIMNIGH

art¹ trail



WELCOME

The University of Limerick is privileged to be the custodian of some of the nation's finest and most diverse art collections. These include outdoor sculptures which are located throughout the campus and collections such as the National Self-Portrait Collection of Ireland and The Water Colour Society of Ireland National Collection.

Most appropriately the University is enhanced by the noble River Shannon, which runs through the campus. The University's architecture, landscape design and sculptures have been planned to create an integrated environment. It is an inspiring setting, and the sculpture and art trails are designed to help you enjoy your visit to our Campus.

These Collections are living and continually growing due to the generosity of our many benefactors. We hope this map encourages you to explore the scenic grounds and buildings of our campus.

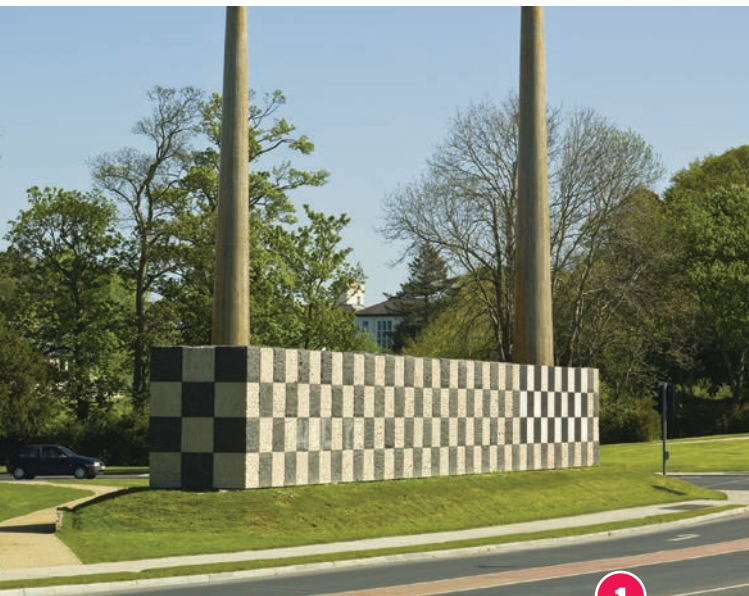
Professor 

President, University of Limerick



UNIVERSITY *of* LIMERICK
OLLSCOIL LUIMNIGH

OUTDOOR SCULPTURES



1

Crann Soilse

SEAN SCULLY

Wall of Light - Portuguese Limestone (white) and
Chinese Basalt (black)
30.5 x 3 x 2.5 m

Located at Main Entrance



2

Geometric Forms

ALEXANDRA WEJCHERT

Polished stainless steel and consists
of six identical elements connected at
the centre. Each of the semi-crescent
elements is cut from a 6 mm flat plate
with the edges stiffened by 200 x 100 mm
plates welded to it.
7.0 m x 4.5 m

Located at the front of the
Robert Schuman Building



3

Together and Apart

ANTONY GORMLEY

Cast iron sculpture
700 kg, 189 x 48 x 24 cm

Located at the Central Plaza



4

Silver Pencils

PETER LOGAN

Kinetic sculpture.
Polished aluminium with
stainless steel shafts - 7.64 m

Located at the Reflecting
Pool, Foundation Building

OUTDOOR SCULPTURES

Salmon Fall

MICHAEL WARREN

Burnt oak and French
white limestone
350 x 800 x 600 cm

Located on grounds in front
of Plassey House

5



6

Swimmers

LOUISE WALSH

Cast figural patinated bronze in three pieces, set in cement

Located in Kilmurry Village



7

Resurgence

JAMES MCKENNA

Limestone

Located to the left of the Schrodinger Building



8

Sundial

KEN THOMPSON

Limestone

Located between the Stables Courtyard and the main building

OUTDOOR SCULPTURES



9

Leaf Litany

TOM FITZGERALD

Bronze tube and sheet,
limestone, lead
8 x 3 m

Located outside the
Glucksman Library

Gate Masts

SHANE DE BLACAM

Laminated solid wood
polished and varnished.
The base is fitted with
steel plates bolted
through the curved stone
base to piled foundations.
25 m high x 1 m base to
200 mm top

Located on grounds,
main entrance to
campus

10



OUTDOOR SCULPTURES

- 1 Crann Soilse
- 2 Geometric Forms
- 3 Together and Apart
- 4 Silver Pencils
- 5 Salmon Fall
- 6 Swimmers
- 7 Resurgence
- 8 The Sundial
- 9 Leaf Litany
- 10 Gate Masts

CAMPUS ART

- 1 Desmond Kinney Mosaic
- 2 Helen Hooker O'Malley Roelofs Sculpture Trust
- 3 The University of Limerick Mace
- 4 Chancellor's Walk
- 5 The National Self-Portrait Collection of Ireland
- 6 The Water Colour Society of Ireland National Collection
- 7 The Irish American Cultural Institute's O'Malley Collection
- 8 The Armitage Collection
- 9 The University of Limerick Art Collection
- 10 Loans and Donations
- 11 The Conlan Collection of Irish Coins, Tokens and Ring-Money
- 12 Bourn Vincent Gallery

UNIVERSITY OF LIMERICK CAMPUS

- 1 Main University Entrance
- 2 East Gate Entrance
- 3 Carlton Castletroy Park Hotel
- 4 Plassey Student Village
- 5 International Science Centre
- 6 Robert Schuman Building
- 7 International Business Centre
- 8 Computer Science Building
- 9 Silver Apples Crèche
- 10 Glucksman Library and Information Services Building
- 11 Foundation Building and University Concert Hall
- 12 Engineering Research Building & Millstream Courtyard
- 13 Main University Building
- 14 Plassey House and University Close
- 15 Visitors Centre & University Shop
- 16 Student Centre, Shops, Banks, Bars
- 17 Kathleen Lonsdale Building
- 18 Materials and Surface Science Institute
- 19 Sports Building and Coaching Ireland
- 20 Schrodinger Building
- 21 Grounds/Maintenance Compound
- 22 University Arena including 50 metre Pool
- 23 The Sports Club
- 24 Kilmurry Student Village
- 25 Horticultural Unit
- 26 Dromore Student Village
- 27 Boathouse
- 28 Kemmy Business School
- 29 Tierney Centre
- 30 Languages Building
- 31 The Living Bridge
- 32 Health Sciences Building
- 33 Irish World Academy Building
- 34 Medical School Building
- 35 Medical School Residences
- 36 Sports Pavillion
- 37 Irish Chamber Orchestra Building
- 38 Cappavilla Student Village
- 39 Thomond Student Village
- 40 President's House
- 41 Analog Devices Building



UNIVERSITY of LIMERICK
OLLSCOIL LUIMNIGH

1 Desmond Kinney Mosaic

Síonna, an Irish Goddess of great beauty, went seeking the hazelnuts of wisdom. She knew that the hazelnuts contained the secret of poetry that was called éigse. She found a deep pool with hazel trees growing around it. The trees were ripe

with hazelnuts and Síonna watched as the nuts broke from the branches and dropped into the pool, breaking open to reveal a rich purple stain. The salmon of wisdom feasted on these hazelnuts, causing dark red freckles to appear on their silvery skin. With a deep desire to catch the hazelnuts she leaned forward, lost her footing and toppled into the pool. The hazelnuts entangled, twisted and matted her long flowing hair like the eddies and currents of the pool. The unstoppable had happened once the mirror of the pool's surface had been broken. The terrible beauty of the Goddess Síonna shimmered and pulsed across the pool, driving into the red earth and throwing up banks on either side as she raced across the sacred land of Éire toward the sea, beginning the great river that bears her name. Located in the Irish World Academy.



2 Helen Hooker O'Malley Roelofs Sculpture Trust

Helen Hooker O'Malley Roelofs' consuming passion was her art. Among the many art forms she explored, sculpture ranked the highest. She constantly revised her lists of people yet to be sculpted, and, in all, she completed about 350 heads and figures. A selection of these works is held in the Glucksman Library.



3

The University of Limerick Mace

Stirling Silver, hallmarked, engraved, decorated. Overall length: 110.5 cm

Located in Plassey House

The mace was designed by Thomas Ryan PPRHA, engraved by Douglas Bennett and the silversmith is Peter Donovan. It is composed of 8 parts, all of which have been hallmarked. The body of the mace hosts a figure of a scholarly monk who holds a book and a staff. The canopy caps the body of the mace. There are three applied symbols on the canopy, and the surface is otherwise undecorated. The symbols consist of an Irish harp, the University Crest with motto and the castle towers on either side of a barred entrance.



4

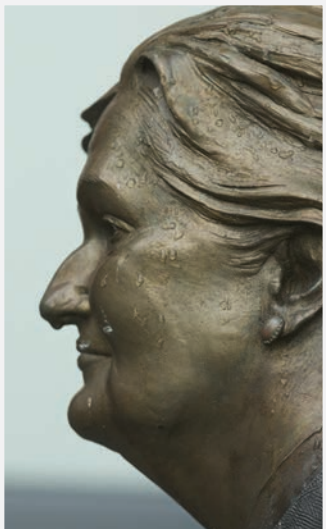
Chancellor's Walk

CAROLYN MULHOLLAND

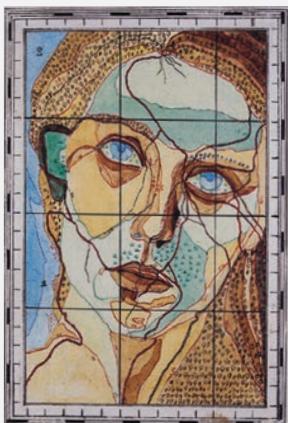
Miriam Hederman O'Brien
Chancellor 1997 - 2002

Located at the
Millstream Courtyard

Sculpture has become an integral part of the landscape at the University of Limerick. There is nowhere better to encounter the bronze guardians of the University than Chancellor's Walk, the new heart of the campus.



CAMPUS ART



KATHY PRENDERGAST (1958-)

Untitled

pen and watercolour on paper

24.5 x 18 cm

5 The National Self-Portrait Collection of Ireland

Located in Plassey House and the Foundation Building

The National Self-Portrait Collection of Ireland began in 1977 when 15 self-portraits were purchased from the late John Kneafsey. The current collection has over 400 self-portraits, mostly two dimensional, but the more recent additions have been influenced by multimedia and new technology.

6 The Water Colour Society of Ireland National Collection

Located in the Foundation Building

ANGEL BRUTON

Open at eight, 2005
watercolour on paper
25 x 35.5 cm



The Water Colour Society of Ireland owes its origin to a local drawing society which was founded in 1870 and held its first exhibition in the Courthouse, Lismore, Co Waterford in May 1871. The Society was founded by six ladies with the object of mutual improvement in painting and drawing and the cultivation of a taste for art. In 1878 it changed its name to the Irish Fine Art Society, a title it retained until 1888 when it became the Water Colour Society of Ireland. Since 1993 the University of Limerick has been home to the permanent collection.

7 The Irish American Cultural Institute's O'Malley Collection



Located in Plassey House

LOUIS LE BROCQUY (1916-)
Red Roses for Me, 1946
watercolour and ink on paper
12.7 x 22.9 cm

The Irish American Cultural Institute's O'Malley Collection of early 20th century Irish paintings includes works by Jack B Yeats, Mainie Jellett, Paul Henry and Evie Hone. The collection was constructed by Helen Hooker O'Malley with her husband Ernie, both passionately committed to the arts and culture. Helen donated her collection to the IACI with the hope that it would be of educational and cultural benefit to Ireland. The IACI found a very grateful home for the collection at the University of Limerick.

8 The Armitage Collection



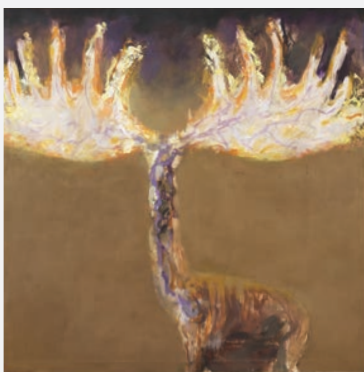
Edward Armitage (May 20, 1817 - May 24, 1896) was an English Victorian painter whose work focused on historical, classical and biblical subjects. These fifteen works are on loan to the University of Limerick from the Armitage DeWilton Family.

Alice Stanley Armitage (1869-1949) was the niece of Edward Armitage and the daughter of Thomas Armitage, who founded the Royal National Institute for the Blind in England. Alice Stanley Armitage was the founder of the National Council for the Blind of Ireland.

EDWARD ARMITAGE (1817 - 1896)
Portrait of a Lady
(Alice Armitage)
oil on canvas, 129 x 77 cm

9

The University of Limerick Art Collection



BARRIE COOKE

Elk, 1984
oil on canvas
142 x 142 cm

The University's Art Collection consists of over 400 works including paintings, drawings, sculptures and prints. The

collection focuses on contemporary Irish art and dates from the foundation of the University. The collection was established with the principal aim of enhancing the buildings and grounds of the campus and the cultural experience of the students and staff alike.



JACK B YEATS
(1871-1957)

Shouting 1946
oil on canvas

10

Loans and Donations

The University of Limerick would like to thank all its private contributors involved in the loan of artworks to the University. We are extremely grateful. It is thanks to such civic-minded individuals that the University can share these inspirational artworks with the campus community and public at large.

The University of Limerick obtained Gallery Status from the Irish Revenue Commissioners on 31st January 2007.

11

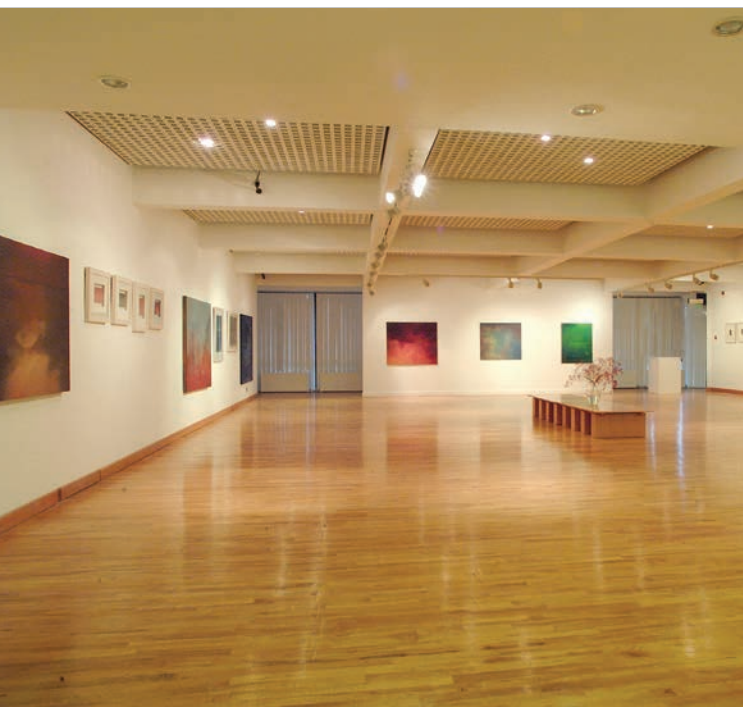
The Conlan Collection of Irish Coins, Tokens and Ring-Money

Located in Special Collections, Glucksman Library

This collection illustrates the history of the Irish coinage of the period from 1015 to 1826. It is the work of Father Patrick Conlan, who formed it with great care during the 1970s and 80s. Its contents and scope reflect exemplary scholarship, a keen eye for quality, and a determination to acquire coins that would each illustrate a specific phase and period of Irish numismatic history, particularly with reference to Limerick. The collection also contains two examples of the worked-metal pieces - what are generally referred to as ring-money - that may have had a symbolic use as much as a monetary value in prehistoric Ireland. A representative set of tokens, each with a notional monetary value and used for the exchange of goods by various businesses and institutions in the early modern period, completes the collection.

This collection is one of the many rare treasures located in Special Collections at the Glucksman Library, University of Limerick.





12 Bourn Vincent Gallery

The William and Elizabeth Bourn Vincent Gallery was opened on 21 September 1993. The creation of this art gallery by the University represents the coming of age of a policy which has sought to encourage the exhibition of noteworthy examples of visual art.

The gallery is named after the Bourn Vincent family who, in earlier centuries, played a prominent role in the civic life of Limerick City, including contributing six mayors between 1703 and 1803. Their extraordinary acts of generosity to this country may not be widely known but they have rarely been surpassed, and it is appropriate that this gallery bears their name.



UNIVERSITY of LIMERICK

OLLSCOIL LUIMNIGH