

Mature Student Guide 2024

Entry & Access
Pathways to UL



UNIVERSITY OF
LIMERICK
OLLSCOIL LUIMNIGH

Rannóg Ghnóthaí
Mac Léinn

Student Affairs
Division

All enquiries in relation to admission of students on undergraduate programmes should be addressed to:

Academic Registry
University of Limerick
Limerick
Ireland



+353 61 202015



<https://www.ul.ie/academic-registry/about/contact-us>



<https://www.ul.ie/academic-registry/>

NOTE: The contents of this guide are for information purposes only and should not be viewed as the basis of a contract between a student and the University. No guarantee is given that courses, fees or regulations may not be altered, cancelled, or otherwise amended at any time.

Mature Student Guide **2024**

Entry & Access
Pathways to UL



UNIVERSITY OF
LIMERICK
OLLSCOIL LUIMNIGH

**Rannóg Ghnóthaí
Mac Léinn**
Student Affairs
Division

we extend
a warm
welcome



Table of Contents

1	WELCOME	5
2	IMPORTANT DATES FOR ENTRY IN 2024	6
3	MATURE STUDENTS IN UL	8
	Mature Student Office	8
	Who is considered a Mature Student?	10
	What can I apply for?	10
	Where can I get information on courses?	10
	What are the entry requirements?	10
	How many Mature Students are in UL?	11
	When do courses start?	11
	What level of commitment is required?	11
	Welcome Programme for Mature Students	11
	Information for Mature Student parents	13
4	PREPARATORY PROGRAMMES FOR MATURE STUDENTS	15
	Mature Student Access Certificate	16
	Maths for STEM Certificate	18
	QQI / Further Education Programmes	19
	Other Access Courses in Limerick	20
5	MAKING AN APPLICATION	22
	Initial steps to consider	23
	How to apply	26
	Writing a personal statement	27
	How are applications assessed?	27
	Can I defer my place?	29
6	COSTS AND FINANCIAL SUPPORTS	30
	Programme fees	31
	Cost of living	32
	Financial support	32
7	APPLICATION AND INTERVIEW ASSESSMENT CRITERIA	37
8	LEARNING AND SUPPORT SERVICES IN UL	76
9	MATURE STUDENT PROFILES	77
10	TOP TIPS FROM UL MATURE STUDENTS	84



Welcome to the University of Limerick

UL is committed to **improving access to higher education for adults** and we welcome applications to all of our undergraduate programmes from mature student applicants.

Mature students on full-time undergraduate programmes are typically students who commence higher education studies, for the first time, when they are aged 23 or over. Many adults choose to study in college as mature students for a variety of reasons. Some are motivated by an interest in career development or in new employment opportunities, while others are interested in their own personal development, or in fulfilling a lifelong ambition by undertaking third-level study. Whatever your own motivation, background or experience, mature students are hugely welcomed and valued by everyone in UL.


Many of you will be juggling various roles as you take on yet another one - that of mature student. Many of you will have been away from formal study for an extended period of time. Your task may appear daunting and we will do our very best to assist you by providing a supportive environment. This guide is intended as a short information guide for mature students who are thinking of beginning third-level study. It details some of the supports which are available in UL, as well as giving information on how to go about applying to UL, helping you to make an informed decision about third-level education.

Again, a very warm welcome is extended to you. It is my sincerest wish that if you do decide to come to UL that your experience here will be an enriching and rewarding one, and that ultimately you will achieve your own personal goals and will enjoy an exciting and fulfilling learning journey.

SHIRLEY RYAN

Mature Student Officer

 EM021, Main Building, University of Limerick

 061-213481

 Shirley.Ryan@ul.ie

 www.ul.ie/mso

 Twitter @MSO_UL

Important dates for entry in 2024

IMPORTANT DATES IN BOTH THE CAO APPLICATION & UL ASSESSMENT PROCESSES:

1

Register with CAO between **6th November 2023 and 2nd February 2024**.

3

Remember to place your course choices in genuine order of preference.

5

If applying for **Nursing & Midwifery programmes**, you must go to www.nmbi.ie/Careers-in-Nursing-Midwifery/How-to-apply/Mature-Applicants for further information on how and when to register for the written assessment. **Dates for testing can be held during a defined period between April and June.**

7

Late applications by mature students for some courses in UL may be made through the CAO up to **1st May 2024**. Check with the Admissions Office for programmes which accept late applications. *Note exceptions in Step 2.*

**2**

Input your course choices using the 'My Application' facility **before 1st February 2024 at 5.15pm**. Please check <https://www.ul.ie/academic-registry/prospective-students/applying-UL/mature-students> to see if the below courses are accepting late applications:

- LM089 Sport & Exercise Sciences
- LM100 Physiotherapy
- LM102 Psychology
- LM103 Paramedic Studies
- LM150 Nursing (General)
- LM152 Nursing (Mental Health)
- LM154 Nursing (Intellectual Disability)
- LM156 Midwifery

4

Post all supporting documentation to the CAO by **1st March 2024**.

6

Screening of applications and scheduling of mature student interviews, where these are held, takes place **between April and June 2024**.

* If applying for **LM089, LM100 or LM102**, you must register for the Mature Student Admissions Pathway test (MSAP) by **early February**. *The test is usually held in early March.*

9

Mature applicants with full Leaving Certificate or relevant QQI awards, who have already made a CAO application, may amend their programme choices up to **1st July 2024**, in order to be assessed for places based solely on their Leaving Certificate points or QQI award. Mature applicants with the MSAC may amend their programme choices up to 1st July 2024 for direct entry programmes only.

11

Offers of places to mature applicants based on full QQI awards or Leaving Certificate are made at the end of July and mid-August respectively.

13

End August / early September 2024:

Orientation for all first year students. Students will be notified of the relevant date for their programme.

**8**

For mature applicants who had applied by 1st February, the CAO '**change of mind**' facility may be used between **5th and 12th May 2024** to include additional UL programmes (other than programmes listed in Step 2) on your CAO list.

10

Offers of places to mature applicants are made in Round 'A' in **early July 2024**.

12

Late August 2024: UL Welcome Programme for new Mature Students who have accepted their CAO offers.

14

Early September 2024: Classes commence for all students.



Mature Students in UL

Mature Student Office

The Mature Student Office (MSO) is part of the Student Affairs Division in UL and the work of the office is guided by a commitment to equity of access for all to third-level education. We aim to support all mature students to fully participate in your studies in UL, regardless of your background, prior educational achievements or your life circumstances. The office also acts as a guide for mature students as to how best to use the services and supports available within the University. The work and supports provided by the MSO focus primarily on supporting the transition of mature students to third-level studies and to creating an inclusive environment for mature students in UL.



Shirley Ryan
Mature Student Officer

☎ 061-213481

✉ Shirley.Ryan@ul.ie



Eve Diggall
Office Administrator

☎ 061-202735

✉ Eve.Diggall@ul.ie

Our main areas of work within this transition period include:

- Offering information and advice to prospective mature students who are considering coming to UL via information sessions, outreach visits, open days and personal enquiries
- Co-ordinating and delivering the Mature Student Access Certificate
- Co-delivering the Maths for STEM Certificate with Limerick and Clare Education and Training Board
- Hosting a Welcome Programme for incoming first year mature students in August every year
- Helping mature students to avail of the wide range of learning and other supports available in the University of Limerick & connecting mature students with each other

The Mature Student Office supports mature students who are registered on full-time undergraduate programmes in UL as well as students on the Mature Student Access Certificate. It is a place where mature students can come to talk and be listened to, in a friendly and empathetic environment. The Mature Student Office is located in the Main Building on the UL campus in Room EM019a (near Eden Restaurant).

Some of the other supports we offer include:

- Mature Student Peer Support Network
- Mature Student Coffee Mornings
- Regular emails to all mature students advising of relevant events, deadlines and supports

Who is considered a Mature Student?

A mature student is someone who is 23 years of age or older on 1st of January in the calendar year of entry to a full-time undergraduate programme.

What can I apply for?

Mature student applicants can apply to any of UL's programmes up to the closing date of 1st February. Individuals within the European Union must make an application through the Central Applications Office. Some programmes of study may accept applications after 1st February. Please contact the Undergraduate Admissions Office (*see below*) for further details. Individuals from countries outside of the European Union should contact the International Education Division (T: +353-61-202414 F: +353-61-213062 E: International@ul.ie)

Where can I get information on courses?

Information on all undergraduate programmes offered by UL can be found in the UL prospectus. The prospectus is available online at www.ul.ie/courses/ or contact the Undergraduate Admissions Office (T: 061-202015 <https://www.ul.ie/academic-registry/about/contact-us>) for a printed copy.

What are the entry requirements?

Each mature student application is considered on an individual basis. Academic qualifications, work and life experience, motivation and overall potential to be successful on your chosen programme of study are considered and evaluated from your written CAO application and sometimes also an interview. Mature student applicants are not assessed for places on the basis of Leaving Certificate points. However, if you have Leaving Certificate results and/or a relevant QQI Level 5/6 award, you may, if you wish, submit your application to the CAO to be considered for entry under these pathways, as well as under the mature student pathway.

As a mature student applicant, some programmes in UL do look for specific academic requirements prior to entry e.g. some Engineering programmes require mature student applicants to have higher level Leaving Certificate Mathematics, or equivalent. Please see Section 7 of this guide for further information on application and assessment criteria for individual programmes.

If you already hold a third-level qualification and wish to apply for advanced entry to UL, or if you wish to be considered for entry under UL's Recognition of Prior Learning Policy, see <https://www.ul.ie/academic-registry/transferring-another-3rd-level-institution> for further information.

How Many Mature Students are in UL?

The number of mature students starting in UL can vary from year to year. In 2022/23 there were approximately 450 mature students registered across all four years of all degree courses in UL. This equated to about 5% of all full-time undergraduate students. On average, UL reserves up to 15% of places on fulltime undergraduate courses for mature students, however not all courses will necessarily fill these places, as some programmes are more popular than others.

When do courses start?

All full-time undergraduate programmes in UL start in September of each year. The most up to date information on the UL academic calendar is available on: <https://www.ul.ie/academic-registry/academic-calendars-past-future/academic-calendar-2024/25>

An academic year runs from early September to mid May. There are two semesters (or terms) in each academic year. Each semester lasts fifteen weeks – twelve teaching weeks, followed by one study week and then a period of two weeks when examinations are held.

What level of commitment is required?

Undergraduate programmes require a significant level of commitment from students. Full-time students can expect to have between 10 and 20 or more class contact hours per week, depending on the programme you are enrolling for. These hours can be made up of a combination of lectures, tutorials, and laboratory or other practical sessions. Classes are scheduled any time from Monday to Friday, between 9.00am and 6.00pm. Therefore students need to be available to attend classes on a full-time basis. In addition, you can expect to do supplementary reading, study, project and assignment work outside of class time.

Welcome Programme for Mature Students

The Mature Student Office hosts a Welcome Programme for mature students each year at the end of August. This programme offers incoming first year mature students the opportunity to visit the UL campus in advance of the general first year Orientation programme. You get to learn more about services and supports available to students on campus, meet with other new mature students and with key support personnel, to kick-start your learning journey in UL.



Information for Mature Student Parents

Many of you may already be parents by the time you decide to return to third-level education or you may become a parent during your time in college. One way or the other, it is undoubtedly a significant challenge for anyone to commit to full-time study for a number of years while parenting, but hopefully you will find that it is also a rewarding and positive experience, both for you and for your children, and that you will get to connect with other mature student parents on campus.

There are many supports and services available within UL to student parents e.g. Student Health Centre, Counselling, Chaplaincy, Student Life (who manage the childcare bursary and can offer advice on social welfare entitlements), some or all of which might be relevant to you if you are already a parent or if you learn that you are to become a parent, depending on your particular need (medical, emotional, financial). More detailed advice and information is also available from sources such as Citizens Information (www.citizensinformation.ie) and the Department of Employment Affairs and Social Protection www.gov.ie.

Some of the most relevant financial supports for mature students, including student parents, are detailed in section 6 of this Guide. These include the Back to Education Allowance, SUSI Grant, Student Assistance Fund, 1916 Bursary Fund (lone parents, in particular, are a specific sub-group considered within the 1916 Bursary Fund), and the childcare bursary from UL's Financial Aid Fund.

SILVER APPLES CRÈCHE

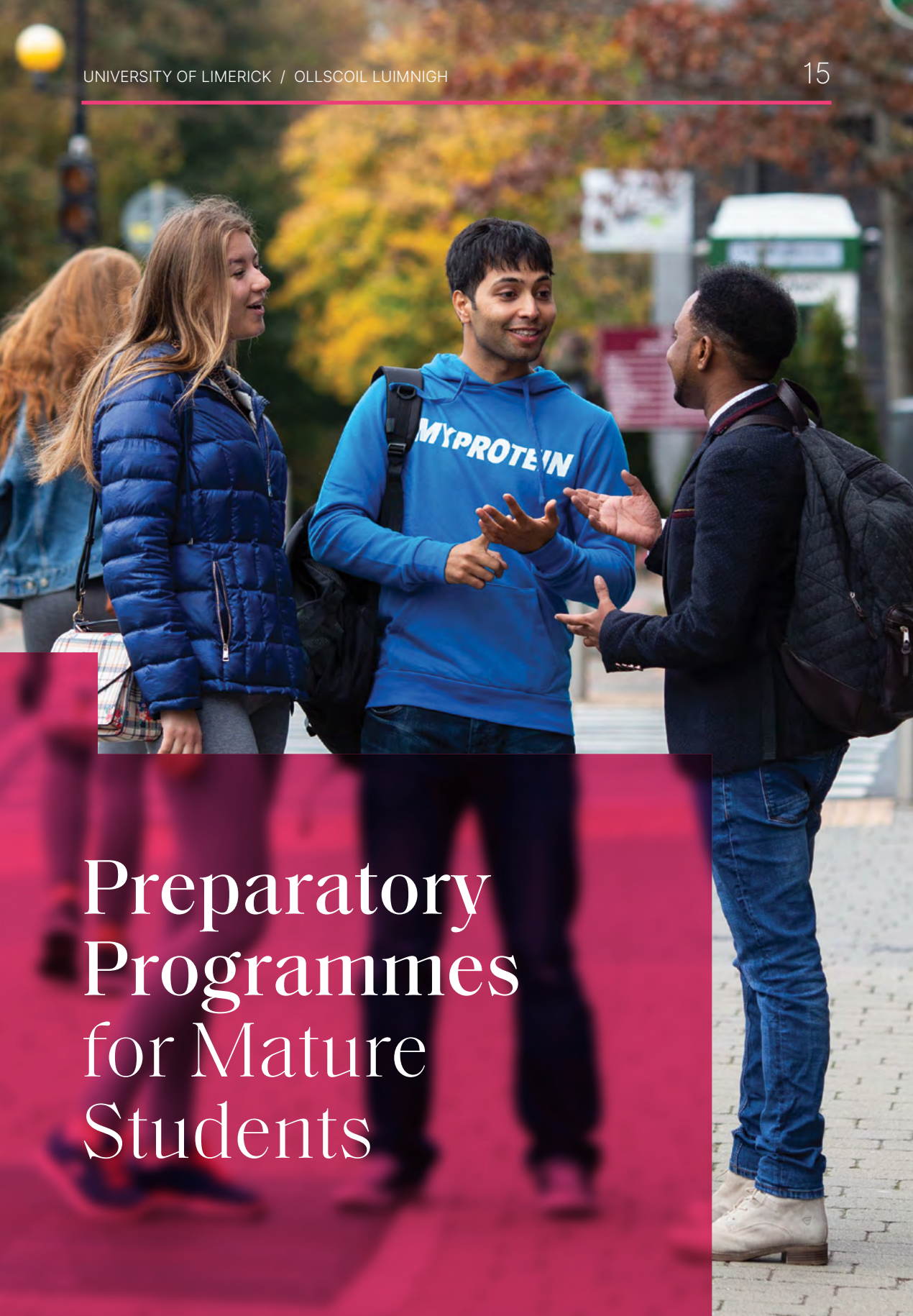
Silver Apples Crèche is located on the UL campus and both students and staff can apply for places in this facility on a first come first serve basis. Children can be from 13 weeks old up to school going age (5 years old). Opening hours are from 8.30am to 6pm Monday to Friday for 49 weeks in the year. The majority of places offered are full-time however they do facilitate part-time (2/3 days per week). For information on fees, please reach out to Silver Apples Crèche directly. Students may be entitled to apply for the childcare bursary through UL Student Life (see p35 of this Guide) for further assistance with these fees. To make an enquiry please contact **E: SilverApplesCreche@ul.ie**

MOTHER AND BABY ROOM

There is a mother and baby room on campus for both staff and students who wish to feed/change their baby. The room is located in the Main Building, Room E0-010a and access is provided by UL's Human Resources Department. The Mature Student Office is happy to refer you if you wish to access this service.

BACK TO EDUCATION ALLOWANCE VS ONE PARENT FAMILY PAYMENT

If you are already on One-Parent Family Payment (OPFP) you will need to calculate whether it is more beneficial for you to apply for the Back to Education Allowance (BTEA) on returning to education or to remain on your current payment and apply for a student grant. You should factor your child/ren's age into this decision when planning for income support. If you are eligible for SUSI, you may receive the maintenance component of the SUSI grant together with your OPFP, whereas you cannot receive both BTEA and the maintenance grant simultaneously. However, if you are nearing the end of your OPFP, BTEA may be of greater benefit to you because it is paid for the duration of your programme of study. See https://www.citizensinformation.ie/en/social_welfare/social_welfare_payments/back_to_education/ for more information.



Preparatory Programmes for Mature Students

Mature Student Access Certificate

The Mature Student Access Certificate (MSAC) is a one year full-time pre-degree course designed for mature students who wish to develop or refresh key learning skills before applying directly for a degree course.

The MSAC will facilitate you to develop core skills which will be very useful to you in third-level, such as study skills and IT skills, and gives you an opportunity to study a specialist subject area such as Humanities, Science or Engineering. You also get to experience life on campus in UL as a fulltime registered student before committing to study on a four-year degree programme.

The modules offered on the programme include the following:

A. CORE MODULES

completed by all participants

1. Mathematics / Engineering Mathematics
2. Computer Skills
3. Study Skills
4. Educational Guidance

B. ELECTIVE MODULES

choose one of the modules below

1. Humanities: History, Politics & Public Administration, Sociology, English Literature;
2. Science: Biology, Chemistry & Physics;
3. Engineering: Introduction to Engineering, Manufacturing Technology and Computer Aided Design (CAD).

PROGRESSION FROM THE MATURE STUDENT ACCESS CERTIFICATE

Students who successfully complete the MSAC are guaranteed direct entry to a number of undergraduate degree programmes [refer to list below] in UL in degree programmes in UL in the Humanities, Science, Engineering and Business disciplines and to one degree programme in Mary Immaculate College. The progression opportunities available are dependent on the elective module chosen by the student on the MSAC. See below for a list of these programmes.

Students must achieve an overall QCA of 2.6 or above on the MSAC in order to secure a guaranteed place on your chosen degree programme. You also have the option of applying on a competitive basis to any other programme of your choice in UL, outside of the direct progression list.

Candidates must be at least 22 years of age, by 1st January 2024 to apply for entry in September 2024. There are no standard educational entry requirements but evidence of a motivation to progress to third-level education is desirable. Evidence of English language proficiency may be required where English is not the first language of applicants.

UL programmes to which progression is guaranteed from the MSAC:

Science and Engineering

- LM068** Food Science and Health
- LM077** Aeronautical Engineering
- LM082** Construction Management and Engineering
- LM093** Equine Science
- LM115** Chemical & Biochemical Engineering
- LM116** Engineering
- LM118** Electronic & Computer Engineering
- LM121** Computer Science
- LM122** Creative Media & Interaction Design
- LM123** Biological & Chemical Sciences
- LM125** Physics
- LM180** Certificate/Diploma in Equine Science

Arts, Humanities and Social Sciences

- LM002** Arts
- MI002** Arts (Mary Immaculate College)
- LM039** Journalism & Digital Communication
- LM040** European Studies
- BA / Diploma Arts (Evening)

Business

- LM063** Technology Management
- LM050** Business Studies

The Mature Student Access Certificate will facilitate you to develop core skills which will be very useful to you in third-level .

Maths For Stem Certificate

Leading to QQI Maths for Stem Level 5 Special Purpose Award (5S2246)

This programme is offered by the Further Education and Training Division of Limerick and Clare Education and Training Board in partnership with the University of Limerick (UL). It is designed for learners who wish to improve their competency and knowledge in mathematics particularly as it relates to work or study in the Sciences, Technology, Engineering and Mathematics (STEM) disciplines.

The Maths for STEM Certificate is recognised by UL as equivalent to Higher Level Leaving Certificate Mathematics (HLLCM) for the purposes of meeting the minimum entry maths requirement, for mature applicants, to certain degree programmes. A Merit in the Maths for STEM Certificate is deemed equivalent to a H4 in HLLCM, while a Distinction is deemed equivalent to a H3.

The course content is set out in the Award Specification for the QQI Maths for STEM Award (5S2246) (see: <https://qsearch.qqi.ie/WebPart/AwardDetails?awardCode=5S2246>). The following mathematical topics are covered:

1. Mathematical Proficiency
2. Number
3. Set Theory and Logic
4. Algebra
5. Functions and Calculus
6. Geometry and Trigonometry
7. Probability and Statistics

PROGRESSION FROM PROGRAMME

All mature-age participants in this course who wish to progress to a degree programme in UL are required to apply via the CAO by 1st February in the relevant year. Achievement of the minimum required grade in the Maths for STEM Certificate does not guarantee participants a place on a relevant degree programme. Participants will still be assessed on a competitive basis, as normal for all mature applicants to UL (see Section 7 of this Guide).

PROGRAMME DELIVERY

The course is delivered via blended learning. Classes take place in UL's Access Campus on Wednesday evenings. An additional three hours of online lecture content and materials will also be delivered each week. Participants on the course are registered learners of Limerick and Clare Education and Training Board.

Applicant requirements for entry in September 2024:

- Mature-age applicants must be aged 22 years or older by 1st January 2024.
- Hold a minimum of a Distinction in a QQI / FETAC maths award at Level 4 or a Pass in Ordinary Level Leaving Certificate Mathematics or equivalent
- Have good IT skills and good English language skills

QQI / Further Education Programmes

Completing a further education programme is another excellent way of preparing yourself academically before progressing on to a full-time degree. UL has developed a number of entry routes to the first year of 14 of our degree programmes for students who have achieved a relevant QQI award. These entry routes are to programmes in the Humanities, Nursing, Law and Business disciplines.

Further information on these QQI linked programmes is available from the Undergraduate Admissions Office at **T: 061-202015** <https://www.ul.ie/academic-registry/about/contact-us> or on <https://www.ul.ie/academic-registry/prospective-students/pathways-ul>

Other Access Courses in Limerick

Both Mary Immaculate College (MIC) and Technological University of the Shannon (TUS) also offer access courses which are designed specifically to prepare mature students for entry to third-level education. MIC offers three courses:

- Pre-University Programme
- Foundation Certificate for Mature Learners
- Teacher Education Access Programme for Mature Learners

Further information on these courses is available from the MIC Admissions Office,

T: 061-204348, E: admissions@mic.ul.ie

Limerick Institute of Technology offers one access course:

- Certificate in Transition to Higher Education (Foundation Programme)

Further information on this course is available from the TUS's Flexible Learning Department,

T: 061-293802, visit <https://tus.ie/flexible/> or E: flexible@tus.ie

returning to third-level study





Making an Application



Initial steps to consider

There are a number of key steps which are advisable for mature students to undertake prior to making an application for an undergraduate programme in UL.

1. RESEARCH PROGRAMMES OF INTEREST

Have a look at the UL prospectus (available online at www.ul.ie/courses/ or request a printed copy from the Undergraduate Admissions Office **T: 061-202015**) to see the variety of programmes on offer and think about what area(s) are of most interest to you. Take time to look at the detail of programmes and not just the titles, as the information the title provides you with can be limited. Look at how a programme is structured, what subjects are taught, whether there are specific entry requirements (such as higher level Leaving Certificate Maths for Engineering programmes), and what career options are available afterwards.

If you are interested in where a particular degree may take you, have a look at the Using Your UL Degree page on the Cooperative Education & Careers Division website (www.ul.ie/cecd/students/careerservices/options).

2. EDUCATIONAL GUIDANCE

'Guidance' refers to a range of activities designed to assist people to make appropriate learning choices. It can be very useful to meet with a guidance counsellor to talk through your learning options before making your application. A guidance counsellor can help you to identify the wide range of opportunities which are open to you and can help you to consider your decision to return to third-level education from a holistic perspective e.g. Have you taken into account the kinds of support you will need at home? Have you looked at possible part-time options? Have you fully looked at the financial impact of returning to study? Have you considered study options available in different colleges?

The University of Limerick has a dedicated Careers Adviser for mature students. Patsy Ryan works with the Cooperative Education and Careers Division and may be available, outside of academic term time, to meet with or advise any prospective mature student who is considering applying to UL.

Patsy can be contacted at **T: 061-234227** or **E: patsy.ryan@ul.ie**.

Adult Education Guidance Services (AEGS) are also available in most counties in Ireland and provide guidance and information services to various designated client groups. See www.aegai.ie for contact details for your nearest service. AEGS information services are generally open to members of the public.

3. OPEN EVENINGS & INFORMATION SESSIONS

UL hosts a number of Open Days during the year. Prospective mature students are encouraged to attend these events as they provide an opportunity to meet with teaching and support staff working in UL and to learn more about the various programmes on offer. Check the Mature Student Office website (www.ul.ie/mso) for further details.

Some evening information sessions are also offered by the Mature Student Office, usually in April, to help mature applicants to prepare for mature student interviews. Details are updated on www.ul.ie/mso.

4. COMPLETE AN ACCESS COURSE OR OTHER PROGRAMME OF STUDY

If it has been a long time since you sat your Leaving Certificate, or if you didn't complete your formal schooling when you were younger, it can be a good idea to consider doing some preparatory study before applying for a degree programme. By doing this, you will get an opportunity to build up your confidence, particularly in relation to your learning skills. It can also give you the opportunity to experience the commitment required to undertake study on a full-time basis.

Useful courses to undertake before applying for degree programmes can be third-level 'access' courses, such as UL's Mature Student Access Certificate; QQI programmes (offered by post-leaving cert colleges or adult education centres); or Leaving Certificate subjects which can be studied for either independently or through your local adult education centre or VTOS programme.

UL has also developed a number of entry routes to the first year of 14 degree programmes for students who have achieved a relevant QQI award. These entry routes are to a range of programmes in the Humanities, Nursing, Law and Business disciplines. The information on the linked programmes in these disciplines may be useful to mature students who are considering undertaking some preparatory study before starting on a degree programme.

Further information on these QQI linked programmes is available from the Undergraduate Admissions office at **T: 061-202015** <https://www.ul.ie/academic-registry/about/contact-us> or on <https://www.ul.ie/academic-registry/prospective-students/pathways-ul>

5. COMPUTER SKILLS

Being comfortable using computers before you start on a degree programme will make your life so much easier! Computer skills really are 'life skills' when it comes to studying in third-level. It is highly recommended, if you do not currently have good computer skills (e.g. familiarity with using email, the internet, Word, and Excel), that you undertake a basic computer skills course before starting your degree programme as the skills you develop will be invaluable to you during your time at UL and will give you much more confidence when starting in first year.

6. LANGUAGE REQUIREMENTS

English Language Requirements:

For mature applicants for whom English is not their first language, proof of competence in the English language may be required as part of your application to UL. For full details regarding acceptable qualifications and specific English language requirements please consult the University of Limerick language centre website at www.ul.ie/languagecentre. Where assessment tests or interviews are held in English however, as part of the mature student application assessment, success in these may be deemed sufficient proof of English language competency.

Non-EU applicants to UL should apply through the International Education Office at:

T: 061-213034 E: international@ul.ie W: www.ul.ie/international

Foreign Language Requirements:

Mature applicants who are applying for programmes with a requirement to have Leaving Certificate level language, or equivalent, prior to entry, are strongly recommended to spend time improving their language skills in the year prior to entry to the degree course. This can be done by attending refresher language classes in language institutes or adult education colleges; immersing themselves in speaking the language in the country of origin; or attending social clubs or language circles where the language is spoken. Interviews for degree programmes where a language is a significant component of the course of study, will more than likely be held in the language to be studied.

7. FINANCIAL CONSIDERATIONS

Consider the financial implications of coming back to study on a full-time basis for up to four years. Further information on costs and funding are available in the next section of this guide.

How To Apply

ALL PROGRAMMES

To submit an application for consideration as a mature student, the following steps must be completed:

- Mature applicants must apply online through the Central Applications Office (CAO) by 1st February 2024.
- Mature applicants must indicate in their CAO application that they are a mature applicant. They will be then directed to an additional section of the online form for completion.
- All supporting documentation (personal statements, evidence of qualifications, employment etc) must be posted to the CAO by 1st March 2024.

See www.ul.ie/academic-registry/prospective-students/applying-UL/mature-students for full details on the supporting documentation required for different programmes.

ADDITIONAL APPLICATION REQUIREMENTS FOR SOME PROGRAMMES

- Applicants to LM038 Psychology and Sociology are required to submit an essay to the CAO as part of their supporting documentation.
- Applicants to LM089 Sports and Exercise Sciences, LM100 Physiotherapy and LM102 Psychology are required to register for the Mature Students Admissions Pathway (MSAP) test by early February each year, with the test generally taking place in early March. Further details, including test venues, are available from <https://msap-ireland.acer.org/>. Performance in this test is the only basis on which places on these programmes are allocated to mature students.
- Applicants to LM103 Paramedic Studies are required to attend an interview. Assessment test is NOT required for 2024 entry.
- Applicants to all Nursing and Midwifery programmes must also apply to the Nursing and Midwifery Board Ireland (NMBI) to register to sit a written assessment test which the NMBI runs. The written assessment takes place on one date only, usually in April. Performance in this test is the only basis on which places on Nursing and Midwifery programmes are allocated to mature applicants. Further information is available from:
www.nmbi.ie/Careers-in-Nursing-Midwifery/How-to-apply/Mature-Applicants
E: education@nmbi.ie

Late applications may be considered for some programmes up to 1st May 2024. Please check www.ul.ie/academic-registry/prospective-students/applying-UL/mature-students after the 1st of February to see which courses are open to late mature applicants.

Non-EU applicants should contact the International Education Division
T: +353-61-213034 F: +353-61-213062 E: international@ul.ie

Writing a Personal Statement

Some, but not all, programmes require a tailored personal statement from mature student applicants. A personal statement gives you an opportunity to provide additional information on why you wish to pursue a degree programme. This is your opportunity to 'sell' yourself and to emphasise the experience and/or interests you have which are relevant to your chosen course. A personal statement is important, especially if you are applying to a competitive programme for which there is a high demand for places. In such cases, if a tailored personal statement (if specified as an application requirement) is not included with your application, you may not be short-listed for consideration. Be specific and proactively demonstrate how your experience or your interests match the course you are interested in doing.

Your personal statement should be no greater than one side of a single A4 page and cover the following areas:

1. Reasons for wishing to undertake LMXXX.
 2. Programme's potential contribution to your future career or life plans
 3. Highlight relevant experiences or skills gained through employment, voluntary work, or personal interests which have prepared you to undertake LMXXX.
 4. Your knowledge and understanding of the career area in which you are interested
 5. Any specific preparation you have undertaken in anticipation of commencing LMXXX.
- Title your document 'Personal Statement for LMXXX'
 - Ensure that you include your CAO number on your Personal Statement

How are Applications Assessed?

GENERAL ASSESSMENT INFORMATION

Mature student applications are assessed by academic staff from the programme to which you have applied. Each mature student application is considered on an individual basis. Academic qualifications, work and life experience, motivation and overall potential to be successful on your chosen programme of study are considered and evaluated from your written CAO application and sometimes also an interview. Applicants may be short-listed if the number of applications received for a particular programme is high. Please bear in mind when applying that some programmes in UL may look for specific academic requirements prior to entry e.g. some Engineering programmes will require applicants to have higher level Leaving Certificate mathematics, or equivalent. See section 7 for further information on application and interview assessment criteria.

SPECIFIC ASSESSMENT INFORMATION

In the case of **LM038 Psychology and Sociology** applicants are assessed on the essay that they include with their application, as well as on the quality of their written CAO application. For **LM089 Sports and Exercise Sciences**, **LM100 Physiotherapy** and **LM102 Psychology**, applicants are assessed based on their performance in the Mature Students Admissions Pathway (MSAP) test. The test is designed to assess a range of competencies considered important for success in higher education studies. The purpose of the test is to assess ability to understand and analyse material, to think critically about issues and to organise and express thoughts in a logical and effective way. Further details are available from msap-ireland.acer.org/.

Applicants to **LM026 Performing Arts** will need to bring supporting materials to the interview as part of the application process.

Applicants to **LM099 Architecture** are expected to submit a portfolio of personal work after they have submitted their application.

For **LM103 Paramedic Studies**, applicants will be required to attend an interview. Assessment test is NOT required for 2024 entry.

For **LM028 Criminal Justice** and **LM029 Law Plus**, applicants will be invited to complete a written assessment in UL, prior to being short-listed for interview.

For **LM076 Product Design and Technology**, applicants who are short-listed for interview will be requested to bring supporting work with them.

Can I defer my place?

A student who is offered a place may, under certain conditions, defer entry for one year. In order to defer entry, on receipt of an offer of a place from the Central Applications Office (CAO) a student should:

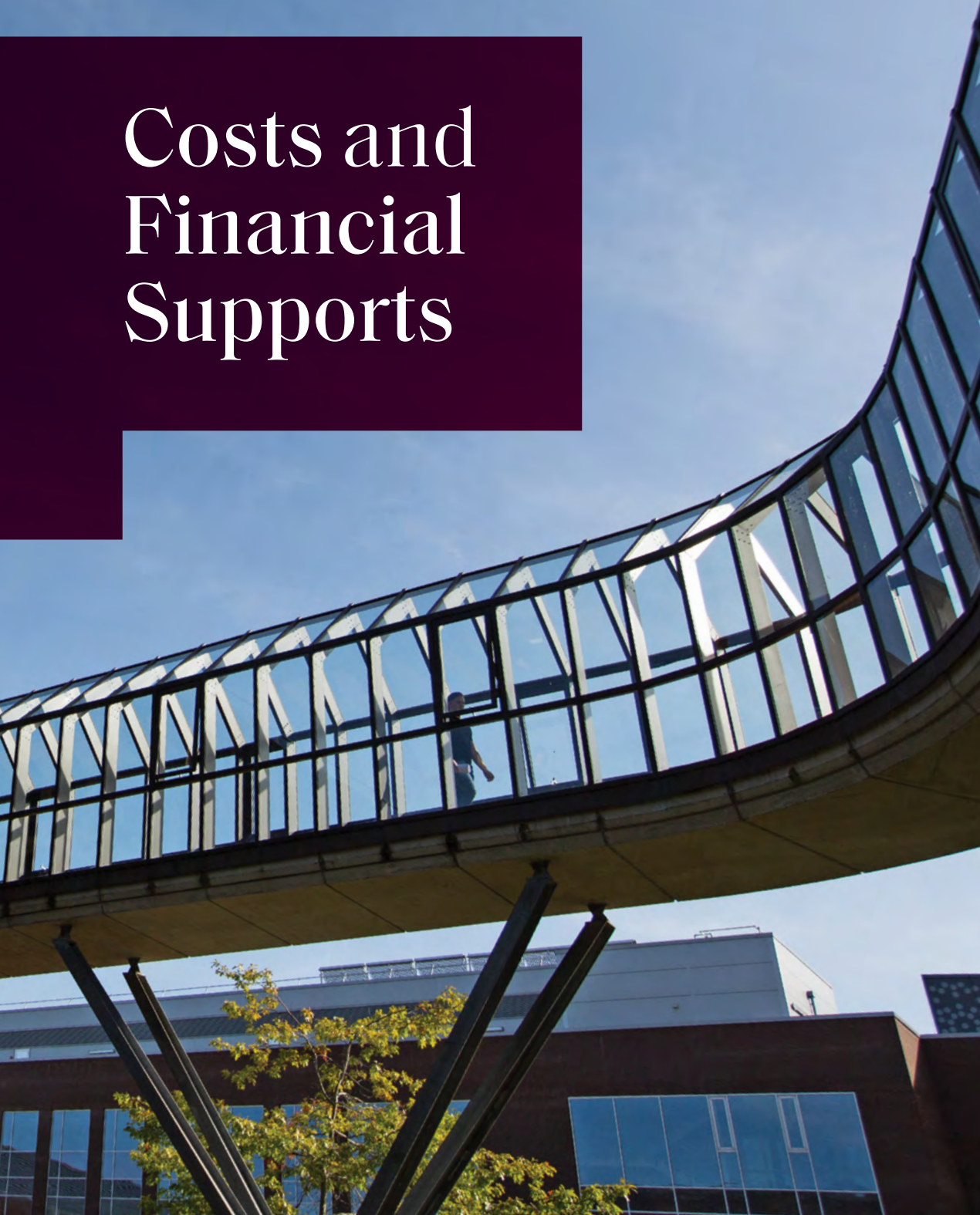
- Write/email immediately to the Undergraduate Admissions Office setting out reasons for the request. Mark "DEFERRED ENTRY" clearly on the envelope/ message line.
- The letter/email must arrive in the Undergraduate Admissions Office, at least two days before the "Reply Date" shown on the Offer Notice. Please quote your name, CAO number and course in the letter/email.
- Applicants should not accept the offer through the CAO.
- In order to take up the deferred place, re-apply through CAO by 1st February of the succeeding year placing the deferred course as the first and only choice, and tick the deferred indicator box on the CAO application form.

A decision on the request will be communicated to the applicant.

Mature applicants who choose not to defer their offer of a place, and who apply for the same programme again in a future year, cannot be guaranteed to receive a future offer, as offers of places in any year depend, for example, on the assessment criteria applied, and the number of mature student places available on the programme that year vis-a-vis the number of applications received.

Mature Student Applications are assessed by academic staff from the relevant faculty or programme to which you have applied. Each Mature Student Application is considered on an individual basis.

Costs and Financial Supports



Programme Fees

For full-time undergraduate programmes, there are three main categories of fees which apply:

- **TUITION FEES**
- **STUDENT CONTRIBUTION CHARGE**
- **STUDENT CENTRE LEVY**

TUITION FEES

Tuition fees for which you are liable are based on a number of criteria including citizenship, residency, course and prior education. Typically if you are a first-time entrant to higher education, have been resident in the EU for 3 of the 5 years prior to starting your course, and you fulfil the relevant citizenship criteria, you will be deemed eligible for “free fees”, i.e. the Irish Government covers the cost of your tuition fees. Tuition fees may not be paid for students who are pursuing a second undergraduate programme, repeating a year of study or who hold a postgraduate qualification.

Further information on eligibility for the Free Fees Initiative is available on www.studentfinance.ie. Information on the tuition fees payable for UL courses is available from the UL Fees Office, **T: 061-202026**; **E: student.fees.office@ul.ie**

If you do have to pay tuition fees tax relief may be available for students on approved full-time and part-time undergraduate programmes. Programmes must be of at least two years duration. To qualify for relief, full tuition fees must be paid by the individual on his/her own behalf or on behalf of a spouse, child or person for whom the individual is the legal guardian. As claims should be made on the individual’s tax return to the Revenue Commissioners, proof of fee payment must be submitted with your claim.

STUDENT CONTRIBUTION CHARGE

All full-time undergraduate students are required to pay the Student Contribution charge, even if they are eligible for free tuition fees. This charge has been EUR3,000 for the past number of years. Eligible students may apply to the Student Universal Support Ireland (SUSI) to have this charge paid on their behalf (see Higher Education Grants section overleaf).

STUDENT CENTRE LEVY

This annual charge is €98 for the 2023/24 academic year and is expected to go up in increments of €2 per year to reflect inflation. It is payable by all students and is not covered by the SUSI Grant. This levy contributes to the development of a number of student projects. See www.ulstudentlife.ie/leave-a-legacy-project/ for more details.

Cost of Living

The cost of living associated with being a full-time student very much depends on your individual circumstances. Typical costs can include rent, utilities, food, travel, books and materials, clothes, medical costs and social costs. As a mature student you may need to also factor in additional costs such as your mortgage, childcare costs, family support costs and so on.

It is strongly advisable that you spend some time working out the potential costs associated with being a full-time student. The following website has useful tools for helping you to work out a budget based on your individual circumstances: www.nca.ie/tools-calculators.

Financial Support

There are a range of financial supports which are available for full-time undergraduate students in third-level. An excellent source of information on all of these is www.studentfinance.ie.

BACK TO EDUCATION ALLOWANCE

The Back to Education Allowance (BTEA) is a key financial support for many mature students. The BTEA allows qualifying persons (who are in receipt of certain social welfare payments) to retain those payments, subject to regular means-testing where applicable, whilst returning to full-time education in approved courses.

In general, to qualify for the BTEA participants must be aged 21 years or over, and be in receipt of specified social welfare payments for at least nine months prior to starting the first year of an approved third-level course. Persons awarded statutory redundancy under Irish legislation may have immediate access to the BTEA scheme (or within one year) of the award of the statutory redundancy, provided an entitlement to a relevant Social Welfare payment is established prior to commencing an approved course of study.

Full information on the BTEA, and on how to apply, can be obtained from your local Department of Social Protection Office or from:

www.welfare.ie/en/Pages/353_Back-to-Education-Allowance.aspx

STUDENT UNIVERSAL SUPPORT IRELAND (SUSI)

The student grant is another primary source of financial help available from the Irish State for students on full-time higher education courses. Support is available to eligible students in most colleges in Ireland as well as eligible Irish students in many colleges in Northern Ireland, the UK and other EU States.

SUSI – Student Universal Support Ireland (www.susi.ie) – is the online application system for all higher education grants for full-time students. For eligible students the grant helps with the various costs of participating in further or higher education. Students on part-time courses, access or foundation courses (in higher education institutions) and short courses are not eligible to apply for a student grant. As the grants are means-tested, family and/or personal income is a key factor that will be assessed when you apply but there are also some other conditions.

If you think you are eligible for the student grant, you do not have to wait until you receive an offer of a place or enrol in college. You should make your application as early as possible after the April opening date. You can review eligibility criteria for SUSI by using the Eligibility Reckoner on the SUSI website www.susi.ie where you can quickly and easily self-assess whether you may be entitled to a full or partial grant depending on your circumstances. You are advised to make your application as soon as possible as only when your application has been completed in full and submitted to SUSI can your eligibility for funding be determined.

The SUSI grant may cover the student contribution fee or tuition fees, if these are payable, and also possibly a maintenance grant. Students cannot receive both a maintenance grant and the BTEA.

STUDENT ASSISTANCE FUND

The Student Assistance Fund (SAF) provides financial support to full or part-time students (other than students on access programmes) who are experiencing financial difficulties while attending college. The SAF is designed to provide a source of financial support in addition to a SUSI grant and is available to help with costs such as: books and class materials, rent, heating and lighting bills, food, essential travel, childcare costs, and medical costs. This Fund is managed by the Access Office in UL.

Applications to the Fund can only be made after you register as a student in September. The Mature Student Office advises all registered mature students when this Fund opens.

The Student Assistance Fund is funded by the Irish Government and part-funded by the European Social Fund.



FINANCIAL AID FUND

In conjunction with UL Student Life and the Postgraduate Students' Union, the University administers two types of financial aid. The Financial Aid Fund is supported by gifts from UL Alumni through the UL Foundation's Alumni Annual Fund Appeal and through UL Student Capitation. This scheme is designed to help students who experience short-term financial problems. If the student qualifies for assistance, she/he will receive an interest free loan. This loan is repayable in full prior to graduation.

Additionally, student parents who are experiencing financial difficulties can apply for a Childcare Bursary to support them with their childcare/child-minder costs.

If a student is experiencing financial difficulty and wishes to apply for either type of funding, they are encouraged to contact the UL Chaplaincy Service (**email john.campion@ul.ie**), the Welfare Officer in the Students Union or the Student Information and Support Coordinator, **email studentsupport@ul.ie**.

FUND FOR STUDENTS WITH DISABILITIES

The Fund for Students with Disabilities allocates funding to further and higher education colleges for the provision of services and supports to full-time students with disabilities. The Fund aims to ensure that students can participate fully in their academic programmes and are not disadvantaged by reason of a disability.

You do not have to be in first year of a course to be eligible under the Fund. Application for the first time can be made on your behalf during any year of study on an approved course. A claim under the Fund is made on behalf of an eligible student by UL following an assessment of need by the Disability Support Service. Applications cannot be made directly to the Fund by students. Students with disabilities enrolled in part-time courses, access or foundation courses in higher education institutions or short courses are not eligible for consideration under the Fund.

The Fund for Students with Disabilities is funded by the Irish Government and part-funded by the European Social Fund.

SCHOLARSHIPS

Details on all scholarships available within UL are available from the UL prospectus (<https://www.ul.ie/courses/about-ul/academic-scholarships>). The most relevant scholarships for mature students are listed below.

- **1916 Bursary Fund**

The 1916 Bursary Fund, funded by the Department of Education and Skills, commemorates the centenary of 1916 as part of an overall series of measures to encourage participation and success by students from sections of society that are significantly under-represented in higher education. Bursaries worth €5,000 per annum for the duration of studies are available. Applicants must be assessed as socio-economically disadvantaged to be eligible. 20% of the 1916 Bursaries are reserved for students who are lone parents. See <https://hea.ie/funding-governance-performance/funding/student-finance/1916-bursary-fund/> for further details.

- **University of Sanctuary Bursaries**

The University of Sanctuary Bursaries offer opportunities for those from refugee and asylum-seeking communities to study at the University of Limerick, including new mature students. The bursary offers support towards the costs of higher education, including fee waivers, if applicable. If you are a new entrant to first year on any full-time undergraduate course in UL and meet the eligibility criteria (international protection applicant or have been granted international protection) please see full details on www.ul.ie/ul-university-sanctuary.

- **Uversity Higher Education Scholarships for Adult Learners**

Uversity's Scholarships are intended to unlock adult learners' potential. By providing multi-annual financial support, Uversity's Scholarships aim to remove the financial barriers to pursue a Bachelor's degree for the first time. Scholarships are not limited to particular subject areas and will enable individuals 23 years or older to complete a Bachelor's degree in one of the participating institutions in the Republic of Ireland or Northern Ireland. See www.u-versity.eu/ for further details.



Application and Interview Assessment Criteria

Education and Health Sciences

Code	Programme / Group Of Programmes	Reserved Mature Student Places 2024*	Minimum Entry and/or Application Requirements
LM038	BA PSYCHOLOGY & SOCIOLOGY	5	Submission of essay with CAO application
LM089	BSC SPORT & EXERCISE SCIENCES	10	N/A
LM100	BSC PHYSIOTHERAPY	5	
LM102	BSC PSYCHOLOGY	11	
LM090	BSC PHYSICAL EDUCATION WITH CONCURRENT TEACHER EDUCATION	11	Submission of tailored Personal Statement for LM090 with CAO application
LM091	BA LANGUAGES WITH CONCURRENT TEACHER EDUCATION	3	HB3 (H3) in one of the core languages (French/German/Irish/Japanese/Spanish) Submission of tailored Personal Statement for LM091 with CAO application

**Guideline only. These figures may differ slightly for 2024 as they are calculated from the total number of places available on a programme in any year. However, not all mature student places may be filled, as it depends on the number and quality of applications received in any year.*

2024 Entry

Application Assessment Criteria	Interview Assessment Criteria
<ul style="list-style-type: none"> • Prior education • Work/life experience • Transferable skills • Essay 	<p>No interview. Places awarded on basis of application & essay only.</p>
<p>Applicants are required to undertake the Mature Students Admissions Pathway (MSAP) test. See https://msap-ireland.acer.org/ for test dates, details on how to register and prepare for the test.</p>	<p>No interview. Places awarded on basis of performance in the MSAP.</p>
<ul style="list-style-type: none"> • Prior education • Relevant work / voluntary experience • Teaching and/or coaching awards • Evidence of desire to do this course • Overall application quality 	<ul style="list-style-type: none"> • Personal information and background • Knowledge of the programme • Relevant life / work experience • Coping with the programme
<ul style="list-style-type: none"> • Prior education – Leaving certificate performance and additional educational/professional qualifications • Relevant work / voluntary experience • Evidence of desire to do this course • Demonstration of an understanding of the nature and philosophy of languages education • Overall application quality 	<p>Places normally awarded on basis of application and personal statement alone. An interview may be requested if deemed helpful to the assessment of the application, focusing on:</p> <ul style="list-style-type: none"> • Understanding of teaching languages as a career • Evidence of language proficiency • Communication skills • Relevant knowledge and experience • Knowledge of course and preparedness for third-level

Education and Health Sciences

Code	Programme / Group Of Programmes	Reserved Mature Student Places 2024*	Minimum Entry and/or Application Requirements
LM092	BSC SCIENCE WITH CONCURRENT TEACHER EDUCATION (Biology with Physics or Chemistry or Agricultural Science)	10	HC2 (H4) in at least one Leaving Cert Science subject AND OC2/HD3 (O4/H7) in Leaving Cert Mathematics or equivalent
LM096	BSC SCIENCE WITH CONCURRENT TEACHER EDUCATION (Physical Sciences with Physics and Chemistry)	3	Submission of tailored Personal Statement for LM092 / LM096 with CAO application
LM094	BACHELOR OF EDUCATION IN GRAPHICS AND CONSTRUCTION TECHNOLOGY	10	Submission of tailored Personal Statement for LM094 / LM095 with CAO application
LM095	BTECH MATERIALS AND ENGINEERING TECHNOLOGY WITH CONCURRENT TEACHER EDUCATION	9	

*Guideline only. These figures may differ slightly for 2024 as they are calculated from the total number of places available on a programme in any year. However, not all mature student places may be filled, as it depends on the number and quality of applications received in any year.

2024 Entry

Application Assessment Criteria

- Prior education - Leaving Cert performance and additional educational/professional qualifications
- Relevant work / voluntary experience
- Evidence of desire to do this course
- Demonstration of an understanding of the nature and philosophy of science education
- Overall application quality

Interview Assessment Criteria

- Understanding of teaching science as a career
- Communication skills
- Relevant knowledge and experience
- Knowledge of course and preparedness for third-level

Interviews may be conducted in person or over the phone

- Prior education, including any third-level qualifications or other courses completed
- Personal statement
- Preparedness for teaching
- Demonstration of an understanding of the nature and philosophy of technology education

No interview. Places awarded on basis of application and Personal Statement.

Education and Health Sciences

Code	Programme / Group Of Programmes	Reserved Mature Student Places 2024*	Minimum Entry and/or Application Requirements
LM097	BSC MATHEMATICS AND COMPUTER SCIENCE WITH CONCURRENT TEACHER EDUCATION	2	<p>HC2 (H4) in Leaving Certificate Mathematics or equivalent or Merit in QQI Maths for STEM (5S2246/5N0556) or Pass in UL Special Maths exam</p> <p>Submission of tailored Personal Statement for LM097 with CAO application.</p>
LM103	BSC PARAMEDIC STUDIES	18	<p>A valid provisional C1 or full C1 licence is required prior to offer of a place on the programme. Applicants must produce a full C1 licence by the end of Year 1. Penalty points may preclude progression.</p> <p>Please note this is an entry requirement, proof of licences will be requested.</p>

*Guideline only. These figures may differ slightly for 2024 as they are calculated from the total number of places available on a programme in any year. However, not all mature student places may be filled, as it depends on the number and quality of applications received in any year.

2024 Entry

Application Assessment Criteria

- Prior education – Leaving certificate performance and additional educational/professional qualifications
- Relevant work / voluntary experience
- Evidence of desire to do this course
- Demonstration of an understanding of the nature and philosophy of mathematics education
- Overall application quality

Interview Assessment Criteria

- Understanding of teaching mathematics and computer science as a career
- Communication skills
- Relevant knowledge and experience
- Knowledge of course and preparedness for third-level

Interviews may be conducted in person or over the phone.

No assessment test for 2024 entry.

Eligible mature applicants will be called to attend for interview.

- Demonstration of lifelong learning through examples
- Knowledge of the perceived attributes of a modern Paramedic
- Knowledge of the modern Paramedic role
- Examples of calmness and decision making under pressure
- Examples of common conditions encountered by Paramedics in Ireland
- Students admitted to the programme are required to undergo and successfully complete a Garda Vetting process and an Occupational Health Clearance

Education and Health Sciences

Code	Programme / Group Of Programmes	Reserved Mature Student Places 2024*	Minimum Entry and/or Application Requirements
LM105	BSC IN EXERCISE AND HEALTH FITNESS MANAGEMENT	5 (additional spaces may be available dependant on application numbers)	Submission of tailored Personal Statement for LM105 with CAO application
LM150	BSC NURSING (General)	8	NA
LM152	BSC NURSING (Mental Health)	11	
LM154	BSC NURSING (Intellectual Disability)	7	
LM156	BSC MIDWIFERY	4	

**Guideline only. These figures may differ slightly for 2024 as they are calculated from the total number of places available on a programme in any year. However, not all mature student places may be filled, as it depends on the number and quality of applications received in any year.*

2024 Entry

Application Assessment Criteria

- Prior Education
- Relevant work/ voluntary experience
- Health Fitness/Sport related awards
- Personal statement outlining why you want to take the course and how you intend to use it
- Overall application quality

- Mature applicants must apply to the Nursing and Midwifery Board Ireland (NMBI), in order to register to sit a written assessment test. Please refer to the link below for dates.

Further information is available from:

www.nmbi.ie/Careers-in-Nursing-Midwifery/Howto-Apply/Mature-Applicants

Interview Assessment Criteria

- Knowledge/ understanding of course content and commitment required
- Personal knowledge and experience
- Relevant life / work experience
- Relevant life / work / professional competencies

No interview. Places awarded on basis of assessment test performance only.

Science & Engineering

Code	Programme / Group Of Programmes	Reserved Mature Student Places 2024*	Minimum Entry and/or Application Requirements
LM058	BSC FINANCIAL MATHEMATICS	5	<p>HB3 (H3) in Leaving Cert Maths or equivalent</p> <p>or</p> <p>Distinction in QQI Maths for STEM (5S2246/5N0556)</p> <p>or</p> <p>Pass in UL Special Maths exam</p> <p>Submission of tailored Personal Statement for LM058 with CAO application.</p>
LM063	BSC TECHNOLOGY MANAGEMENT	5	<p>OB3 (O3/H7) in Leaving Certificate Maths or equivalent</p> <p>Submission of tailored Personal Statement for LM063 with CAO application.</p>

**Guideline only. These figures may differ slightly for 2024 as they are calculated from the total number of places available on a programme in any year. However, not all mature student places may be filled, as it depends on the number and quality of applications received in any year.*

2024 Entry

Application Assessment Criteria

- Demonstrated mathematical ability
- Prior education
- Relevant work experience
- Personal statement
- Interest in programme

Interview Assessment Criteria

In rare cases, an informal interview may be scheduled to clarify questions arising from the application material.

- Prior education - *key subject performance (business, engineering, technology / construction) with a proven ability to engage and deliver*
- Other courses completed
- Interest in programme - evidence of understanding what the programme involves
- Personal statement - clearly show a desire to return to education
- Work / voluntary experience - candidate to show a proven ability to be motivated to work. Relevant experience to be highlighted, transferable skills to be noted

- Preparedness for third-level, particularly the pace at which difficult material is covered
- Relevant knowledge and experience
- Communication skills

Science & Engineering

Code	Programme / Group Of Programmes	Reserved Mature Student Places 2024*	Minimum Entry and/or Application Requirements
LM082	BSC CONSTRUCTION MANAGEMENT & ENGINEERING	9	Submission of tailored Personal Statement for LM082 with CAO application. Students progressing directly from the Mature Student Access Certificate should submit a personal statement.
LM068	BSC FOOD SCIENCE & HEALTH	9	Submission of tailored Personal Statement for LM068 with CAO application.

**Guideline only. These figures may differ slightly for 2024 as they are calculated from the total number of places available on a programme in any year. However, not all mature student places may be filled, as it depends on the number and quality of applications received in any year.*

2024 Entry

Application Assessment Criteria

- Prior education – key subject performance (business, engineering, technology / construction) with a proven ability to engage and deliver
- Other courses completed
- Interest in programme – evidence of understanding what the programme involves
- Evidence of desire to do this course
- Work / voluntary experience - candidate to show a proven ability to be motivated to work. Relevant experience to be highlighted, transferable skills to be noted

- Application form and personal statement
- Evidence of sufficient ability in science and maths to complete programme successfully
- Other courses completed and work experience

Interview Assessment Criteria

- Preparedness for third-level, particularly the pace at which difficult material is covered
- Relevant knowledge and experience
- Communication skills

Places normally awarded on basis of application alone. An interview may be requested if deemed helpful to the assessment of the application. Within this, motivation for application, relevant academic and work experience, preparedness for third- level education and communication skills will be assessed.

Science & Engineering

Code	Programme / Group Of Programmes	Reserved Mature Student Places 2024*	Minimum Entry and/or Application Requirements
LM076	BSC PRODUCT DESIGN & TECHNOLOGY	8	Tailored Personal Statement for LM076 with CAO application

**Guideline only. These figures may differ slightly for 2024 as they are calculated from the total number of places available on a programme in any year. However, not all mature student places may be filled, as it depends on the number and quality of applications received in any year.*

2024 Entry

Application Assessment Criteria

- Demonstrable interest in programme
- Understanding of design as a career
- Prior education and learning e.g. educational qualifications, IT skills, transferable skills etc.
- Evidence of desire to do the course

Interview Assessment Criteria

- Demonstrate an understanding of the course
- Evidence of creative thinking and problem-solving ability
- Relevant knowledge and experience
- Preparedness for third level
- Communication skills
- Supporting work that demonstrates creative and/ or problem solving ability (e.g. sketches, designed objects, etc.)

Science & Engineering

Code	Programme / Group Of Programmes	Reserved Mature Student Places 2024*	Minimum Entry and/or Application Requirements
LM077	BE AERONAUTICAL ENGINEERING	5	HC2 (H4) in Leaving Certificate Maths or equivalent
LM115	BE CHEMICAL & BIOCHEMICAL ENGINEERING	4	or
LM116	BE ENGINEERING <i>Common entry with choice (subject to restriction) to pursue defined Degree Options in any of the following:</i> <ul style="list-style-type: none"> • Biomedical Engineering • Mechanical Engineering • Civil Engineering • Design and Manufacture • Digital Mechatronic Engineering 	32	Merit in QQI Maths for STEM (5S2246/5N0556) or Pass in UL Special Maths exam
LM118	BE/ME ELECTRONIC & COMPUTER ENGINEERING	8	(1) HC2 (H4) in Leaving Certificate Maths (or equivalent) or (2) Merit in QQI Maths for STEM (5S2246/5N0556) or (3) Pass in the UL Special Mathematics Entrance Examination or (4) demonstrable evidence in mathematical competencies at a suitable level.
LM093	BSC EQUINE SCIENCE	4	HC2 (H4) in two Leaving Certificate subjects at least one of which must be classified as a science subject

*Guideline only. These figures may differ slightly for 2024 as they are calculated from the total number of places available on a programme in any year. However, not all mature student places may be filled, as it depends on the number and quality of applications received in any year.

2024 Entry

Application Assessment Criteria

Interview Assessment Criteria

- Prior education – key subject performance (business, engineering, technology / construction) with a proven ability to engage and deliver
- Other courses completed
- Interest in programme – evidence of understanding what the programme involves
- Personal statement – clearly show a desire to return to education
- Work / voluntary experience – candidate to show a proven ability to be motivated to work. Relevant experience to be highlighted, transferable skills to be noted

- Prior education – relevant subjects and achievements. Other programmes of study completed (outside core electronic and computer engineering subjects).
- Interest in the programme.
- Personal statement.
- Relevant work and any voluntary experience.

- Relevant work experience
- Other courses completed
- Evidence of desire to do this course

- Preparedness for third-level, particularly the pace at which difficult material is covered
- Relevant knowledge and experience
- Communication skills
- Understanding of programme

Places are normally awarded through an assessment of the application. An interview may be requested if considered helpful to clarify specific information provided in the application or to discuss further aspects that were not included in the application.

- Preparedness for third-level, particularly the pace at which difficult material is covered
- Relevant knowledge and work experience
- Communication skills
- Understanding of the programme

Places normally awarded on basis of application. An interview may be requested if deemed helpful to the assessment of the application.

Science & Engineering

Code	Programme / Group Of Programmes	Reserved Mature Student Places 2024*	Minimum Entry and/or Application Requirements
LM180	CERT/DIPLOMA EQUINE SCIENCE	1	Submission of tailored Personal Statement for LM093 with CAO application.
LM099	BARCH ARCHITECTURE	5	Submission of tailored Personal Statement for LM099 with CAO application.
LM121	BSC COMPUTER SCIENCE Common entry with choice to pursue defined Degree Options in any of the following: <ul style="list-style-type: none"> • Computer Systems • Computer Games Development • Mobile Communications and Security 	17	Evidence or certification from an appropriate online programming course such as those provided by Coursera or Udacity, etc OR QQI level 5 or 6 qualification in one of the following domains: <i>Web/Internet, Software, Programming, with a minimum of a Distinction grade in the programming components</i>

*Guideline only. These figures may differ slightly for 2024 as they are calculated from the total number of places available on a programme in any year. However, not all mature student places may be filled, as it depends on the number and quality of applications received in any year.

2024 Entry

Application Assessment Criteria

Interview Assessment Criteria

- Evidence of experience studying science
- Relevant work experience
- Other courses completed
- Evidence of desire to do this course

Places normally awarded on basis of application. An interview may be requested if deemed helpful to the assessment of the application.

- Personal information and background
- Knowledge of the programme & architecture-related careers
- Relevant life / work experience
- Transferable skills
- Preparedness for course demands
- Ability to cope with academic workload

Mature applicants are required to attend for interview and to bring material to support their application to that interview

- Programming portfolio - *related to programming course undertaken*
- Mathematical competency
- Prior education
- Work / voluntary experience
- Personal statement
- Other courses completed
- Interest in programme

- Discussion of programming portfolio (related to programming course undertaken)
- Ability to cope with mathematical concepts
- Preparedness for third-level and associated workload
- Personal information and background
- Knowledge of the programme & related careers
- Relevant life / work experience

Code	Programme / Group Of Programmes	Reserved Mature Student Places 2024*	Minimum Entry and/or Application Requirements
LM122	BSC CREATIVE MEDIA & INTERACTION DESIGN <i>Common Entry with choice (subject to restriction) to pursue defined Degree Options in any of the following:</i> <ul style="list-style-type: none"> • Digital Media Design • Music, Media & Performance Technology 	5	N/A

2024 Entry

Application Assessment Criteria

- Prior education
- Other courses completed
- Relevant work / voluntary experience
- Personal statement
- Understanding of and interest in programme & career plans
- Overall application quality

Interview Assessment Criteria

- Personal information and background
- Good understanding of the programme and of potential future careers
- Relevant life / work experience
- Transferable skills
- Preparedness for third-level

Science & Engineering

Code	Programme / Group Of Programmes	Reserved Mature Student Places 2024*	Minimum Entry and/or Application Requirements
LM123	<p>BSC BIOLOGICAL & CHEMICAL SCIENCES</p> <p>Common entry with choice (subject to restriction) to pursue defined Degree Options in any of the following:</p> <ul style="list-style-type: none"> • Pharmaceutical and Industrial Chemistry • Industrial Biochemistry • Environmental Science • Bioscience 	24	<p>HC2 (H4) in Leaving Cert Maths or equivalent or Merit in QQI Maths for STEM (5S2246/5N0556) and HD3 / OD3 (O6/ H7) in either Physics, Chemistry, Physics with Chemistry, Engineering, Agricultural Science or Biology</p> <p>OR</p> <p>OB3 (O3/H7) in Leaving Cert Maths or equivalent</p> <p>or Pass in QQI Maths for STEM (5S2246/5N0556) with HC2 (H4) in one of the following: Applied Maths, Physics, Chemistry, Physics with Chemistry, Biology or Agricultural Science</p> <p>OR</p> <p>The applicant must have significant work experience (number of years) in an industry of direct correlation with Pharmaceutical and Industrial Chemistry or equivalent</p> <p>OR</p> <p>The applicant has carried out post second level courses, training or part completion of a previous degree that would be deemed equivalent of the entry requirements outlined above</p>

**Guideline only. These figures may differ slightly for 2024 as they are calculated from the total number of places available on a programme in any year. However, not all mature student places may be filled, as it depends on the number and quality of applications received in any year.*

2024 Entry

Application Assessment Criteria

It must be clear from the application form and personal statement that the applicant has a real interest in the course and has demonstrable background in a chemistry related field either through study or work experience.

Students should include their area of interest and specific reasons for their interest as part of their personal statement.

Interview Assessment Criteria

- Interest in programme
- Aptitude for programme
- Numerical skills

Science & Engineering

Code	Programme / Group Of Programmes	Reserved Mature Student Places 2024*	Minimum Entry and/or Application Requirements
LM124	<p>BSC MATHEMATICS Common entry with choice to pursue defined Degree Options in any of the following:</p> <ul style="list-style-type: none"> • Mathematical Sciences • Mathematics & Physics • Economics & Mathematics 	6	<p>HB3 (H3) in Leaving Certificate Maths or equivalent or Distinction in QQI Maths for STEM (5S2246/5N0556) or Pass in UL Special Maths exam</p>
LM125	<p>BSC PHYSICS Common entry with choice to pursue defined Degree Options in any of the following:</p> <ul style="list-style-type: none"> • Applied Physics • Mathematics & Physics 	3	<p>HC2 (H4) in Leaving Certificate Maths or equivalent or Merit in QQI Maths for STEM (5S2246/5N0556) or Pass in UL Special Maths exam AND HC2 (H4) in Leaving Certificate in any one of the following: Physics, Physics with Chemistry, Engineering, Applied Mathematics or equivalent</p>

*Guideline only. These figures may differ slightly for 2024 as they are calculated from the total number of places available on a programme in any year. However, not all mature student places may be filled, as it depends on the number and quality of applications received in any year.

2024 Entry

Application Assessment Criteria

Interview Assessment Criteria

- Demonstrated mathematical ability
- Prior education
- Relevant work experience
- Personal statement
- Interest in programme

Places normally awarded on basis of application alone. An interview may be requested if deemed helpful to the assessment of the application.

- Demonstrated mathematics and physics ability
- Prior education
- Relevant work experience
- Personal statement
- Interest in programme

Places normally awarded on basis of application alone. An interview may be requested if deemed helpful to the assessment of the application.

Science & Engineering

Code	Programme / Group Of Programmes	Reserved Mature Student Places 2024*	Minimum Entry and/or Application Requirements
LM173	INTEGRATED BSC/MSC IMMERSIVE SOFTWARE ENGINEERING (ISE)	4	<p>H4 or equivalent in the Special Mathematics Examination offered at UL</p> <p>or</p> <p>Merit in QQI Maths for STEM (5S2246/5N0556)</p> <p>Portfolio submission</p> <p>Submission of a Written Statement</p>

**Guideline only. These figures may differ slightly for 2024 as they are calculated from the total number of places available on a programme in any year. However, not all mature student places may be filled, as it depends on the number and quality of applications received in any year.*

2023 Entry

Application Assessment Criteria

Portfolio Assessment Criteria

- Creativity from any domain
- Supporting documentation should describe the path from concept to design to construction including critic of the work

Written Statement

- Illustrate potential to be successful and thrive in this course
- The non-negotiables for the course are: curiosity, an open mind to technology, innovation, entrepreneurship, organisation and communication
- Working in teams to solve real relevant problems

Interview Assessment Criteria

Interviews may be conducted if deemed helpful to the assessment of the application.

Arts, Humanities & Social Sciences

Code	Programme / Group Of Programmes	Reserved Mature Student Places 2024*	Minimum Entry and/or Application Requirements
LM002	ARTS	68	Applicants who wish to study a language must hold a minimum HC2 (H4) Leaving Certificate or equivalent in that language, unless taking beginners German or Spanish.
LM019	BSC SOCIAL SCIENCES	6	N/A
LM028	BA CRIMINAL JUSTICE	10	Submission of tailored Personal Statement for LM028 / LM029 with CAO application
LM029	LLB LAW PLUS	8	
LM039	BA JOURNALISM AND DIGITAL COMMUNICATION	4	N/A

**Guideline only. These figures may differ slightly for 2024 as they are calculated from the total number of places available on a programme in any year. However, not all mature student places may be filled, as it depends on the number and quality of applications received in any year.*

2024 Entry

Application Assessment Criteria

Interview Assessment Criteria

- Personal statement
- Interest in programme

- Prior education
- Work experience
- Evidence of interest
- General suitability

- Personal statement
- Interest in programme

- Prior education
- Work experience
- Evidence of interest
- General suitability

- Prior Education
- Work / voluntary experience
- Evidence of interest in the programme
- General suitability
- IT skills

- Prior education
- Work / voluntary experience
- Evidence of interest
- General suitability

- Prior education
- Application form
- Personal statement
- Relevant work experience

- Prior education
- Work experience / journalism
- Evidence of interest
- General suitability

Arts, Humanities & Social Sciences

Code	Programme / Group Of Programmes	Reserved Mature Student Places 2024*	Minimum Entry and/or Application Requirements
LM040	BA EUROPEAN STUDIES	3	Applicants who wish to study a language must hold a minimum HB3 (H3) Leaving Certificate or equivalent in that language, unless taking beginners German or Spanish.
LM044	BA APPLIED LANGUAGES	7	Evidence of sufficient ability to study languages successfully at university level (e.g. HB3 (H3) Leaving Certificate in relevant language or recognised equivalent) Prior language study, overseas experience, language courses taken.

**Guideline only. These figures may differ slightly for 2024 as they are calculated from the total number of places available on a programme in any year. However, not all mature student places may be filled, as it depends on the number and quality of applications received in any year.*

2024 Entry

Application Assessment Criteria

- Relevant prior education
- Relevant work / voluntary experience
- Personal statement, including an outline of interests in the core themes of the programme
- Evidence of language skills, such as language courses completed, or experience living in a target language country
- Other courses completed
- Interest in programme

- Prior education
- Work, voluntary experience
- Personal statement, including evidence of applicant's interests in the culture, society and literature of the target language chosen
- Foreign language courses completed, or experience living in a target language country
- Ability to speak and understand the language the applicant wishes to take at advanced level
- Other relevant courses completed
- Experience living outside his / her home country
- Motivation

Interview Assessment Criteria

- Personal information and background
- Motivation for undertaking the programme
- Knowledge of the programme and possible related careers
- Relevant life / work experience
- Ability to engage with 3rd level learning styles and approaches
- Communication skills
- Awareness of European issues

- Ability to speak and understand the language the applicant wishes to take at advanced level
- Other relevant courses completed
- Experience living outside his / her home country
- Motivation
- Willingness to engage with the course, including the compulsory aspect of Erasmus exchange programme
- Assessment of applicant's knowledge of the society and culture of the target language

Kemmy Business School

Code	Programme / Group Of Programmes	Reserved Mature Student Places 2024*	Minimum Entry and/or Application Requirements
LM020	BA LAW & ACCOUNTING	11	Submission of tailored Personal Statement for LM020 / LM056 with CAO application
LM056	BA INTERNATIONAL BUSINESS	8	
LM050	BACHELOR OF BUSINESS STUDIES <i>(including Business Studies with French or German or Japanese)</i>	61	Submission of tailored Personal Statement for LM050 with CAO application AND For Business Studies with a language: High level of proficiency in French (HC2 (H4) Leaving Cert or recognised equivalent) OR High level of proficiency in German (HC2 (H4) Leaving Cert or recognised equivalent) OR High level of proficiency in a language other than English (HC2 (H4) Leaving Cert or recognised equivalent)

*Guideline only. These figures may differ slightly for 2024 as they are calculated from the total number of places available on a programme in any year. However, not all mature student places may be filled, as it depends on the number and quality of applications received in any year.

2024 Entry

Application Assessment Criteria

- Recognised prior learning - educational qualifications (LC, relevant QQI/HETAC qualifications), IT skills, other qualifications
- Personal statement - should demonstrate an understanding of the nature of the programme to which you are applying
- Relevant work experience (voluntary or paid)
- Aptitude for numeracy
- Overall application quality

Interview Assessment Criteria

- Personal information and educational background
- Relevant knowledge and experience
- Knowledge of programme
- Preparedness for third level and ability to cope with academic workload
- Communication skills

Irish World Academy of Music + Dance

Code	Programme / Group Of Programmes	Reserved Mature Student Places 2024*	Minimum Entry and/or Application Requirements
LM131	BACHELOR OF ARTS IN IRISH MUSIC	No Limit	<p>Knowledge and skill in Irish Traditional music. Formal education not necessary, but some experience of performing is needed. All students must undergo a Garda Vetting process</p> <p>Students can also join second year of this course following the Certificate in Music and Dance.</p> <p>For details of QQI requirement please check the QQI Booklet. All students must undergo Garda Vetting.</p>
LM132	BACHELOR OF ARTS IN IRISH DANCE	No Limit	<p>Knowledge and skill in Irish dance. Formal education not necessary, but some experience of performing is needed. All EU/ Irish residential applicants must apply through the CAO.</p> <p>Students can also join second year of this course following the Certificate in Music and Dance.</p> <p>For details of QQI requirement please check the QQI Booklet. All students must undergo Garda Vetting.</p>

**Guideline only. These figures may differ slightly for 2024 as they are calculated from the total number of places available on a programme in any year. However, not all mature student places may be filled, as it depends on the number and quality of applications received in any year.*

2024 Entry

Application Assessment Criteria

Interview Assessment Criteria

Personal statement and Interview/
Audition required.

- Auditions can be held in person or online upon request.
- Applicants will be asked to prepare three sets of tunes / pieces (at least one set needs to be a set of reels) or, if they are traditional singers, three songs.
- A short interview will follow.

Further information can be found on www.irishworldacademy.ie/undergraduate/ba-irish-music/.

Personal statement and Interview/
Audition required.

- Students must perform three dances on video or in person.
- We require our traditional dancers to perform either:
- Competitive style: 3 pieces, one hard-shoe, one soft-shoe and one of own choice in any style
- **or**
- Sean-nós: 3 pieces – one reel time percussive piece, one percussive piece in another rhythm, one of own choice in any style.
- A short interview will follow.

Further information can be found on www.irishworldacademy.ie/undergraduate/ba-irish-dance/.

Irish World Academy of Music + Dance

Code	Programme / Group Of Programmes	Reserved Mature Student Places 2024*	Minimum Entry and/or Application Requirements
LM133	BACHELOR OF ARTS IN CONTEMPORARY DANCE	No Limit	<p>Knowledge and skill in dance. Formal education not necessary, but some experience of performing is needed. All EU/ Irish residential applicants must apply through the CAO.</p> <p>Students can also join second year of this course following the Certificate in Music and Dance.</p> <p>For details of QQI requirement please check the QQI Booklet. All students must undergo Garda Vetting.</p>
LM134	BACHELOR OF ARTS IN VOICE	No Limit	<p>Knowledge and skill in vocal performance. Formal education not necessary, but some experience of performing is needed.</p> <p>Students can also join second year of this course following the Certificate in Music and Dance.</p> <p>For details of QQI requirement please check the QQI Booklet. All students must undergo Garda Vetting.</p>

**Guideline only. These figures may differ slightly for 2024 as they are calculated from the total number of places available on a programme in any year. However, not all mature student places may be filled, as it depends on the number and quality of applications received in any year.*

2024 Entry

Application Assessment Criteria

Interview Assessment Criteria

Personal statement and Interview/
Audition required.

- Submit a solo performance video. A maximum of three-minute dance solo in any movement style/genre. E.g. ballet, hip-hop, contemporary.
- Dance technique level.
- Ability to execute the choreography performed in solo.
- Performance quality (Focus and intention to detail of movement).
- Musicality
- A short interview will follow.

Further information can be found on www.irishworldacademy.ie/undergraduate/ba-contemporary-dance/.

Personal statement and Interview/
Audition required.

- Perform two contrasting songs.
- Songs may be in any style/genre.
- Accompaniment: applicants may use backing tracks, self-accompany, bring an accompanist, or sing without accompaniment.
- The performance will be assessed on technical skill, vocal ability and overall performance.
- For online submissions, a video can be submitted.
- A short interview will follow.

Further information can be found on www.irishworldacademy.ie/undergraduate/ba-voice/.

Irish World Academy of Music + Dance

Code	Programme / Group Of Programmes	Reserved Mature Student Places 2024*	Minimum Entry and/or Application Requirements
LM135	BACHELOR OF ARTS IN WORLD MUSIC	No Limit	<p>Knowledge and skill in musical performance. Formal education not necessary, but some experience of performing is needed. All EU/ Irish residential applicants must apply through the CAO.</p> <p>Students can also join second year of this course following the Certificate in Music and Dance.</p> <p>For details of QQI requirement please check the QQI Booklet. All students must undergo Garda Vetting.</p>
	CERTIFICATE IN MUSIC AND DANCE	No Limit	<p>Those applying to study on the Certificate in Music and Dance must do so directly to the University, not through the CAO.</p> <p>Contact admissions (admissions@ul.ie).</p>

**Guideline only. These figures may differ slightly for 2024 as they are calculated from the total number of places available on a programme in any year. However, not all mature student places may be filled, as it depends on the number and quality of applications received in any year.*

2024 Entry

Application Assessment Criteria

Interview Assessment Criteria

Personal statement and Interview/
Audition required.

- Play / sing two pieces of your own choosing in any style or genre
- Online applicants will be invited to submit a video recording of their performance of two songs and attend a remote interview.
- Performances are assessed based on proficiency on instrument, musicality, performance quality and creativity and motivation.
- Your performance will be assessed by a panel and a short interview will follow.

Further information can be found on www.irishworldacademy.ie/undergraduate/ba-world-music/.

Music and / or dance experience in at least one area is required.



- An interview/audition is arranged for each applicant. This must be passed to gain entry onto the course.

Further information can be found on www.irishworldacademy.ie/undergraduate/certificate-in-music-and-dance/.



Learning + Support Services in UL

There is a very comprehensive range of learning support and other services in UL, which are available to all students. The following is not a comprehensive list of supports and services, but rather highlights those which might be of most interest and relevance to mature students. Further information on each support service can be obtained from the websites listed below or by contacting the service directly using the email address provided.



Student Affairs Division

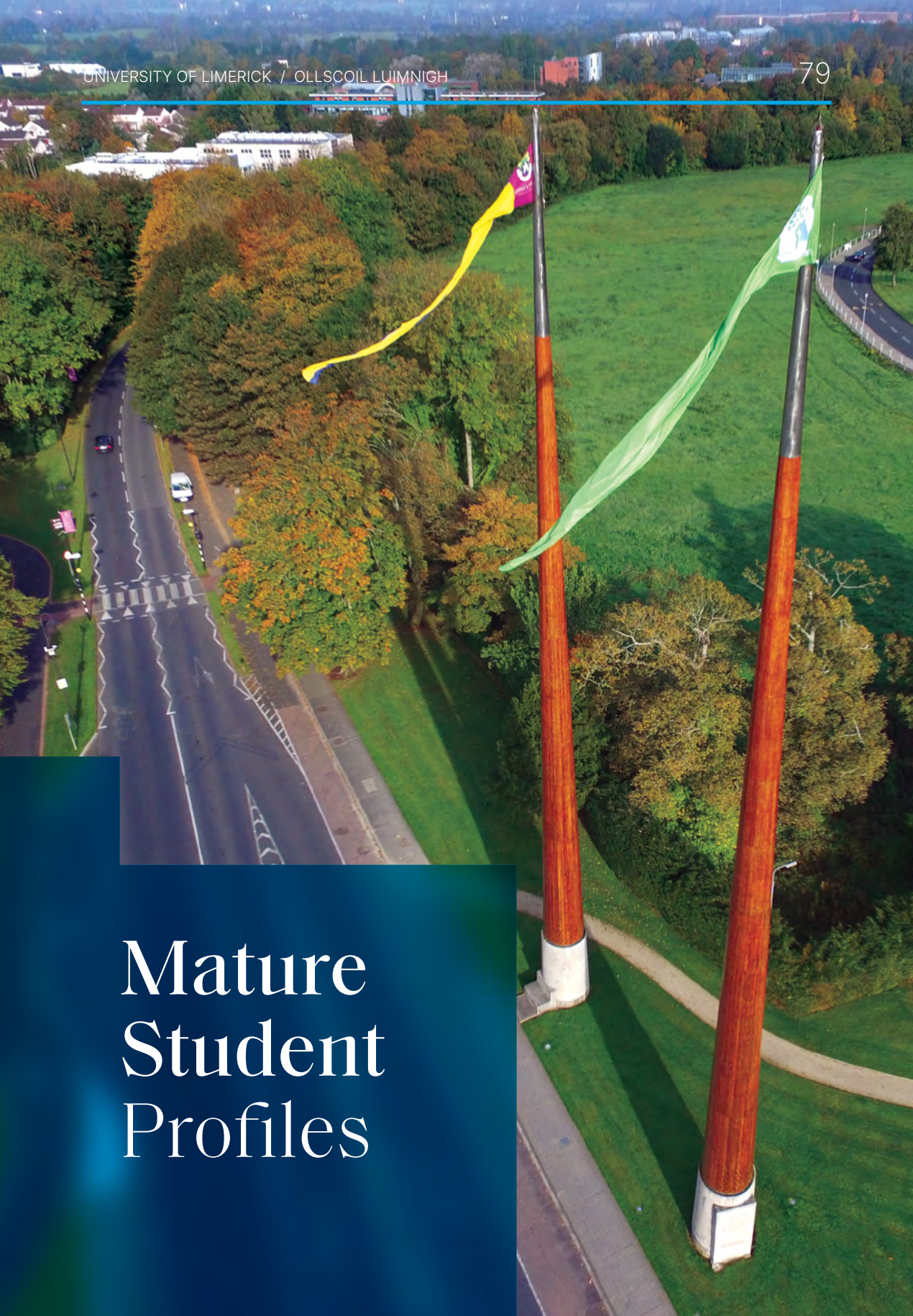
		
ACCESSCAMPUS	donal.oleary@ul.ie	www.ul.ie/studentaffairs/accesscampus
ACCESS OFFICE	access@ul.ie	www.ul.ie/access
ARTS OFFICE	patricia.moriarty@ul.ie	www.ul.ie/artsoffice
CHAPLAINCY	John.campion@ul.ie / sarah.orourke@ul.ie	www.ul.ie/chaplain
COMMUNITY LIAISON OFFICE / PRESIDENT'S VOLUNTEER AWARD	pva@ul.ie	www.studentvolunteer.ie/UL
DISABILITY SUPPORT SERVICES	disabilityservices@ul.ie	www.ul.ie/disabilityservices
ÉIST STUDENT COUNSELLING AND WELLBEING	counselling@ul.ie	www.ul.ie/counselling
FIRST YEAR SUPPORT CO-ORDINATOR	firstyearsupport@ul.ie	www.ulsites.ul.ie/studentaffairs/1st-year-experience
MATURE STUDENT OFFICE	mso@ul.ie	www.ul.ie/mso
STUDENT HEALTH CENTRE	Ria.toland@ul.ie	www.ul.ie/medical

Centre For Teaching And Learning - Learning Support Centres & Initiatives

		
CENTRE FOR TEACHING AND LEARNING	ctl@ul.ie	www.ul.ie/ctl
FIRST SEVEN WEEKS		www.ul.ie/ctl/students/first-seven-weeks
ICT LEARNING CENTRE	Clem.odonnell@ul.ie	www.ul.ie/ictlc
LANGUAGE CENTRE	Language.centre@ul.ie	www.ul.ie/languagecentre
MATHEMATICS LEARNING CENTRE	Richard.walsh@ul.ie	www.ulsites.ul.ie/mlc/
REGIONAL PEER SUPPORTED LEARNING CENTRE	James.murphy@ul.ie	www.pslc.ul.ie/pslc/
REGIONAL WRITING CENTRE	writingcentre@ul.ie	www.ul.ie/rwc
SCIENCE LEARNING CENTRE	Claire.obrien@ul.ie / slc@ul.ie	www.ul.ie/~slc
STUDENT ENGAGEMENT AND SUCCESS UNIT	First Year Support Coordinator firstyearsupport@ul.ie First Year Librarian Jesse.waters@ul.ie Educational Developer sarah.gibbons@ul.ie	https://ulsites.ul.ie/ses/

Other Services

		
ACCOMMODATION OFFICE	accommodation@ul.ie	www.studentliving.ul.ie
GRADUATE AND PROFESSIONAL STUDIES	postgradadmissions@ul.ie gps@ul.ie (Professional / Flexible)	www.ul.ie/gps/
COOPERATIVE EDUCATION AND CAREERS DIVISION	careers@ul.ie	https://www.ul.ie/cecd/
FEES OFFICE	Student.fees.office@ul.ie	www.ulsites.ul.ie/finance/student-fees
SILVER APPLES CRECHE	silverapplescreche@ul.ie	
ACADEMIC REGISTRY		www.ul.ie/academic-registry/
STUDENT LIFE (STUDENTS' UNION)	studentcentre@ul.ie Student Information and Support Coordinator jenny.blake@ul.ie	www.ulstudentlife.ie



Mature Student Profiles

Tracey Keogh

PhD in Psychological Research

Having children at a young age can bring many challenges and requires many sacrifices. One of which was to postpone my desire to progress to 3rd level education. I have always believed that the best lesson I could teach my children would come through leading by example.



So, when my children became teenagers where they themselves were considering what next in terms of their education, I decided to take the leap and return to education myself. I knew I wanted to apply for a BSc in psychology but being out of education for many years meant that I needed to upskill in order for this to happen. So, I completed a general studies course and a FETAC level 5 in 2014 and nervously made an application through the CAO system.

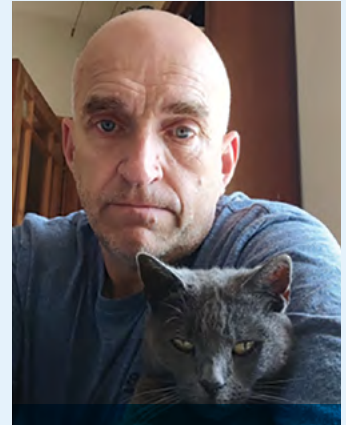
I remember receiving my place on the course as though it were yesterday. It truly was one of the best days of my life. I promised myself that I would make the most of the university experience. I truly can't believe that I continue to hold true to that promise. As an undergraduate student, I applied through the mature student office for a national scholarship to spend the summer of 2017 teaching in Vietnam. Through the amazing support of the staff in the office, I won the award and was immersed in a truly amazing cultural experience. I had the academic bug at that point and decided to progress to PhD in 2018. As I write this, I am currently on a 2-week research trip to Baylor University in Texas, after spending a week in California where I presented the findings of my 3rd PhD study at a conference. These opportunities arose from being a student in UL.

My advice to those considering taking the leap is go for it. It is hands down one of the best decisions I have made. It can have its challenges but don't allow fear to deter you from following your dreams. It is normal to feel anxious about the unknown. but there are so many supports in UL, with the best starting point being the Mature Student Office.

Tony Cleary

Sport and Exercise Sciences

I left school with nothing at 16, worked in an array of different jobs until my passion for golf became a quest to become my career also. Life stepped in to firmly put that on the back burner. Married with two children (whom are both in UL as I write this) I became my fathers-in-law carer for what turned out to be 13 years.



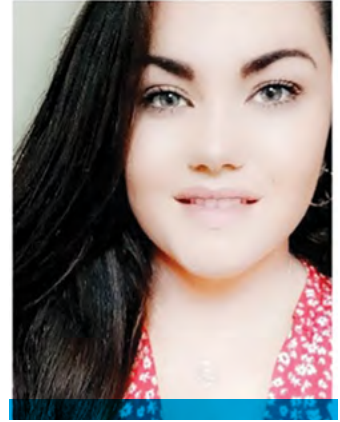
At 50 I decided it was time to re-ignite my passion to be a professional golfer. Physicality stepped into the breach this time. An unexpected hip replacement. Feeling 20 years younger after the operation and with no real work plan, I decided that education was my calling. It was an interest in my sport and the physical turmoil that I had been through, that gave me the idea that I could improve myself with knowledge. So, with a slew of standard minimum wage jobs under my belt and before me in my immediate future, I decided that the university life and a degree was the next step. I applied for a psychiatric nursing course, I panicked then I missed the entrance exam. This I took as a sign to get back on track with my passion, so I looked again and decided to get back on track, therefore the Sports and exercise science degree course was the only option. With this course I had to complete the Mature Students Admissions Pathway (MSAP) test. Daunting, but I passed and got a place.

It would have made my first two years so much easier if I had completed an access course. I'm computer literate but it's the advanced usability of the office programs that you learn which saves the time and pain. The semantics and all the peripheral learning (referencing, library searching etc.) that I had to employ just to complete the modules, made the first year much harder than it should have been. Covid also didn't help, we were the most affected as we started on campus then go online. Having to learn all the new delivery methods and getting tech to behave was a nightmare at times. Managing my time was also very hard. I did not use many of the supports UL offers in first year much, I thought that they were not for the likes of me, how wrong was I, they are second to none and for everyone. I struggled with physics so availed of the science learning centre after classes, it made all the difference. It seems lame to say that being a part of UL is like a family, but like a family everyone is out to help you, and no-one gives their time to you like a family does. Everyone's life experiences and situations are different. You can guarantee that there is, or has been someone with your type of problem, and therefore a person or resource to help you find a solution. So far UL has been a privilege to be a part of and I cannot believe I will be going into my final year in 2024. The campus itself is a gift to walk around and relax in, so spend time being there and enjoy.

Amy Ryan

BSc Nursing (Mental Health)

I never thought I would be lucky enough to find myself studying mental health nursing. Previously, an education in a higher-level institute was not on the cards for me. I enjoyed the creative side of school growing up, the art classes, the music classes and singing. Academically, it was not me. However, when I became a mother at 24 (to the most beautiful boy), my perspective changed in life and I knew that in order to secure a brighter, better, and safer future, I needed to put my education first. I put that trust in the University of Limerick (UL).



I applied to UL through the Mature Student route as an applicant on the CAO. I undertook an aptitude test and my score qualified me a place on LM152, BSc Nursing (Mental Health). I cannot begin to describe the sense of pride and achievement I felt as I watched numerous offers come through my screen. This was a dream come true.

If finances are a worry for you, then hopefully I will ease this worry. The University of Limerick offers ample information on grants, funds and bursaries that are made available to you. I have personally benefitted from SUSI, The 1916 Bursary and the Student Assistance Fund. I am a single parent (Lone Parent) and without a doubt, the University of Limerick champions the student. Without this funding, my education would truly not be possible. I am forever grateful to the mature student office who have been extremely helpful and a great support network for mature students like me who can feel a little overwhelmed at times. I know that I will continuously avail of their assistance throughout my degree programme.

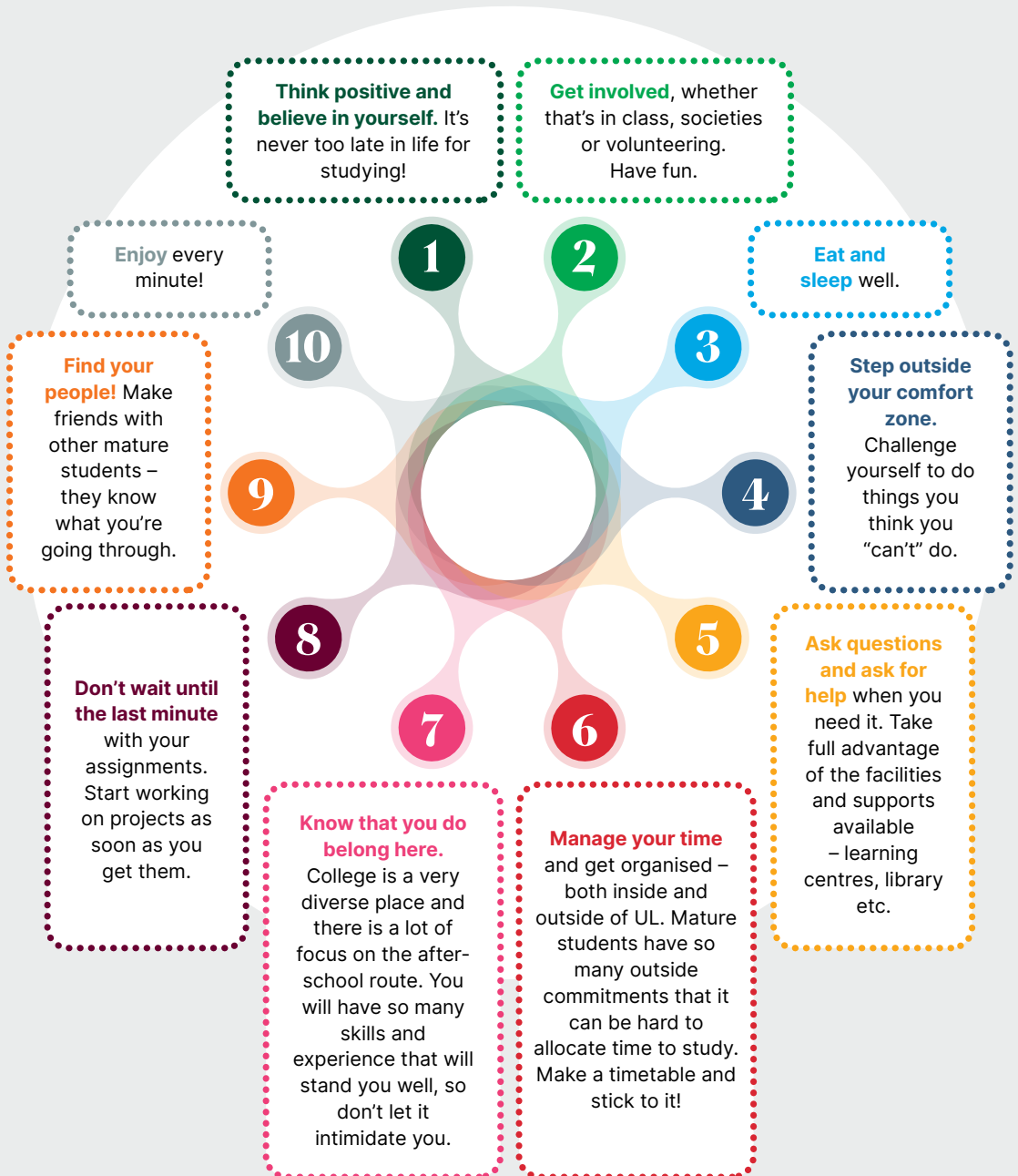
Within the University of Limerick, there are incredibly insightful lecturers that have an abundance of experience and knowledge. They are always willing to engage with their students and assist in any way they can. If you are willing to commit to your studies, then you will reap the rewards.

My advice, grab every educational opportunity with both hands and do not let go. Education is powerful.



supporting
access
to higher
education
for adults

Top Tips from UL Mature Students







Rannóg Ghnóthaí
Mac Léinn

Student Affairs
Division

Mature Student Office
Room EM019a
Main Building
University of Limerick
Limerick, Ireland



+353 61 202 735



mso@ul.ie



www.ul.ie/mso



@MSO_UL